



PROFESSIONAL MEAL SERVICE 2018/19



ecoecho®

OPPORTUNITY IS IN THE AIR

The take-away market is booming, as busy consumers increasingly get it to-go. You can take full advantage of this promising situation by serving delicious food served in top-quality, environmentally profiled packaging. Designed to create goodfoodmood, our collection gives you everything you need to do just that – in the form of convenient, stylish products made from feel-good eco-conscious materials.



Interested in an eco-friendly solution?
Go green with us and subscribe to our e-newsletter on [Duni.com](https://duni.com).



A PROVEN, PASSIONATE PARTNER

When you choose Duni, you get a partner you can depend on. You get our over 60 years' expertise in design and materials. And you get a rich selection of eco-conscious materials, which show we live the values behind our Blue Mission*. What's more, as we rigorously monitor and document the lifecycle of our products, you can always trust them to show you – and your business – in a positive light.



*To discover more about our Blue Mission, visit our Corporate Social Responsibility page at [Duni.com](https://www.duni.com)



ecoecho®

MINDFUL SOLUTIONS FOR EVERY NEED

From electric cars to sustainably designed packaging, the demand for eco-conscious solutions is irresistibly strong – and growing every day. The Duni ecoecho® range enables you to meet this need with top-quality, convenient take-away solutions for every need. These are made with the best mindful materials available, like bagasse. Ecoecho® materials that show the future is in our hands.



Interested in an eco-friendly solution? Go green with us and subscribe to our newsletter on [Duni.com](https://duni.com).

NEW

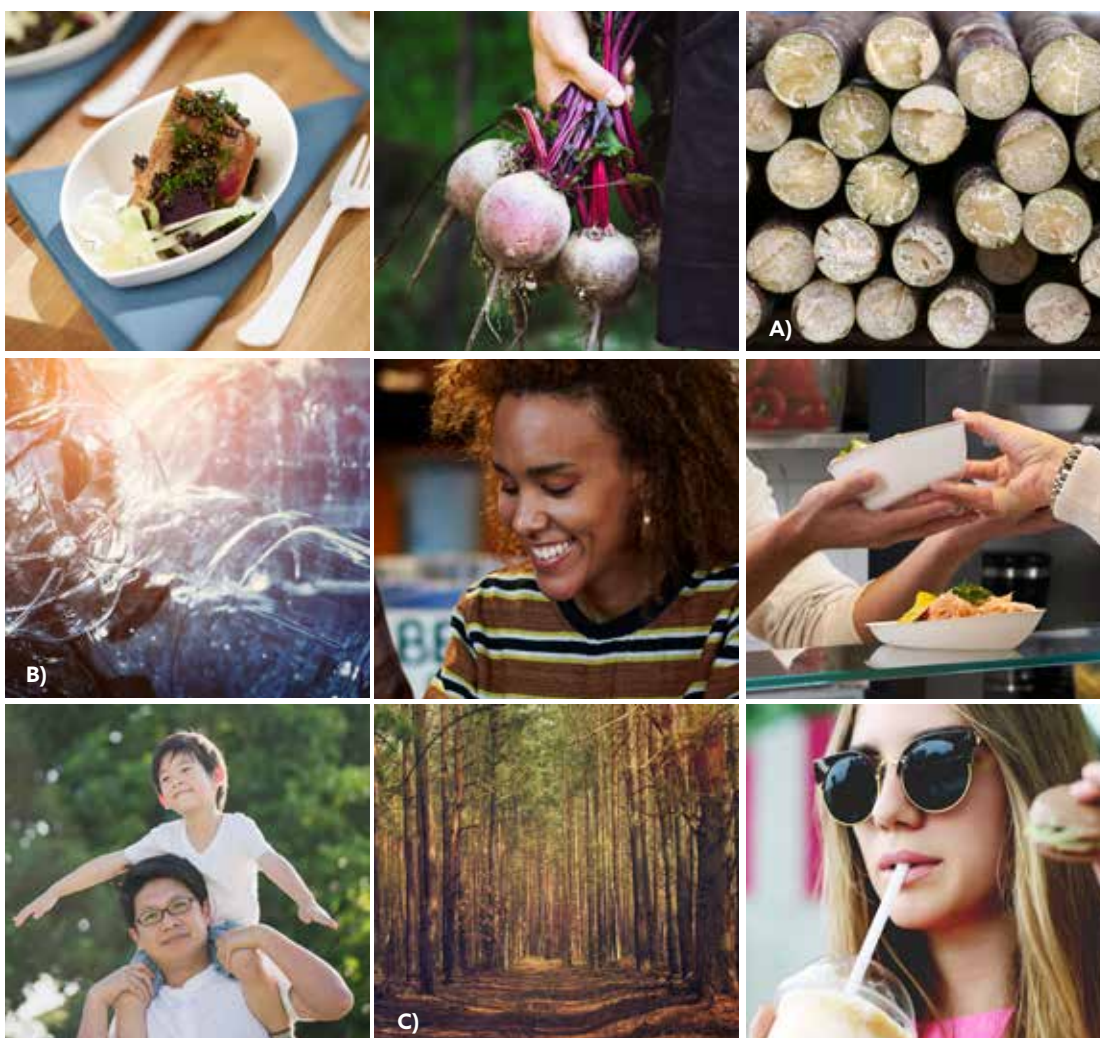
BAGASSE BOXES
SMALL DISHES



ecoecho®

MATERIALS THAT POINT TO A BRIGHTER FUTURE

At Duni we are committed to operating in the most accountable, resource-efficient way we can. For us, innovation, quality, safety and environmental standards go hand in hand. Reflecting this, we offer a market-leading selection of top-quality, eco-conscious materials. These enable you to maximise convenience, minimise environmental impact and deliver great customer experiences.



- A) Bagasse: A natural by-product of sugar production. Once composted, it turns to soil in just a few weeks.
- B) rPET: Up to 100% of the material in our rPET products comes from post-consumer recycled sources. All our rPET-products comply with the relevant food contact/safety regulations.
- C) Cardboard: The cardboard we use for our ecoecho® boxes is FSC® certified. It is made with wood that comes from FSC®-certified forests or from post-consumer waste.



NEW
AMAZONICA



ecoecho®

AMAZONICA CELEBRATE FOOD

Amazonica is an iconic collection crafted from mindful materials. It gives you infinite freedom to express your creativity, whenever you serve food. For the collection, Swedish design duo Bernadotte and Kylberg has translated the spirit of the Victoria Amazonica water lily into a family of timeless and playful napkins, bowls, plates and cutlery.

► **WATCH THE MOVIE** Check out the Amazonica movie at Duni.com



Bernadotte & Kylberg is a Swedish design duo that creates both industrial and graphic design with a focus on the end user. Their design philosophy is to create iconic and inspiring design that lasts. Since its foundation in 2012, Bernadotte & Kylberg has created designs for a range of leading brands, both domestic and international.



NEW
ECOECO®
VIKING BOXES



ecoecho®

ECO-CONSCIOUS PACKAGING IN ITS PUREST FORM

The modular Viking range meets the strong market demand for high-quality cardboard boxes with collapsible, flat-packed lids that stay securely shut and don't require folding. Crafted from 100% renewable resources, it offers a wide variety of easy-to-assemble and quick-to-fill options for just about any hot or cold foods. These are suitable for profile-printing, which we are happy to organize.



A) Viking boxes are constructed with tapered edges, which makes them – unusually for cardboard boxes – resistant to leaks.

B) Viking ecoecho® boxes are made from FSC®-certified cardboard and recyclable PLA lamination.

C) The lids conveniently flip open with no folding required.

The Viking concept suits different budgets. The boxes and lids are available in basic and ecoecho® versions. See the full concept on pages 39 and 41.



ecoecho®

THE ADVANTAGES ARE CLEAR

The desire for practical, eco-conscious take-away packaging keeps gathering steam. Modular ecoecho® Crystal glasses and bowls made from rPET* help you to meet it. Available in sizes for all needs, with matching lids, they not only accentuate the appeal of food and beverages; they are also extremely flexible. That way, they enable you to ensure a great customer experience, and minimise breakages and waste too.



*rPET: Up to 100% of the material in our rPET products comes from post-consumer recycled sources. All of our rPET-products comply with the relevant food contact/safety regulations.

NEW

APET OCTAVIEW®

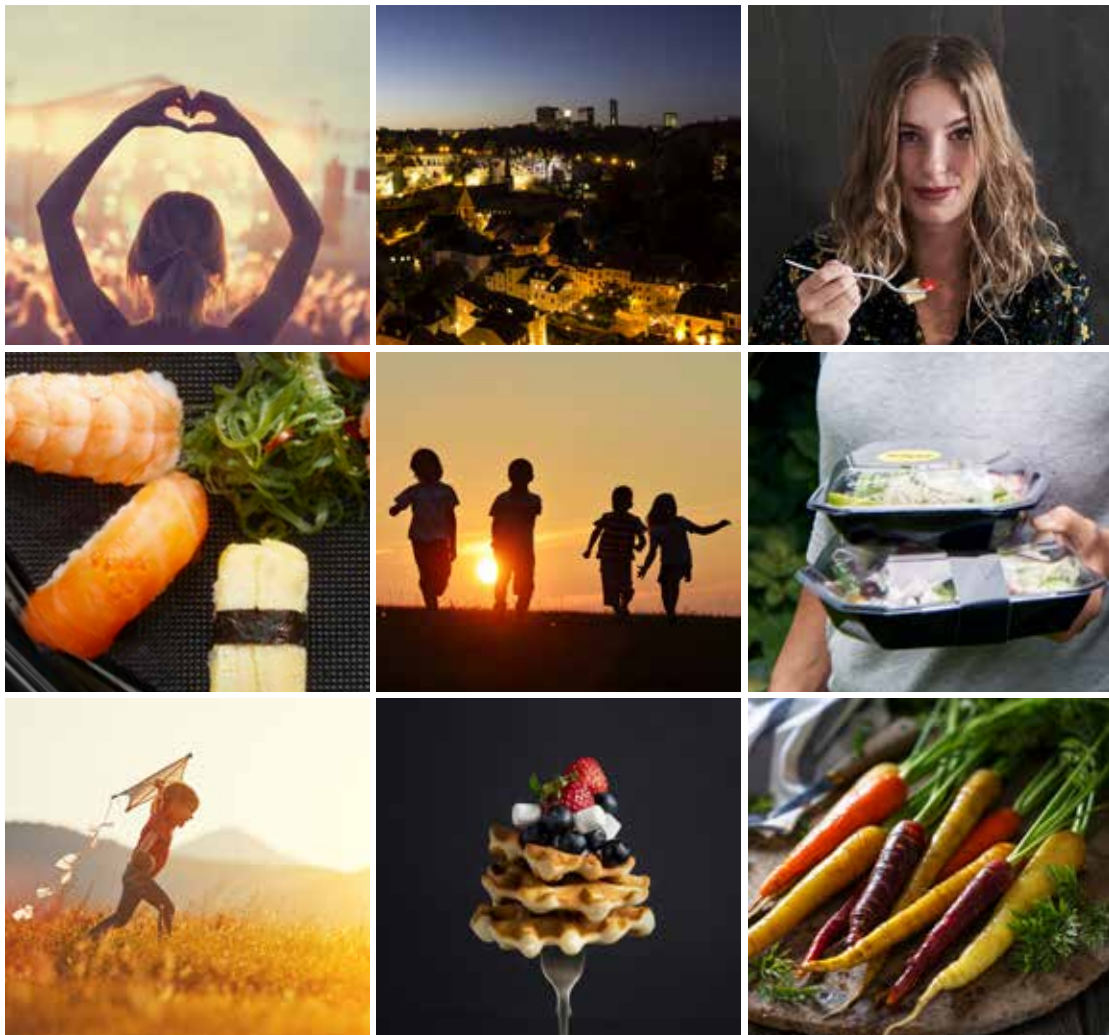


OCTAVIEW®

THE ULTIMATE STAGE FOR YOUR FOOD

New Octaview® take-away boxes, made from top-quality APET material, offer many subtle refinements, which take the original great design to another level. For instance, the new finessed look does more to accentuate the beauty of food. The new super-secure hinged lid closes with a haptic click, for a more satisfying user experience. Reworked tabs simplify carrying, closing and re-closing. In short, the best just got better.

► **WATCH THE MOVIE** Check out the Octaview® movie at Duni.com



Subscribe to our e-newsletter on Duni.com.



STICKERS AND SLEEVES



BASIC PRINTING

POWER AHEAD WITH PERSONALISATION

Personalised products make all the difference. They not only bring your brand to life and make for a better customer experience; they can also help to simplify operations too.

Whatever your budget, our experienced team can help you get the optimal solution for your particular needs – ranging from printing and embossing standard products to creating tailor-made packaging.



Basic products, before and after printing.



EMBOSSING



FULLY CUSTOMISED PRODUCTS

BRAND BUILDING THE EASY WAY

With our one-stop-shop personalisation service, it's easy to organise a concept comprising of matching personalised products. You get local support every step of the way, the benefits of the Duni international network, and a proven, easy-to-work-with process. You also get our many decades of expertise in design, materials and customisation.

QUESTION WE CAN HELP WITH?

Our experts are standing to offer assistance. To get their contact details, simply scan the QR-code or visit Duni.com.



END-TO-END IN FOUR EASY STEPS



1. IDEA

You tell us about your vision, product needs, the quality and sizes you are considering. We help you define the optimal sizes and materials.



2. PRE-VISUALISATION

You provide digital files of your logo and, if relevant, design. We create a digital proposal showing how your artwork will look applied to the particular products.



3. APPROVAL

Only once you have reviewed the proposal and given your approval, we start planning and production.



4. DELIVERY

We deliver your personalised products, as soon as they are made.

A WORD FROM OUR CLIENTS:



"The bagasse take-away packaging Duni created for us complies with two values that are very important to Jim Block: environmental consciousness and sustainability."

Kristin Putzke
Managing Director Jim Block



"Since we launched our customised take-away box, sales of take-out lunches have increased dramatically."

Sebastian Lesaar,
Director Supply Chain Management
Vapiano SE



"Dunis bagasse has made it possible for us to offer an individualized take-away bowl that is both environmentally friendly and attractive. Perfect package for our precious greens."

David Egonson
Owner and Founder of Holy Greens



DUNIFORM®

PROFESSIONAL IN-HOUSE PACKAGING MADE EASY

For over 40 years, the Duniform® concept has set the standard for simple, smart professional in-house sealable packaging. Over that time, it has helped to drive success for many hotels, restaurants, meal delivery service (MDS) companies, caterers and retailers. Since 1977 the concept has consistently grown in popularity and scale, but the idea it is built on – that good food deserves good packaging – remains the same.



Subscribe to our newsletter to get more information about Duniform®.



DUNIFORM®

READY FOR THE READY-MADE MEAL REVOLUTION?

The ready-made meal market is thriving. Busy, diet-conscious consumers want healthy meals, which they can reheat at home, at work or at a friend's place. Demand for Home Meal Replacement services is also booming. You can easily capitalise on these opportunities with Duniform® trays. They come in a choice of formats and renewable materials to suit all needs. For instance, eco-conscious Duniform® Bioplastic trays are available in two great designs: Caterline and Take-away.



► **WATCH THE MOVIE** Check out the Duniform® movie at Duni.com

NEW

DUNIFORM®
PEARL



DUNIFORM® PEARL AN ALL-ROUND WINNER

Inspired by Asian bowls, sealable Duniform® Pearl containers come in a deep plate shape. They bring customers a winning combination: the convenience of a premium-quality take-away container and an effortless dining experience. Particularly ideal for the elderly, they add an extra dimension to the pleasure of take-away food – whatever is on your menu.



"Designed to match natural eating behaviour, sealable Duniform® Pearl containers come in a refreshing, convenient deep plate shape. They enhance any meal."

Karolin Larsson, Product & Concept Designer



BAGASSE BOWLS

- High-quality, eco-conscious materials
- Crystal-clear convenient lids
- rPET lids can be embossed



Material: Bagasse max +100°C (microwarmable)
rPET max +70°C

ecoecho®



No.	Article	Description	Colour	Material	Size LxWxH (mm)	Volume (ml)	Qty/Cart.
1	169211	Bagasse Bowl ecoecho®	Brown	Bagasse	154x154x56	600	12x40
2	188060	rPET Lid for 169211 ecoecho®	Transparent	100% rPET	170x170x35	-	9x40
3	177000	Bagasse Bowl ecoecho®	Brown	Bagasse	194x194x48	800	8x40
4	177001	Bagasse Bowl ecoecho®	White	Bagasse	194x194x48	800	8x40
5	177002	Bagasse Bowl ecoecho®	Brown	Bagasse	194x194x60	1000	8x40
6	177003	Bagasse Bowl ecoecho®	White	Bagasse	194x194x60	1000	8x40
7	169212	Bagasse Bowl ecoecho®	Brown	Bagasse	194x194x53	900	4x40
8	169213	Bagasse Bowl ecoecho®	Brown	Bagasse	194x194x65	1200	4x40
9	177004	Bagasse Lid for 169212 / 169213 / 177000 / 177002 ecoecho®	Brown	Bagasse	194x194x27	-	8x40
10	177005	Bagasse Lid for 177001 / 177003 ecoecho®	White	Bagasse	201x201x27	-	8x40
11	188061	rPET Lid for 169212 / 169213 / 177000 - 177003 ecoecho®	Transparent	100% rPET	201x201x27	-	4x40

* We are committed to creating products that lead the way when it comes to reduced environmental impact. Reflecting this, Duni rPet lids for Bagasse boxes will be made from 100% recycled material by 2018.



BAGASSE BOXES

- High-quality, eco-conscious materials
- Crystal-clear convenient lids
- rPET lids can be embossed



Material: Bagasse max +100°C (microwarmable)
rPET max +70°C

ecoecho®



No.	Article	Description	Colour	Material	Size LxWxH (mm)	Volume (ml)	Qty/Cart.
1	177006	Bagasse Box ecoecho®	Brown	Bagasse	155x155x53	900	9x40
2	176871	Bagasse Box ecoecho®	White	Bagasse	155x155x53	900	9x40
3	188062	rPET Lid for 177006 / 176871 ecoecho®	Transparent	100% rPET	156x156x44	-	8x40
4	177008	Bagasse Box ecoecho®	Brown	Bagasse	230x155x36	850	12x40
5	177009	Bagasse Box ecoecho®	White	Bagasse	230x155x36	850	12x40
6	177010	Bagasse Box ecoecho®	Brown	Bagasse	230x155x46	1200	12x40
7	177011	Bagasse Box ecoecho®	White	Bagasse	230x155x46	1200	12x40
8	188063	rPET Lid for 177008-177011 ecoecho®	Transparent	100% rPET	239x165x28	-	6x40

* We are committed to creating products that lead the way when it comes to reduced environmental impact. Reflecting this, Duni rPet lids for Bagasse boxes will be made from 100% recycled material by 2018.



MADE FROM PLANTS

Made from compostable bagasse, a state-of-the-art material that is the future of packaging, the Snack Box enables you to present your entire offering as sustainable. If you are looking for a robust feel-good solution, look no further.



BAGASSE SNACK BOX

- Compostable
- Made out of renewable by-products
- Stackable
- Hinged lid

Material: Bagasse max +100°C
(microwarmable)

ecoecho®



No.	Article	Description	Vol (ml)	Size Ø (mm) LxWxH	Qty/ Cart.
1	178071	Bagasse Snack Box ecoecho®	575	145x145x100	4x50
2	178072	Bagasse Snack Box ecoecho®	750	185x185x70	6x50





BAGASSE PIZZA BOX

- Compostable
- Made out of renewable by-products
- Keeps pizza warmer longer than regular carton

Material: Bagasse max +100°C
(microwarmable)

ecoecho®



No.	Article	Description	Colour	Size (mm) LxWxH	Qty/ Cart.
1	168742	Bagasse Pizza Box Bottom ecoecho®	Brown	356x356x34	3x55
2	168743	Bagasse Pizza Box Lid ecoecho®	Brown	363x363x19	3x55



1



2



Sustainable ecoecho® napkins are a perfect match to eco-friendly packaging. Discover the full range in our Table Top catalogues.

BAGASSE MEAL BOXES

- Compostable
- Made from renewable by-products
- Hinged lid

Material: Bagasse max +100°C (microwarmable)

ecoecho®



No.	Article	Description	Comp	Size (mm) LxWxH	Vol (ml)	Qty/ Cart.
1	163073	Bagasse Meal Box ecoecho®	1	162x152x80	475	4x50
2	163080	Bagasse Meal Box ecoecho®	1	185x143x62	530	6x50
3	163079	Bagasse Meal Box ecoecho®	1	239x156x63	850	4x60
4	182543	Bagasse Meal Box ecoecho®	2	241x163x65	470/300	5x50
5	163075	Bagasse Meal Box ecoecho®	1	225x201x85	1000	3x50
6	182544	Bagasse Meal Box ecoecho®	3	225x201x85	325/70/60	4x50
7	163076	Bagasse Meal Box ecoecho®	1	236x231x81	1200	2x55
8	163077	Bagasse Meal Box ecoecho®	3	236x231x81	350/120/120	2x50





BAGASSE SUSHI BOXES

- Compostable
- Made from renewable by-products
- Crystal-clear lid

Material: Bagasse/PBS max +40°C
PLA max +40°C

ecoecho®

No.	Article	Description	Colour	Material	Size (mm) LxWxH	Qty/ Cart.
1	168856	Bagasse Sushi Box ecoecho®	Black	Bagasse/PBS	180x111x22	4x125
2	169869	PLA Lid for 168856 ecoecho®	Transparent	PLA	185x115x30	4x125
3	168847	Bagasse Sushi Box ecoecho®	Black	Bagasse/PBS	243x147x22	4x125
4	168849	PLA Lid for 168847 ecoecho®	Transparent	PLA	247x151x27	4x125
5	168848	Bagasse Sushi Box ecoecho®	Black	Bagasse/PBS	274x197x20	4x125
6	168850	PLA Lid for 168848 ecoecho®	Transparent	PLA	280x205x27	4x125

SUSHI & LUNCH BOXES

- High lid for great food protection
- Hinged lid

Material: PS max +100°C
PP max +100°C



No.	Article	Description	Colour	Material	Comp	Size (mm) LxWxH	Vol (ml)	Qty/ Cart.
1	144209	Sushi Box	Black/Transparent	PS	1	185x135x54	500	1x200
2	170307	Lunch Box	Black/Transparent	PS	1	185x135x54	500	1x200
3	172632	Lunch Box	Black/Transparent	PS	1	270x135x54	750	1x160
4	161973	Insert for 172632/118962	Black	PP	8	263x123x18	8x50	1x300
5	118962	Lunch Box	Blue/Transparent	PS	1	270x135x54	750	1x160
6	127806	Lunch Box	Blue/Transparent	PS	1	272x188x53	1100	1x160
7	127803	Lunch Box	White/Transparent	PS	1	338x250x63	1800	1x100





PLA SALAD BOWLS

- Compostable
- Made out of 100% renewable resources
- Superb transparency

ecoecho®



Material: PLA max +40°C

No.	Article	Description	Size (mm) LxWxH	Vol (ml)	Qty/ Cart.
1	159862	PLA Salad Bowl ecoecho®	220x220x45	700	6x45
2	159863	PLA Salad Bowl ecoecho®	220x220x60	950	6x45
3	159864	PLA Lid for 159862/159863 ecoecho®	230x230x30	-	6x45



BASIC SALAD BOWLS

Material: PS max +70°C



No.	Article	Description	Colour	Size (mm) LxWxH	Vol (ml)	Qty/ Cart.
1	102970	Salad Bowl	Transparent	180x180x75	1000	6x50
2	168741	Salad Bowl	Black	180x180x75	1000	6x50
3	102971	Lid for 102970/168741	Transparent	186x186x12	-	6x50



SALAD BOWLS WITH FORK

- Fork included in selected bowls
- Hinged lid
- Crystal clear transparency



Material: APET max +70°C

No.	Article	Description	Size (mm) LxWxH	Vol (ml)	Qty/ Cart.
1	161174	Salad Bowl with Fork	178x115x40	250	1x400
2	161175	Salad Bowl with Fork	178x115x48	350	1x400
3	161176	Salad Bowl with Fork	190x140x52	500	1x200
4	161177	Salad Bowl with Fork	190x140x70	750	1x200
5	161178	Salad Bowl	190x140x70	1000	1x144





OCTAVIEW® COLD USE

- Contemporary design language
- Top-quality APET material
- Crystal-clear hinged lid
- Secure closing with haptic click
- Smart stack system



Material: APET max +70°C

No.	Article	Description	Comp	Size (mm) LxWxH	Vol (ml)	Qty/ Cart.
1	188018	Octaview® S	1	150x150x70	400	1x400
2	188019	Octaview® M	1	185x185x70	625	1x255
3	188020	Octaview® M+	1	185x185x90	800	1x255
4	188021	Octaview® L	1	225x225x65	925	1x100
5	188022	Octaview® L+	1	225x225x80	1150	1x100

OCTAVIEW®
GREAT DESIGN.
MADE EVEN GREATER.

Passionate about getting every little detail right, we have introduced many subtle refinements to the new Octaview® take-away boxes. These make them even more eye-catching, even more of a pleasure to use, and even more convenient.

► **WATCH THE MOVIE**
Check out the Octaview movie
at duni.com





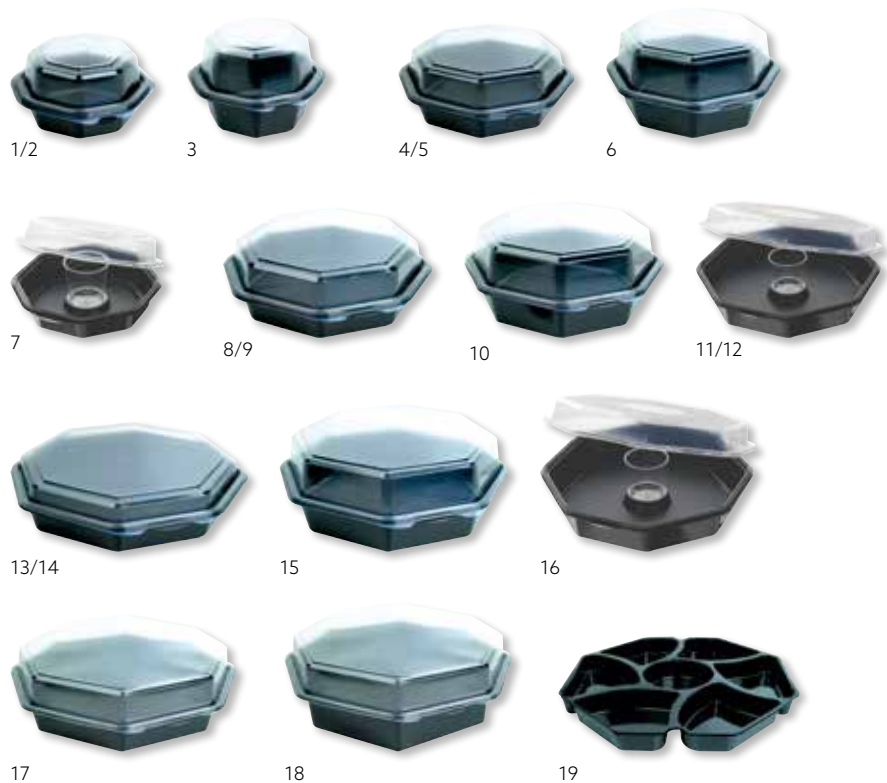
OCTAVIEW® COLD USE

- Hinged lid
- Tear-off function on selected boxes*
- Suitable for cold food
- Secure dressing glass in selected boxes



Material: PS max +70°C

No.	Article	Description	Comp	Size (mm) LxWxH	Vol (ml)	Qty/ Cart.
1	866013	Octaview®	1	118x118x60	200	1x375
2	148055	Octaview® (C&C-packed 866013)	1	118x118x60	200	8x35
3	116630	Octaview®	1	118x118x80	265	1x375
4	127765	Octaview®	1	160x160x60	400	1x405
5	163226	Octaview® (C&C-packed 127765)	1	160x160x60	400	9x20
6	127763	Octaview®	1	160x160x80	580	1x405
7	149867	Octaview® with glass	1	160x160x60	450/65	1x360
8	127800	Octaview®*	1	190x190x60	640	1x270
9	157573	Octaview® (C&C-packed 127800)*	1	190x190x60	640	6x35
10	127801	Octaview®*	1	190x190x80	850	1x270
11	157541	Octaview® with glass*	1	190x190x70	950/90	1x240
12	157571	Octaview® (C&C-packed 157541)*	1	190x190x70	950/90	6x35
13	127766	Octaview®*	1	230x230x50	1000	1x190
14	157572	Octaview® (C&C-packed 127766)*	1	230x230x50	1000	4x35
15	127767	Octaview®*	1	230x230x80	1300	1x180
16	149868	Octaview® with glass*	1	230x230x70	1250/65	1x160
17	149873	Octaview®*	1	305x305x60	1800	1x75
18	149874	Octaview®*	1	305x305x80	2500	1x75
19	118846	Octaview® insert for 149873/149874	7	284x284x25	140/6x180	1x150





OCTAVIEW® & OCTABOWL® HOT USE

- Hinged lid
- Suitable for hot food
- Lids with tear-off function

Material: PS max +100°C
(microwarmable)



No.	Article	Description	Comp	Size (mm) LxWxH	Vol (ml)	Qty/ Cart.
1	149871	Octaview®	1	160x160x80	580	1x405
2	148049	Octaview® (C&C-packed 149871)	1	160x160x80	580	6x35
3	149864	Octabowl®	1	160x160x72	500	1x405
4	149869	Octaview®	2	190x190x60	350/200	1x290
5	149865	Octabowl®	1	190x190x71	700	1x290
6	163227	Octabowl® (C&C-packed 149865)	1	190x190x71	700	9x20
7	149870	Octaview®	2	230x230x50	580/280	1x170
8	163228	Octaview® (C&C-packed 149870)	2	230x230x50	580/280	5x30
9	149872	Octaview®	3	650/220/220	220/220/650	1x160
10	163229	Octaview® (C&C-packed 149872)	3	650/220/220	220/220/650	5x30
11	149866	Octabowl®	1	230x230x72	1050	1x170



Add a flexible finishing touch: we now offer profile printed stickers & adhesive sleeves that enable you to promote your brand on-the-go.



DUNI GOURMET® COLD USE

- Suitable for cold food
- Excellent shelf display
- Crystal clear lid



Material: APET max +70°C

No.	Article	Description	Colour	Size (mm) LxWxH	Vol (ml)	Qty/ Cart.
1	159114	Gourmet® Cold	Black	197x197x33	750	1x450
2	159115	Gourmet® Cold	Transparent	197x197x44	1000	1x450
3	159853	Gourmet® Cold	Black	197x197x44	1000	1x450
4	159112	Lid for 159114/159115/159853	Transparent	198x198x18	-	1x450
5	163081	Gourmet® Cold Bowl round	Transparent	140x140x65	500	10x50
6	163070	Lid for 163081	Transparent	140x140x20	-	10x50



DUNI GOURMET® HOT USE

- Suitable for hot food
- Excellent shelf display
- Crystal clear lid



Material: PP max +120°C (microwarmable)
APET max +70°C

No.	Article	Description	Colour	Material	Size (mm) LxWxH	Vol (ml)	Qty/ Cart.
1	163222	Gourmet® Hot	Black	PP	197x197x33	750	1x450
2	163223	Gourmet® Hot	Black	PP	197x197x44	1000	1x450
3	159112	Lid for 163222/163223	Transparent	APET	198x198x18	-	1x450



DUNI TRIGO® COLD USE

- Suitable for cold food
- Eye-catching design
- Crystal clear lid



Material: APET max +70°C

No.	Article	Description	Colour	Size (mm) LxWxH	Vol (ml)	Qty/ Cart.
1	162460	Trigo® Cold	Transparent	149x149x58	400	1x250
2	162461	Trigo® Cold	Black	149x149x58	400	1x250
3	162462	Lid for 162460/162461	Transparent	149x149x14	-	1x250
4	162463	Trigo® Cold	Transparent	195x195x72	950	1x250
5	162464	Trigo® Cold	Black	195x195x72	950	1x250
6	162465	Lid for 162463/162464	Transparent	195x195x14	-	1x250



MEAL BOXES

- Suitable for hot food
- Venting holes in the lid for steam release
- One lid fits all



Material: PP max +120°C (microwarmable)

No.	Article	Description	Colour	Comp	Size (mm) LxWxH	Vol (ml)	Qty/ Cart.
1	161182	Meal Box	Black	1	240x150x40	800	5x50
2	161179	Meal Box	Black	2	240x150x40	500/250	5x50
3	161180	Meal Box	Black	3	240x150x40	500/2x110	5x50
4	161181	Lid for 161182/161179/ 161180	Transparent	-	240x150x20	-	5x50







↑
ONE LID MATCHES
BOTH BOXES
↓



VIKING ECOECHO®

- Made from FSC®-certified cardboard and PLA made from 100% renewable resources
- Modular, stackable and microwarmable
- Tapered edges for strong leak-resistance
- 2-piece design with crystal-clear lid

ecoecho®



Material: Cardboard/PLA max +100°C

No.	Article	Description	Colour	Size (mm) LxWxH	Vol (ml)	Qty/ Cart.
1	188114	Viking ecoecho® Cube Mini Lid	Brown	75x75x20	-	1x300
2	188113	Viking ecoecho® Cube Mini	Brown	75x75x60	250	1x300
3	188112	Viking ecoecho® Cube Lid with window	Brown	113x113x29	-	1x300
4	188111	Viking ecoecho® Cube Lid	Brown	113x113x29	-	1x300
5	188110	Viking ecoecho® Cube Low	Brown	113x113x50	510	1x300
6	188109	Viking ecoecho® Cube High	Brown	113x113x100	820	1x300
7	188108	Viking ecoecho® Block Lid with window	Brown	140x140x29	-	1x300
8	188107	Viking ecoecho® Block Lid	Brown	140x140x29	-	1x300
9	188106	Viking ecoecho® Block Box	Brown	140x140x75	1200	1x300
10	188105	Viking ecoecho® Brick Lid with window	Brown	200x140x30	-	1x300
11	188104	Viking ecoecho® Brick Lid	Brown	200x140x30	-	1x300
12	188103	Viking ecoecho® Brick Box	Brown	200x140x45	1100	1x300
13	188102	Viking ecoecho® Slim Brick Lid with window	Brown	225x85x30	-	1x300
14	188101	Viking ecoecho® Slim Brick Lid	Brown	225x85x30	-	1x300
15	188100	Viking ecoecho® Slim Brick Box	Brown	225x85x75	1100	1x300



NEW

VIKING
ECOECO®





CARDBOARD/PLA BOXES & BAGS

- FSC®-certified cardboard
- Crystal clear window
- Made out of 100% renewable resources



1



2



3



4



5



6



7

ecoecho®



Material: Cardboard/PLA/Cellulose max +40°C

No.	Article	Description	Colour	Material	Size (mm) LxWxH	Vol (ml)	Qty/ Cart.
1	159908	Meal Box with Window ecoecho®	Brown	Cardb./PLA	120x110x45	450	1x200
2	159910	Meal Box with Window ecoecho®	Brown	Cardb./PLA	200x120x45	900	1x250
3	159909	Meal Box with Window ecoecho®	Brown	Cardb./PLA	200x155x45	1200	1x200
4	159911	Wrap Box with Window ecoecho®	Brown	Cardb./PLA	90x50x130	550	1x1000
5	159912	Sandwich Box (double wedge) with Window ecoecho®	Brown	Cardb./PLA	175x75x90	590	1x500
6	159913	Roll/Bagel/Muffin Bag ecoecho®	Brown	Cardb./ Cellulose	280x150x55	-	1x1000
7	159914	Baguette Bag ecoecho®	Brown	Cardb./ Cellulose	355x100x55	-	1x1000

CARDBOARD/ PLA BOWLS

- Eco-conscious material
- Customisable



1



3



4



5

6

Material: Cardboard/PLA max +100°C
CPLA max +100°C

ecoecho®



No	Article	Description	Colour	Material	Size LxWxH (mm)	Volume (ml)	Qty/Cart.
1	170732	Cardboard Bowl ecoecho®	Brown	Cardb./PLA	90x90x62	250	8x50
2	170733	CPLA Lid for 170732 ecoecho®	White	CPLA	95x95x10	-	16x50
3	170734	Cardboard Bowl ecoecho®	Brown	Cardb./PLA	115x115x63	400	10x50
4	170735	Cardboard Bowl ecoecho®	Brown	Cardb./PLA	115x115x77	550	10x50
5	170736	Cardboard Bowl ecoecho®	Brown	Cardb./PLA	115x115x148	950	10x50
6	170737	CPLA Lid for 170734/170735/170736 ecoecho®	White	CPLA	120x120x10	-	16x50

VIKING

- No need to fold boxes or lids
- Modular, stackable and microwarmable
- Tapered edges ensure great leak-resistance
- Expand when filled for tight-fitting lid



Material: Cardboard/PE max +100°C

No.	Article	Description	Colour	Size (mm) LxWxH	Vol (ml)	Qty/ Cart.
1	188058	Viking Cube Lid	Brown	113x113x29	-	300
2	188057	Viking Cube Low Box	Brown	113x113x50	510	300
3	188056	Viking Cube High Box	Brown	113x113x100	820	300
4	188055	Viking Block Lid	Brown	140x140x29	-	300
5	188054	Viking Block Box	Brown	140x140x75	1200	300
6	188053	Viking Brick Lid	Brown	200x140x30	-	300
7	188052	Viking Brick Box	Brown	200x140x45	1100	300
8	188051	Viking Slim Brick Lid	Brown	225x85x30	-	300
9	188050	Viking Slim Brick Box	Brown	225x85x75	1100	300





Add a flexible finishing touch: we now offer profile printed stickers & adhesive sleeves that enable you to promote your brand on-the-go.



CARDBOARD/PE SALAD BOWLS

- Crystal clear lid
- Customisable bowl

Material: Cardboard/PE max +40°C
APET max +40°C



No.	Article	Description	Colour	Material	Size (mm) LxWxH	Vol (ml)	Qty/ Cart.
1	168000	Salad Bowl	White	Cardboard/PE	124x124x73	625	13x45
2	168003	Lid for 168000	Transparent	APET	134x134x9	-	8x100
3	168001	Salad Bowl	White	Cardboard/PE	150x150x60	775	9x58
4	168004	Lid for 168001	Transparent	APET	158x158x20	-	5x78
5	168002	Salad Bowl	White	Cardboard/PE	184x184x65	1260	6x46
6	169483	Salad Bowl	Brown	Cardboard/PE	184x184x65	1260	1x276
7	168005	Lid for 168002/ 169483	Transparent	APET	190x190x28	-	4x80



CARDBOARD/PE BASIC SOUP BOWLS

Material: Cardboard/PE max +100°C
PP max +100°C



No.	Article	Description	Material	Size(mm) LxWxH	Vol (ml)	Qty/ Cart.
1	170620	Soup Bowl	Cardboard/PE	90x90x62	250	8x50
2	170621	Lid for 170620	PP	95x95x15	-	16x50
3	170622	Soup Bowl	Cardboard/PE	115x115x63	400	10x50
4	170623	Soup Bowl	Cardboard/PE	115x115x77	550	10x50
5	170624	Soup Bowl	Cardboard/PE	115x115x148	950	10x50
6	170625	Lid for 170622/170623/ 170624	PP	120x120x15	-	10x50



CARDBOARD SOUP BOWLS & WOK BOX

- Venting holes for steam release
- Customisable bowls, lids & box
- Microwavable soup bowls

Material: Cardboard/PP max +120°C (microwarmable)
Cardboard/PE max +70°C



No.	Article	Description	Material	Size (mm) LxWxH	Vol (ml)	Qty/ Cart.
1	168006	Soup Bowl*	Cardboard/PP	91x91x85	355	20x25
2	168010	Lid for 168006	Cardboard/PE	90x90x17	-	24x18
3	168007	Soup Bowl*	Cardboard/PP	97x97x99	485	24x40
4	168011	Lid for 168007	Cardboard/PE	97x97x16	-	20x25
5	168008	Soup Bowl*	Cardboard/PP	115x115x107	775	10x25
6	168009	Soup Bowl*	Cardboard/PP	115x115x142	1030	20x25
7	168012	Lid for 168008/168009	Cardboard/PE	116x116x20	-	10x25
8	168013	Wok Box	Cardboard/PE	95x95x110	810	15x29

* Microwavable



SOUP BOWLS

- Handles to prevent burned hands

Material: PS max +100°C (microwarmable)
 PP/MIN max +120°C (microwarmable)
 PP max +120°C (microwarmable)



No.	Article	Description	Colour	Material	Size(mm) LxWxH	Vol (ml)	Qty/ Cart.
1	119573	Soup Bowl	White	PS	149x122x50	275	10x100
2	177907	Bowl	Black	PP/MIN	153x153x45	350	1x480
3	177908	Bowl	Black	PP/MIN	153x153x60	500	1x480
4	177909	Bowl	Black	PP/MIN	153x153x70	650	1x480
5	177910	Lid for 177907-177909	Transparent	PP	159x159x22	-	1x480



THERMO SOUP BOWL

- Venting holes in lid for steam release

Material: EPS/PS max +100°C (microwarmable)



No.	Article	Description	Colour	Material	Size(mm) LxWxH	Vol (ml)	Qty/ Cart.
1	778194	Thermo Bowl	White	EPS	115x115x76	460	20x25
2	778195	Lid for 778194	Transparent	PS	115x115x7	-	10x50



DESSERT BOWLS

- Superb transparency

Material: PS max +100°C
 APET max +70°C



No.	Article	Description	Material	Size (mm) LxWxH	Vol (ml)	Qty/ Cart.
1	157175	Dessert Bowl	PS	85x85x45	180	20x50
2	157177	Lid for 157175	APET	90x90x10	-	20x50
3	157176	Dessert Bowl	PS	95x95x50	230	20x50
4	157178	Lid for 157176	APET	100x100x10	-	20x50
5	119568	Dessert Bowl	PS	104x104x40	250	20x75
6	118872	Lid for 119568	PS	106x106x14	-	15x100



ECO DRESSING CUPS

- Compostable
- Made out of renewable by-products
- Crystal clear lids

Material: Bagasse max +100°C
rPET max +70°C
PLA max +40°C

ecoecho®



No.	Article	Description	Colour	Material	Size (mm) LxWxH	Vol (ml)	Qty/ Cart.
1	169865	Bagasse Dressing Cup ecoecho®	White	Bagasse	63x63x18	30	10x150
2	169866	Bagasse Dressing Cup ecoecho®	White	Bagasse	63x63x32	60	10x150
3	169867	Bagasse Dressing Cup ecoecho®	White	Bagasse	63x63x53	85	10x150
4	180122	Dressing Cup	Transparent	rPET	64x64x30	60	25x100
5	180123	Lid for 180122	Transparent	rPET	66x66x7	-	25x100
6	159865	Dressing Cup	Transparent	PLA	62x62x30	60	12x250
7	159866	Lid for 169865-67 / 159865	Transparent	PLA	65x65x5	-	12x250
8	159867	Dressing Cup	Transparent	PLA	74x74x35	100	10x250
9	159868	Dressing Cup	Transparent	PLA	74x74x47	120	10x250
10	159869	Lid for 159867/159868	Transparent	PLA	78x78x6	-	10x250



DRESSING CUPS

- Superb transparency

Material: PS max +70°C
APET max +70°C



No.	Article	Description	Colour	Material	Size (mm) LxWxH	Vol (ml)	Qty/ Cart.
1	111267	Dressing Cup	Transparent	PS	47x47x29	30	48x50
2	127762	Lid for 111267	Transparent	PS	50x50x5	-	1x2400
3	161088	Dressing Cup	Transparent	APET	80x80x46	110	20x50
4	161089	Lid for 161088	Transparent	APET	93x93x9	-	20x50





CRYSTAL DELI

- Top quality with exceptional clarity
- 80% recycled material
- Accentuates beauty of food
- One convenient lid fits all sizes
- Efficient lid application

Material: rPET max +70°C

ecoecho®



No.	Article	Description	Size(mm) LxWxH	Vol (ml)	Qty/ Cart.
1	177065	Crystal Deli ecoecho®	116x116x44	250	10x35
2	177066	Crystal Deli ecoecho®	116x116x61	375	10x35
3	177067	Crystal Deli ecoecho®	116x116x75	500	10x35
4	177068	Crystal Deli ecoecho®	116x116x107	750	10x35
5	177069	Crystal Deli lid ecoecho®	120x120x14	-	10x35





FIXPACK®

- Sturdy
- Lids fit multiple containers
- Suitable for hot food

Material: APET max +70°C
PP max +120°C (microwarmable)



No.	Article	Description	Material	Size (mm) LxWxH	Vol (ml)	Qty/ Cart.
1	161088	Dressing Cup	APET	80x80x46	110	20x50
2	161089	Lid for 161088	APET	93x93x9	-	20x50
3	159141	Fixpack® Round	PP	112x112x40	200	14x50
4	159142	Fixpack® Round	PP	112x112x61	300	14x50
5	160510	Fixpack® Round	PP	112x112x85	500	14x50
6	159143	Lid for 159141/159142/160510	PP	112x112x6	-	14x50
7	159144	Fixpack® Rectangular	PP	146x110x41	350	10x50
8	159145	Fixpack® Rectangular	PP	146x110x54	500	10x50
9	160512	Fixpack® Rectangular	PP	146x110x83	750	10x50
10	159146	Lid for 159144/159145/160512	PP	146x110x6	-	10x50
11	170513	Fixpack® Rectangular with Lid	PP	145x110x110	1000	10x25



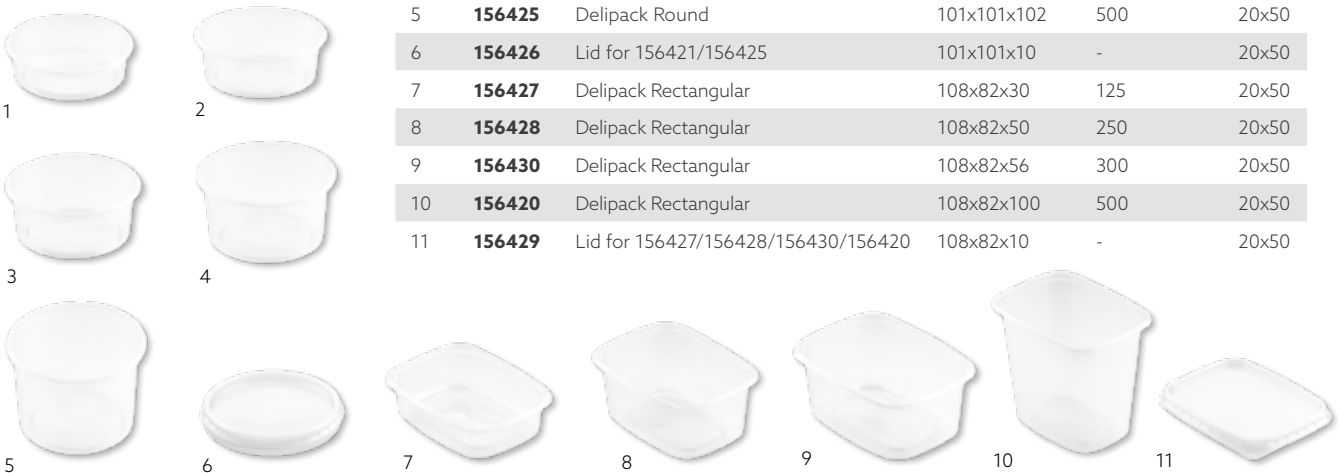
DELIPACK

- Lids fit multiple containers

Material: PP max +100°C (microwarmable)



No.	Article	Description	Size (mm) LxWxH	Vol (ml)	Qty/ Cart.
1	156421	Delipack Round	101x101x30	125	20x50
2	156422	Delipack Round	101x101x37	200	20x50
3	156423	Delipack Round	101x101x48	250	20x50
4	156424	Delipack Round	101x101x61	300	20x50
5	156425	Delipack Round	101x101x102	500	20x50
6	156426	Lid for 156421/156425	101x101x10	-	20x50
7	156427	Delipack Rectangular	108x82x30	125	20x50
8	156428	Delipack Rectangular	108x82x50	250	20x50
9	156430	Delipack Rectangular	108x82x56	300	20x50
10	156420	Delipack Rectangular	108x82x100	500	20x50
11	156429	Lid for 156427/156428/156430/156420	108x82x10	-	20x50





Add a flexible finishing touch: we now offer profile printed stickers & adhesive sleeves that enable you to promote your brand on-the-go.

TAKE-AWAY BAGS

Material: Paper
HDPE

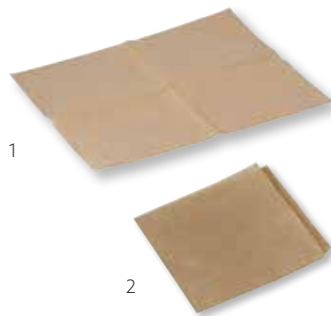


No.	Article	Description	Material	Colour	Size (mm) LxWxH	Vol (l)	Qty/ Cart.
1	174730	Take-away Bag without handles	Paper	Brown	180x110x265	5	1x500
2	169875	Take-away Bag	Paper	Brown	350x170x245	15	1x200
3	169876	Take-away Bag	Paper	White	350x170x245	15	1x200
4	172528	Carry Bag 2 pcs with tear-off function	HDPE	Transparent	350x270	2 pcs x 1,4 l	1x1000

TAKE-AWAY PAPER AND POCKET

- Trendy
- Convenient on-the-go solution
- Grease resistant

Material: Paper/PE max +70°C



No.	Article	Description	Colour	Size (mm) LxWxH	Qty/ Cart.
1	174728	Sheet paper	Brown	330x410	1x1000
2	174729	Sandwich pocket	Brown	160x160	1x1000

SANDWICH BOXES

- Made out of recycled material
- Superb transparency
- Hinged lid

Material: rPET max +70°C

ecoecho®



No.	Article	Description	Size (mm) LxWxH	Vol (ml)	Qty/ Cart.
1	157107	Sandwich Wedge	160x55x85	350	1x600
2	157108	Sandwich Wedge	160x65x85	500	1x500
3	157109	Sandwich Wedge	160x75x85	600	1x600
4	159567	Bagel Box	118x85x60	400	1x700

FINGER FOOD CONCEPT

- Contemporary
- Convenient solution



1



2



3 New



4



FOOD APPROVED LAMINATED SIDE

5



6



7



FOOD APPROVED LAMINATED SIDE

No.	Article	Description	Colour	Size LxWxH (mm)	Pack
1	174502	Dunisoft® Dispenser	White	200x200	24 x 50
2	174501	Dunisoft® Dispenser	White	200x200	12 x 100
3	183317	Dunisoft® Dispenser	Brown	200x200	24 x 50
4	174567	Paper Placemat	Cream	200x300	4 x 250
5	174475	Paper Placemat	Neutral	200x300	4 x 250
6	179621	Wet Towel Cleansing	Kraft	170x200	1 x 500
7	174578	Table Wipe Hygienic	-	180x185	50x20



SNACK SACCHETTO

- Integrated napkin
- Convenient on-the-go solution
- Grease resistant
- FSC®-certified

Material: Grease paper +70°C

ecoecho®



No.	Article	Description	Colour	Size LxWxH (mm)	Qty/ Cart.
1	176567	Snack sachetto, with white 2ply napkin	Brown	113x210	1x350
2	176568	Snack sachetto, with white 2ply napkin	Brown	143x210	1x300
3	176569	Snack sachetto, with white 2ply napkin	Brown	194x210	1x300



1



2



3





NEW

AMAZONICA



AMAZONICA

- Celebrate food, form and function
- Eco-conscious collection crafted from mindful materials

Material: Bagasse max +100°C (microwarmable)
CPLA max +70°C

ecoecho®



NEW

No	Article	Description	Material	Size Ø (mm)	Vol. (ml)	Qty/ Cart.
1	188070	Bagasse Plate 27 cm	Bagasse	270	-	10x25
2	188071	Bagasse Plate 19 cm	Bagasse	190	-	10x25
3	188072	Bagasse Bowl 47cl	Bagasse	-	470	10x35
4	188073	CPLA Fork 19 cm	CPLA	190	-	10x50
5	188074	CPLA Knife 19 cm	CPLA	190	-	10x50
6	188075	CPLA Spoon 19 cm	CPLA	190	-	10x50
7	188076	CPLA Dessert spoon 12,5 cm	CPLA	125	-	10x50
8	183237	Dunilin® Napkin 40 cm	Dunilin®	400x400	-	5x50
9	183238	Tissue Napkin 24 cm	Tissue 3-ply	240x240	-	8x250



Design by
Bernadotte & Kylberg



1 New



2 New



3 New

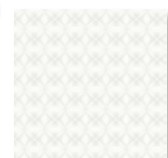


4 New

5 New

6 New

7 New



8 New



9 New



DUNI AMUSE-BOUCHE® BAGASSE

- Compostable
- Made out of renewable by-products
- Lids made out of crystal clear material

Material: Bagasse max +100°C (microwarmable)
rPET max +70°C

ecoecho®



No.	Article	Description	Material	Size (mm) LxWxH	Vol (ml)	Qty/ Cart.
1	181823	Dopio	Bagasse	90x70x20	50	12x40
2	181824	Folio	Bagasse	90x50x30	30	12x40
3	181825	Duo	Bagasse	180x110x20	60	12x40
4	181826	Trio	Bagasse	160x100x20	80	12x45
5	181827	2C	Bagasse	260x110x20	180	8x40
6	181822	Piatto	Bagasse	170x100x40	140	11x35
7	181821	Bolio	Bagasse	180x100x70	450	8x35
8	176013	Lid (for Bolio and Piatto)	rPET	180x110x30	-	6x70



DUNI AMUSE-BOUCHE®

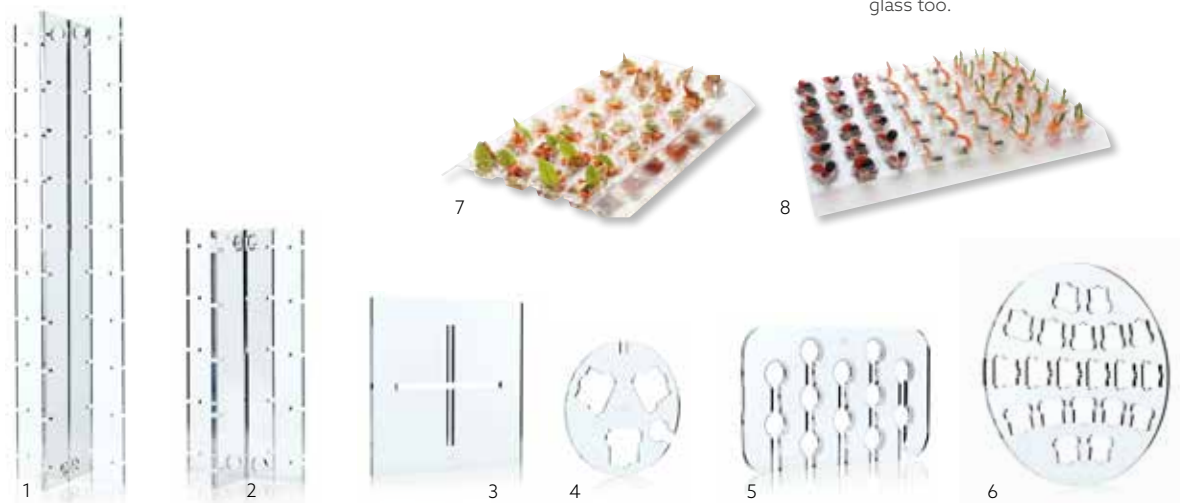
- Space-efficient presentation
- OK for dishwasher 65°C
- Reusable

Material: Acryl

No.	Article	Description	Size (mm) LxWxH	Qty/ Cart.
1	168327	Stand Large	754x190x10	4x2
2	168328	Stand Small	376x190x10	4x2
3	168329	Stand Foot	270x270x10	4x1
4	168326	Cocktail Plate	168x168x5	20x1
5	168324	Champagne Tray	350x212x10	5x1
6	168325	Waiter Serving Tray	390x390x10	5x1
7	165203	1/1 GN Display for 28pcs Containers	530x325x38	5x1
8	165204	2/1 GN Display for 54pcs Containers	650x530x38	5x1



The crystal clear plates neatly fit the stand, freeing-up space. Conveniently, they hold a glass too.



DUNI AMUSE-BOUCHE®

- Eye-catching design
- Superb transparency

Material: PS max +100°C
PET max +70°C

No.	Article	Description	Material	Size (mm) LxWxH	Vol. (ml)	Qty/ Cart.
1	159721	Square Large	PS	57x57x67	150	6x38
2	157492	Tri	PS	55x55x45	45	6x90
3	159722	Tri Large	PS	62x62x68	110	6x54
4	157497	Organic Puzzle	PS	53x53x45	50	6x100
5	123454	Organic Puzzle Large	PS	64x64x68	125	4x68
6	157491	Square	PS	47x47x45	60	6x100





DUNI AMUSE-BOUCHE®

- Eye-catching design
- Superb transparency

Material: PS max +100°C
PET max +70°C

No.	Article	Description	Colour	Size (mm) LxWxH	Vol. (ml)	Qty/ Cart.
1	123457	Taster	Transparent	75x45x28	25	6x135
2	170761	Taster	Black	75x45x28	25	6x135
3	157487	Lake	Transparent	97x60x16	35	6x90
4	170762	Lake	Black	97x60x16	35	6x90
5	170752	Plato	Transparent	95x95x11	-	6x132
6	170753	Plato	Black	95x95x11	-	6x132
7	170754	Plato Triangle	Transparent	88x88x11	-	6x180
8	170755	Plato Triangle	Black	88x88x11	-	6x180
9	170756	Dopio	Transparent	90x69x19	50	6x140
10	170757	Dopio	Black	90x69x19	50	6x140
11	170758	Folio	Transparent	89x51x25	15	6x156
12	170759	Folio	Black	89x51x25	15	6x156
13	170760	Faceto	Transparent	47x47x44	45	6x100





DUNI AMUSE-BOUCHE®

- Eye-catching design
- Superb transparency

Material: PS max +100°C

No.	Article	Description	Colour	Material	Size (mm) LxWxH	Vol. (ml)	Qty/ Cart.
1	167275	Square Large	Transparent	PS	68x68x70	200	15x45
2	157489	Globe	Transparent	PS	68x68x55	25	6x30
3	157488	Food Tube	Transparent	PS	45x58	35	6x65
4	157493	Espresso	Transparent	PS	48x45	50	6x48
5	123458	Espresso Large	Transparent	PS	62x68	125	4x44
6	159720	Stick	Transparent	PS	90	-	6x1200
7	157502	Mini Fork	Transparent	PS	96x18x4	-	6x250
8	157503	Mini Spoon	Transparent	PS	96x18x4	-	6x250
9	161214	Oval XL	Transparent	PS	126x112x68	460	4x30
10	161217	Lid for 161214	Transparent	PS	133x119x28	-	4x30
11	161212	Square XL	Transparent	PS	121x121x65	680	4x29
12	161215	Lid for 161212	Transparent	PS	124x124x26	-	4x29
13	161213	Tri XL	Transparent	PS	133x90x63	480	4x20
14	161216	Lid for 161213	Transparent	PS	136x124x26	-	4x20



1



2



3



4



5



6



7



8



9



10



11



12



13



14



DUNI AMUSE-BOUCHE®

- Ideal for larger events, value packs simplify handling
- Conveniently packed
- Fits to Duni Amuse-bouche display solutions

Material: PS max +100°C

No.	Article	Description	Colour	Material	Size (mm) LxWxH	Vol. (ml)	Qty/ Cart.
1	173025	Square	Transparent	PS	47x47x45	60	40x25
2	173084	Square Large	Transparent	PS	57x57x67	150	24x25
3	173085	Tri	Transparent	PS	55x55x45	45	28x30
4	173086	Tri Large	Transparent	PS	62x62x68	110	35x25
5	173087	Organic Puzzle	Transparent	PS	53x53x45	50	35x25
6	173088	Organic Puzzle Large	Transparent	PS	64x64x68	125	25x25



1



2



3



4



5



6





DUNI AMUSE-BOUCHE®

- Safe transport
- Modular system
- Perfect for pre-packed offers



Material: Cardboard/PE window max +100°C

No.	Article	Description	Material	Size (mm) LxWxH	Qty/ Cart.
1	165207	Catering Transport Box Small	Cardboard/PE	360x250x80	10x10
2	165206	Catering Transport Box Medium	Cardboard/PE	460x310x80	10x10
3	165205	Catering Transport Box Large	Cardboard/PE	550x365x80	7x10
4	165208	Catering Box Insert Small for 15pc	Cardboard/PE	357x247x30	10x10
5	165209	Catering Box Insert Medium for 24pcs Containers	Cardboard/PE	457x307x30	10x10



FINE FOOD LINE

- Modular design



Material: PS max +100°C

No.	Article	Description	Material	Size (mm) LxWxH	Qty/ Cart.
1	150839	Dessert Plate	PS	90x90x20	24x65
2	149889	Lid for 150839	PS	95x95x46	24x65
3	150838	Sidedish Plate	PS	180x90x20	12x65
4	149891	Lid for 150838	PS	190x100x50	12x65
5	150840	Dinner Plate	PS	180x180x20	6x70
6	149893	Lid for 150840	PS	190x190x50	6x70





1



2



3



4



5



6



7



8



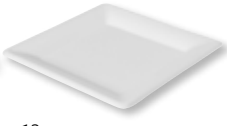
9



10



11



12



13



14



15



16



17

BAGASSE PLATES

- Compostable
- Made from natural by-products
- Full range offer in white and brown bagasse

Material: Bagasse
max +100°C (microwarmable)

ecoecho®



No.	Article	Description	Colour	Vol (ml)	Size Ø (mm)	Qty/ Cart.
1	161204	Dinner Plate	White	-	260	8x50
2	172499	Dinner Plate 3 Comp.	White	-	260	10x50
3	172504	Dinner Plate Oval	White	-	260	2x125
4	172498	Dinner Plate 2 Comp.	White	-	220	10x50
5	161205	Dinner Plate	White	-	220	8x50
6	161207	Dessert Plate	White	-	170	10x50
7	164768	Dessert Plate	White	-	150	8x125
8	172505	Soup Plate	White	450	180	20x50
9	161206	Soup Plate	White	300	160	10x50
10	182545	Square Plate	White	-	160x160	20x50
11	182546	Square Plate	White	-	200x200	10x50
12	182547	Square Plate	White	-	260x260	10x50
13	157179	Dinner Plate Oval	Brown	-	220	10x50
14	157180	Dinner Plate	Brown	-	220	9x50
15	157181	Soup Plate	Brown	350	160	10x50
16	157182	Dinner Plate	Brown	-	180	8x50
17	157183	Dinner Plate	Brown	-	260	10x50



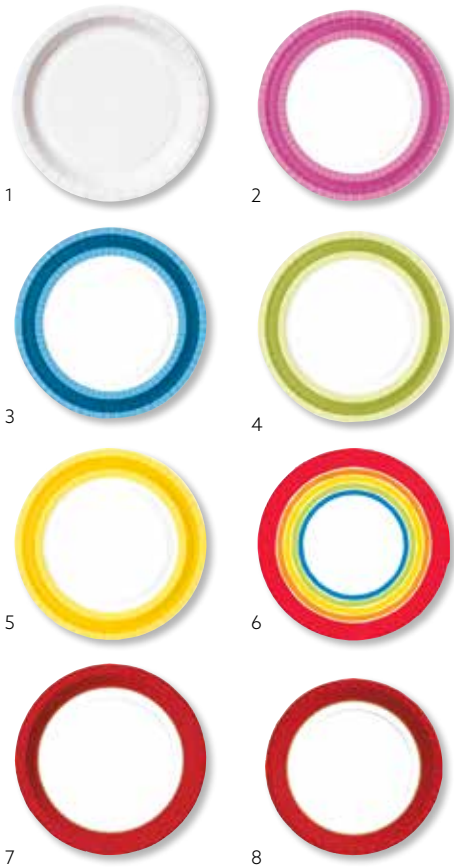




OUR PAPER PLATES ARE FSC®-CERTIFIED AND MADE OF VIRGIN FIBRES

The Forest Stewardship Council®, FSC®, is an international organization which promotes ecologically responsible, socially responsible and economically viable use of the world's forests. Requirements include respect for the rights of indigenous people and ensuring that biologically valuable forests are managed in such a way that their natural value is preserved.





PREMIUM BBQ PLATES

- Virgin fibres
- PP laminated
- All plates are FSC®-certified
- Extra sturdy



Material: Paper max +80°C

No.	Article	Description	Colour	Size Ø (mm)	Qty/ Cart.
1	171990	Dinner Plate	White	220	5x50
2	171981	Dinner Plate	Pink/White	220	5x50
3	171993	Dinner Plate	Blue/White	220	5x50
4	171992	Dinner Plate	Green/White	220	5x50
5	171991	Dinner Plate	Yellow/White	220	5x50
6	171994	Dinner Plate	Various	220	5x50
7	171995	Dinner Plate	Red/Gold	220	5x50
8	171987	Lunch Plate	Red/Gold	180	16x50
9	171996	Dinner Plate Bavaria	Blue/White	220	7x50



LAMINATED PAPER PLATES

- Virgin fibres
- PP laminated
- All plates are FSC®-certified



Material: Paper max +80°C

No.	Article	Description	Colour	Size Ø (mm)	Qty/ Cart.
1	171985	Snacking Plate	White	150	7x100
2	168351	Lunch Plate	White	180	12x100
3	168353	Soup Plate (300ml)	White	180	8x100
4	168354	Dinner Plate	White	220	3x100



PAPER PLATES

- Virgin fibres
- All plates are FSC®-certified



Material: Paper max +80°C

No.	Article	Description	Colour	Size Ø (mm)	Qty/ Cart.
1	142980	Sausage Plate	White	130x200	4x250
2	168738	Sausage Plate	White	110x170	8x250
3	794506	Demo Plate	White	90	1x2000
4	171982	Snacking Plate	White	150	9x100
5	171983	Lunch Plate	White	180	8x100
6	171984	Dinner Plate	White	220	3x100

MILAN PLATES

- The ideal complement to porcelain
- Superb stability
- Good stacking, saves space on buffet table

Material: PS max +100°C

No.	Article	Description	Colour	Size (mm)	Vol (ml)	Qty/ Cart.
1	165187	Milan Dinner Plate Extra Large	White	240x240	-	16x12
2	165188	Milan Dinner Plate Extra Large	Black	240x240	-	16x12
3	165186	Milan Cocktail Plate Large with Hole	White	210x210	-	16x12
4	167563	Milan Cocktail Plate Large with Hole	Black	210x210	-	16x12
5	165189	Milan Dinner Plate Large	White	210x210	-	16x12
6	165190	Milan Dinner Plate Large	Black	210x210	-	16x12
7	165191	Milan Sidedish Plate Medium	White	170x170	-	16x24
8	165192	Milan Sidedish Plate Medium	Black	170x170	-	16x24
9	165193	Milan Deep Plate Medium	White	170x170	350	8x12
10	165194	Milan Deep Plate Medium	Black	170x170	350	8x12
11	165195	Milan Dessert Plate Small	White	140x140	-	16x24
12	165196	Milan Dessert Plate Small	Black	140x140	-	16x24
13	165197	Milan Amuse Plate Extra Small	White	70x70	-	4x50
14	165198	Milan Amuse Plate Extra Small	Black	70x70	-	4x50



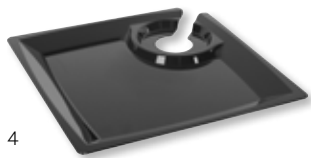
1



2



3



4



5



6



7



8



9



10



11



12



13



14



PLASTIC PLATES

Material: PS max +70°C
APET max +70°C

No.	Article	Description	Colour	Material	Size Ø (mm)	Qty/ Cart.
1	182859	Dinner Plate with flowers on rim	White	PS	220	10x50
2	182850	Dinner Plate Deep	White	PS	180	10x50
3	182852	Dinner Plate	Black	PS	220	10x50
4	182851	Dinner Plate	White	PS	220	10x50
5	182857	Lid for Dinner Plate, 4cm High	Transparent	APET	220	2x50
6	182853	Dinner Plate	White	PS	260	10x50
7	182854	Dinner Plate	Black	PS	260	10x50
8	182855	Dinner Plate 3 Comp.	White	PS	260	10x50
9	182856	Dinner Plate 3 Comp.	Black	PS	260	10x50
10	182858	Lid for Dinner Plate, 5cm High	Transparent	APET	260	2x50
11	163489	Dinner Plate Extra Strong	White	PS	230	6x20
12	152116	Dessert Plate	White	PS	180	10x50
13	461900	Egg Cup	White	PS	100	23x100
14	408500	Demo Plate	White	PS	100	23x150
15	170790	Cocktail Plate Extra Strong with Hole	Transparent	PS	200x200	1x10





ECO CUTLERY

- Made out of 100% renewable material
- Sturdy design

Material: CPLA max +70°C

ecoecho®

No.	Article	Description	Colour	Size (mm)	Qty/ Cart.
1	168642	Fork Large	White	185	10x100
2	168641	Knife Large	White	185	10x100
3	168643	Spoon Large	White	185	10x100
4	168851	Knife, Fork Large, White Napkin	White	185/185	1x250
5	162024	Fork Small	White	150	10x100
6	162023	Knife Small	White	150	10x100
7	162025	Spoon Small	White	150	10x100
8	161203	Knife, Fork Small, White Napkin	White	150/150	1x250

AMAZONICA

- Celebrate food, form and function
- Eco-conscious collection crafted from mindful materials
- Design by Bernadotte & Kylberg

ecoecho® **NEW**

Material: CPLA max +70°C



1 New 2 New 3 New 4 New

No.	Article	Description	Colour	Size Ø (mm)	Vol. (cl)	Qty/ Cart.
1	188073	CPLA Fork	White	190	-	10 x 50
2	188074	CPLA Knife	White	190	-	10 x 50
3	188075	CPLA Spoon	White	190	-	10 x 50
4	188076	CPLA Dessert spoon	White	125	-	10 x 50

FLAIR CUTLERY

- The ideal complement to silverware

Material: PS max +100°C



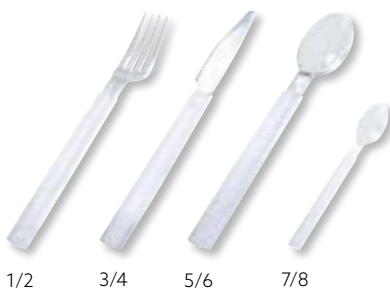
1 2 3
4 5 6

No.	Article	Description	Colour	Size (mm)	Qty/ Cart.
1	159729	Flair Fork	Silver	190	10x40
2	159728	Flair Knife	Silver	200	10x40
3	159730	Flair Spoon	Silver	190	10x40
4	163112	Flair Dessert Spoon	Silver	130	8x100
5	159731	Flair Mini Fork	Silver	110	50x40
6	159732	Flair Mini Spoon	Silver	110	50x40

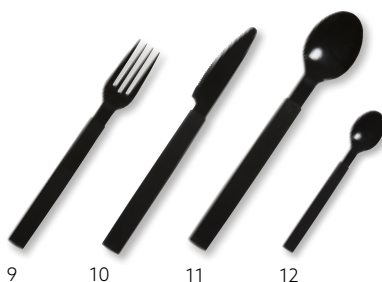
LIBRA CUTLERY

- Extra Sturdy design

Material: PS max +100°C



1/2 3/4 5/6 7/8



9 10 11 12

No.	Article	Description	Colour	Size (mm)	Qty/ Cart.
1	161189	Libra Fork	Transparent	190	20x12
2	161190	Libra Fork	Transparent	190	20x40
3	161191	Libra Knife	Transparent	190	20x12
4	161192	Libra Knife	Transparent	190	20x40
5	161193	Libra Spoon	Transparent	190	20x12
6	161194	Libra Spoon	Transparent	180	20x40
7	161195	Libra Coffee Spoon	Transparent	130	20x12
8	161196	Libra Coffee Spoon	Transparent	130	20x40
9	174133	Libra Fork	Black	190	20x40
10	174134	Libra Knife	Black	190	20x40
11	174135	Libra Spoon	Black	180	20x40
12	174136	Libra Coffee Spoon	Black	130	20x40

VICTORIA CUTLERY

• Sturdy design

Material: PS max +100°C



No.	Article	Description	Colour	Size (mm)	Qty/ Cart.
1	159726	Victoria Fork	Transparent	170	20x50
2	159725	Victoria Knife	Transparent	170	20x50
3	154866	Victoria Fork	Transparent	190	10x50
4	154865	Victoria Fork	Transparent	190	1x1000
5	154863	Victoria Knife	Transparent	190	10x50
6	154864	Victoria Knife	Transparent	190	1x1000
7	154867	Victoria Spoon	Transparent	190	10x50
8	154868	Victoria Spoon	Transparent	190	1x1000
9	154870	Victoria Dessert Spoon	Transparent	160	10x50
10	154869	Victoria Dessert Spoon	Transparent	160	1x1000



BBQ CUTLERY

• Perfect for outdoor parties

Material: PS max +100°C

No.	Article	Description	Colour	Size (mm)	Qty/ Cart.
1	168338	BBQ Fork	Pink	180	20x50
2	168334	BBQ Knife	Pink	180	20x50
3	168336	BBQ Fork	Blue	180	20x50
4	168332	BBQ Knife	Blue	180	20x50
5	168337	BBQ Fork	Green	180	20x50
6	168333	BBQ Knife	Green	180	20x50
7	168335	BBQ Fork	Yellow	180	20x50
8	168331	BBQ Knife	Yellow	180	20x50
9	168339	BBQ Fork	Black	180	20x50
10	168340	BBQ Knife	Black	180	20x50

GRAND & PETIT CUTLERY

Material: PS max +100°C



No.	Article	Description	Colour	Size (mm)	Qty/ Cart.
1	154857	Grand Fork	White	180	30x100
2	154856	Grand Knife	White	180	30x100
3	154928	Grand Spoon	White	180	30x100
4	149136	Grand Coffee Spoon	White	125	30x100
5	154861	Petit Fork	White	165	30x100
6	154860	Petit Knife	White	165	30x100
7	154862	Petit Spoon	White	165	30x100
8	143583	Petit Coffee Spoon	White	115	8x250
9	118957	Chips Fork	Assorted colours	90	5x1000
10	157184	Combi Fork	White	140	4x250



CUTLERY DISPENSERS

- Hygienic
- Secure stacking
- Practical
- Customisable box

Material: PS max +100°C



No.	Article	Description	Colour	Size (mm)	Qty/ Cart.
1	170891	Dispenser box Grand Fork	Black	180	8x150
2	170892	Dispenser box Grand Knife	Black	180	8x220
3	170893	Dispenser box Grand Spoon	Black	180	8x150
4	170894	Dispenser box Grand Coffee Spoon	Black	125	8x350
5	170895	Dispenser box BBQ Fork	Black	180	8x100
6	170896	Dispenser box BBQ Knife	Black	180	8x150
7	170897	Dispenser box BBQ Spoon	Black	180	8x100
8	170898	Dispenser box BBQ Coffee Spoon	Black	130	8x300





ECO CUTLERY PACKS

- Made out of 100% renewable resources
- Convenient and hygienic

Material: CPLA max +70°C

ecoecho®

No.	Article	Description	Colour	Size (mm)	Qty/ Cart.
1	161203	Knife, Fork, White Napkin	White	150/150	1x250
2	168851	Knife, Fork, White Napkin	White	185/185	1x250



PREMIUM CUTLERY PACKS

- Coloured Dunisoft® and tissue napkins
- Superior quality
- Convenient and hygienic
- Barcode on cutlery pack

Material: PS max +100°C



No.	Article	Description	Colour	Size (mm)	Qty/ Cart.
1	195004	Knife, Fork, Cream Dunisoft® Napkin	Transparent	190/180	300x1
2	169406	Knife, Fork, Spoon, White Napkin*	Transparent	190/180/170	1x250
3	195000	Knife, Fork, Green Napkin	White	160/160	250x1
4	195001	Knife, Fork, Black Napkin	White	160/160	250x1

* Cutlery pack without barcode

CUTLERY PACKS

- Convenient and hygienic
- Barcode on cutlery pack



Material: PS max +100°C



No.	Article	Description	Colour	Size (mm)	Qty/ Cart.
1	119007	Knife, Fork*	Transparent	190/185	1x600
2	164498	Knife, Fork*	White	165/165	250x1
3	111278	Knife, Fork, White Napkin	White	160/160	250x1
4	119025	Knife, Fork, Coffee Spoon, White Napkin	White	160/160/125	250x1
5	119026	Knife, Fork, Spoon, White Napkin	White	160/160/170	250x1
6	119030	Knife, Fork, Pepper/Salt, White Napkin	White	160/160	250x1
7	120616	Knife, Fork, Coffee Spoon, Pepper/Salt, White Napkin	White	160/160/125	250x1
8	111279	Knife, Fork, Spoon, Pepper/Salt, White Napkin	White	160/160/160	250x1
9	181880	Knife, Fork, White Napkin*	White	180/180	250x1
10	181881	Knife, Fork, Coffee Spoon, Pepper/Salt, White Napkin*	White	180/180/125	250x1

* Cutlery pack without barcode

CUTLERY SINGLE WRAPPED

- Convenient and hygienic



Material: PS max +100°C



No.	Article	Description	Colour	Size (mm)	Qty/ Cart.
1	169877	Soup Spoon	Transparent	165	250x1
2	153985	Knife	Transparent	195	250x1
3	153984	Fork	Transparent	195	250x1
4	153982	Spoon	Transparent	165	250x1
5	153983	Coffee Spoon	Transparent	125	250x1
6	135656	Soup Spoon	White	160	1000x1
7	135657	Fork	White	160	1000x1
8	158335	Coffee Spoon	White	125	1000x1

CHOPSTICKS



Material: Bamboo



No.	Article	Description	Colour	Size (mm)	Qty/ Cart.
1	169874	Chopsticks	Brown	203	20x100



CELEBRATION GLASSES

- The ideal complement to glassware
- Superb stability

Material: PS max +100°C

No.	Article	Description	Colour	Vol (ml)	Qty/ Cart.
1	165199	Celebration Champagne Glass	Transparent/Silver	150 (100)	12x12
2	165200	Celebration Wine Glass	Transparent/Silver	180 (100)	12x12
3	165201	Celebration Juice Glass	Transparent/Silver	300 (200)	12x12
4	168346	Celebration Dessert Cup	Transparent/Silver	80	6x100



1



2



3



4



PREMIUM GLASSES

- One-piece glasses – no assembly needed

Material: PS max +100°C

No.	Article	Description	Vol (ml)	Qty/ Cart.
1	159881	Millésime Wine Glass	120 (100)	76x12
2	159882	Millésime Wine Glass	180 (150)	60x10
3	159883	Millésime Wine Glass	200 (175)	51x10
4	159884	Millésime Wine Glass	230 (200)	45x10
5	155820	Wine Glass (one-piece)	230 (200/100)	6x18
6	101383	Wine Glass	240 (200)	20x12
7	120145	Champagne Glass (shrink-wrapped pack)	135 (100)	10x10
8	107002	Champagne Glass (display box)	135 (100)	10x10
9	119102	Château Liqueur Glass	50 (20/40)	75x12
10	121417	Château Wine Glass	170 (100)	60x12
11	149147	Diamond Juice Glass	250 (200)	35x30
12	119499	Bavaria Beer Glass	275 (200)	35x30
13	127732	Bavaria Beer Glass	450 (300)	28x22
14	159700	Longdrink Glass	200	48x10
15	119691	Longdrink Glass	280	50x10





Add a flexible finishing touch: we now offer profile printed stickers & adhesive sleeves that enable you to promote your brand on-the-go.





ECOECO® CRYSTAL GLASSES

- High content from recycled plastic bottles
- Excellent clarity heightens appeal of food and drinks
- Strong flexibility minimises risk of breakages
- Print directly on the glass or attach a personalised sticker



Material: rPET 70°C

ecoeco®



No.	Article	Description	Colour	Volume (ml)	Qty/ Cart.
1	188000	Crystal Glass	Transparent	300 (0,25l)	25x65
2	188001	Crystal Glass	Transparent	270	16x60
3	188002	Crystal Glass	Transparent	360	16x60
4	188003	Crystal Glass Insert for 188001 / 188002	Transparent	120	16x30
5	188013	Crystal Glass Insert for 188001 / 188002	Transparent	180	16x30
6	188004	Crystal Glass	Transparent	410 (0,3l)	16x50
7	188005	Crystal Glass	Transparent	470 (0,4l)	16x50
8	188006	Crystal Glass	Transparent	590 (0,5l)	16x50
9	188014	Crystal Glass Insert for 188004 / 188005 / 188006	Transparent	250	16x50
10	188007	Flat Lid (w cross) for 188000	Transparent	-	24x65
11	188008	Dome Lid (w hole) for 188000	Transparent	-	24x65
12	188009	Flat Lid (w cross) for 188001 / 188002	Transparent	-	16x60
13	177996	Flat lid (w/o hole) for 188001 / 188002	Transparent	-	16x60
14	177997	Dome lid (w/o hole) for 188001 / 188002	Transparent	-	16x60
15	188010	Dome Lid (w hole) for 188001 / 188002	Transparent	-	16x60
16	188011	Flat Lid (w cross) for 188004 / 188005 / 188006	Transparent	-	20x50
17	177998	Flat Lid (w/o hole) for 188004 / 188005 / 188006	Transparent	-	20x50
18	188012	Dome Lid (w hole) for 188004 / 188005 / 188006	Transparent	-	20x50





PLA GLASSES

- Compostable
- Made out of 100% renewable resources
- Superb transparency

Material: PLA max +40°C



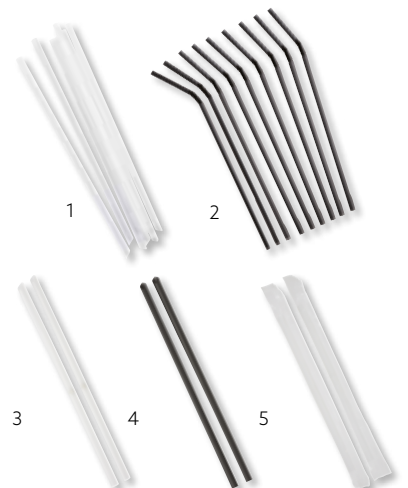
No.	Article	Description	Vol (ml)	Qty/ Cart.
1	157857	Glass	160	20x50
2	157858	Glass	250 (0,2l)	20x50
3	159717	Glass (hygiene packed)	250	1x500
4	157859	Glass	390 (0,3l)	20x50
5	157860	Glass	580 (0,42l)	16x40
6	157862	Flat Lid (w cross) for 157860	-	16x80
7	158631	Dome Lid (w hole) for 157860	-	6x40



STRAWS

Material: PP max +70°C
PLA max +40°C (ecoecho®)

No.	Article	Description	Material	Colour	Size (mm)	Qty/ Cart.
1	153763	Straw	PLA	Transparent	210	100x100
2	155763	Straw with Flex	PP	Black	210	8x250
3	188016	Smoothie Straw	PP	Transparent	230	20x300
4	188017	Smoothie Straw	PP	Black	230	20x300
5	166560	Smoothie Straw (hygiene packed)	PP	Transparent	210	40x100





TREND GLASSES

Material: PS max +100°C
APET max +70°C



No.	Article	Description	Material	Vol (ml)	Qty/ Cart.
1	516301	Trend Shotglass	PS	50 (0,02/0,04l)	20x50
2	156406	Trend Glass	PS	100	20x50
3	155729	Trend Glass	PS	120 (0,1l)	20x50
4	153395	Trend Glass	PS	160	20x50
5	153396	Trend Glass	PS	250 (0,2l)	20x50
6	153397	Trend Glass	PS	300 (0,25l)	20x50
7	153398	Trend Glass	PS	390 (0,3l)	20x50
8	153399	Trend Glass	PS	620 (0,5l)	16x25
9	157175	Insert for 153397/153398	PS	180	20x50
10	163485	Flat Lid (w cross) for 153395/153396	PS	-	10x100
11	153413	Flat Lid (w cross) for 153397/153398	APET	-	10x100
12	157174	Flat Lid (w cross) for 153399	APET	-	16x80
13	157177	Flat Lid for (w/o cross) for 153397/153398	APET	-	20x50
14	157178	Flat Lid for (w/o cross) for 153399	APET	-	20x50
15	167607	Dome Lid (w hole) for 153397/153398	APET	-	12x50
16	169210	Dome Lid (w/o hole) for 153397/153398	APET	-	12x50
17	167608	Dome Lid (w hole) for 153399	APET	-	20x50
18	167609	Dome Lid (w/o hole) for 153399	APET	-	20x50



GLASSES

Material: PS max +100°C
PP max +120°C

No.	Article	Description	Material	Vol (ml)	Qty/ Cart.
1	141242	Shotglass	PS	30	25x50
2	111251	Crystallo Liqueur Glass	PS	50 (0,04l)	60x20
3	149146	Crystallo Wine Glass	PS	185 (0,15l)	60x15
4	127730	Crystallo Coupe Glass	PS	65	85x40
5	127731	Lid for 127730	PS	-	1x3400
6	127726	Crystallo Juice Glass	PS	200 (0,15l)	45x30
7	111258	Crystallo Juice Glass	PS	240 (0,2l)	41x30
8	127724	Crystallo Coupe Glass	PS	260 (0,2l)	24x20
9	111255	Flat Lid for 127724	PS	-	20x100
10	118890	Dome Lid for 127724	PS	-	25x20
11	507200	Tourmaline Shot Glass	PS	100 (0,07l)	20x50
12	149149	Tourmaline Juice Glass	PS	240 (0,2l)	25x40
13	149150	Tourmaline Juice Glass	PS	310 (0,25l)	15x40
14	127727	Juice Glass	PS	225 (0,15l)	20x40
15	119484	Drinkspout for 127727	PS	-	2x500
16	127729	Juice Glass	PS	265	45x30
17	116990	Sorbet Glass	PS	200	1x150
18	159401	Sorbet Glass (crush proof)	PP	200	1x150
19	168344	BBQ Glass Pink	PS	240 (0,2l)	10x50
20	168342	BBQ Glass Blue	PS	240 (0,2l)	10x50
21	168343	BBQ Glass Green	PS	240 (0,2l)	10x50
22	168341	BBQ Glass Yellow	PS	240 (0,2l)	10x50





CLEAN AND HYGIENIC

Single wrapped glasses are ideal for areas with high hygiene requirements like bathrooms. Discover our full coaster assortment by downloading our Table Top catalogue.



BASIC HYGIENE PACKED GLASSES

Material: PS max +100°C
PP max +90°C

No.	Article	Description	Material	Vol (ml)	Qty/ Cart.
1	149148	Tourmaline Juice Glass (hygiene packed)	PS	240 (0,2l)	1050x1
2	172697	Hygiene packed glass	PP	240	1400x1



FESTIVAL GLASSES

• Flexible material to avoid breakage

Material: PP max +100°C

No.	Article	Description	Vol (ml)	Qty/ Cart.
1	154744	Beer Glass	400 (0,3l)	20x50
2	154745	Beer Glass	500 (0,4l)	20x40
3	154743	Beer Glass	630 (0,4/0,5l)	14x50





NEWURBAN ECOECHO®
COFFEE CUPS**URBAN COFFEE CUPS**

- Ideal for café's, juice bars, gyms etc
- Compostable cups and lids
- Choice of different sizes
- First ever black ecoecho® lids

Material: PAP/PLA max +100°C
CPLA max +100°C

ecoecho®

**NEW**

No.	Article	Description	Colour	Material	Vol (ml)	Qty/ Cart.
1	182572	Urban Coffee Cup ecoecho®	Printed	PAP/PLA	80	20x50
2	182573	Urban Coffee Cup ecoecho®	Printed	PAP/PLA	120	20x50
3	182574	Urban Coffee Cup ecoecho®	Printed	PAP/PLA	180	20x40
4	182575	Urban Coffee Cup ecoecho®	Printed	PAP/PLA	240	20x40
5	182576	Urban Coffee Cup ecoecho®	Printed	PAP/PLA	350	16x50
6	182577	Urban Coffee Cup ecoecho®	Printed	PAP/PLA	470	16x35
7	182581	Lid for 182574/182575	White	CPLA	-	20x40
8	182582	Lid for 182576/182577	White	CPLA	-	16x50
9	182570	Lid for 182574/182575	Black	CPLA	-	20x40
10	182571	Lid for 182576/182577	Black	CPLA	-	16x50





ECO TRIPLE WALL CUPS

- Compostable cups and lids
- Sturdy triple wall design
- Vented lids for steam release

Material: PAP/PBS max +100°C
CPLA max +100°C

ecoecho®



No.	Article	Description	Colour	Material	Vol (ml)	Qty/ Cart.
1	161197	Triple Wall Cup	Brown	PAP/PBS	240	20x25
2	161198	Triple Wall Cup	Brown	PAP/PBS	350	12x30
3	161199	Triple Wall Cup	Brown	PAP/PBS	470	12x20
4	159709	Triple Wall Cup	Printed	PAP/PBS	240	20x25
5	159710	Triple Wall Cup	Printed	PAP/PBS	350	12x30
6	159711	Triple Wall Cup	Printed	PAP/PBS	470	12x20
7	159712	Lid for 159709/161197	White	CPLA	-	20x50
8	159713	Lid for 159710/159711/ 161198/161199	White	CPLA	-	25x50



ECO DOUBLE WALL CUPS

- Made out of 100% renewable resources
- Compostable cups and lids
- Sturdy double wall design
- Vented lids for steam release

Material: PAP/PLA max +100°C
CPLA max +100°C

ecoecho®



No.	Article	Description	Colour	Material	Vol (ml)	Qty/ Cart.
1	170701	Double Wall Cup	Printed	PAP/PLA	240	20x40
2	170730	Double Wall Cup	Printed	PAP/PLA	350	16x35
3	170731	Double Wall Cup	Printed	PAP/PLA	470	16x35
4	170636	Lid for 170701	White	CPLA	-	20x40
5	170637	Lid for 170730/170731	White	CPLA	-	16x50



ECO HOT DRINK CUPS

- Compostable cups and lids
- Vented lids for steam release

Material: PAP/PBS max +100°C
CPLA max +100°C

ecoecho®



No.	Article	Description	Colour	Material	Vol (ml)	Qty/ Cart.
1	159924	Eco Hot Drink Cup	Printed	PAB/PBS	120	20x50
2	159706	Eco Hot Drink Cup	Printed	PAB/PBS	240	20x50
3	159707	Eco Hot Drink Cup	Printed	PAB/PBS	350	16x50
4	159708	Eco Hot Drink Cup	Printed	PAB/PBS	470	16x35
5	159712	Lid for 159706	White	CPLA	-	20x50
6	159713	Lid for 159707/159708	White	CPLA	-	25x50



ECO THANK YOU CUPS

- Made out of 100% renewable resources
- Compostable cups and lids
- Vented lids for steam release

Material: PAP/PLA max +100°C
CPLA max +100°C

ecoecho®



No.	Article	Description	Colour	Material	Volume (ml)	Qty/Cart.
1	170633	Thank You Cup	Printed	PAP/PLA	120	36x45
2	182847	Thank You Cup	Printed	PAP/PLA	180	20x40
3	170634	Thank You Cup	Printed	PAP/PLA	240	20x40
4	170635	Thank You Cup	Printed	PAP/PLA	350	16x50
5	176384	Thank You Cup	Printed	PAP/PLA	470	16x50
6	170636	Lid for 182847/170634	White	CPLA	-	20x40
7	170637	Lid for 170635 / 176384	White	CPLA	-	16x50



CIRCUIT COFFEE-TO-GO CUPS

- Cost-effective solution for design lovers
- Sizes for every need with matching PS lids
- PE lamination
- Reclosable flip plug prevents leaks

Material: PAP/PE max +100°C
PS max +100°C



NEW

No	Article	Description	Colour	Material	Vol (ml)	Qty/ Cart.
1	183683	Circuit cup	Printed	PAP/PE	80	20 x 50
2	181835	Circuit cup	Printed	PAP/PE	120	36 x 45
3	181855	Circuit cup	Printed	PAP/PE	180	20 x 50
4	181836	Circuit cup	Printed	PAP/PE	240	20 x 40
5	181837	Circuit cup	Printed	PAP/PE	350	16 x 50
6	181838	Circuit cup	Printed	PAP/PE	470	16 x 35
7	181833	Lid for 181855/181836	Black	PS	-	20 x 40
8	181839	Lid for 181837/181838	Black	PS	-	16 x 50
9	163600	Lid for 181835	Transparent	PS	-	10 x 100
10	181856	Lid for 181855/181836	White	PS	-	20 x 40
11	181857	Lid for 181837/181838	White	PS	-	16 x 50



CAFÉ IZZA CUPS

- Matching FSC®-certified napkins available
- Vented lids for steam release

Material: PAP/PE max +100°C
 PS max +100°C
 Tissue



No.	Article	Description	Colour	Material	Vol (ml)	Qty/ Cart.
1	168304	Izza Napkin, 3-ply, 24 x 24 cm	Printed	Tissue	-	8x250
2	168520	Dispenser Napkin, 1-ply, 33 x 33 cm	Printed	Tissue	-	6x750
3	168519	Dispenser Napkin, 1-ply, 33 x 32 cm	Brown	Tissue	-	6x750
4	170740	Café Izza Black Cup	Printed	PAP/PE	120	36x45
5	170741	Café Izza Black Cup	Printed	PAP/PE	240	20x40
6	170750	Café Izza Black Cup	Printed	PAP/PE	350	16x50
7	170631	Lid for 170741	White	PS	-	20x40
8	170632	Lid for 170750	White	PS	-	16x50
9	171427	Lid for 170741	Black	PS	-	20x40
10	171428	Lid for 170750	Black	PS	-	16x50
11	168867	Napkin Dispenser	Matt Black	Metal	-	



COFFEE QUICK CUPS

- Vented lids for steam release

Material: PAP/PE max +100°C
 PS max +100°C



No.	Article	Description	Colour	Material	Vol (ml)	Qty/ Cart.
1	163516	Coffee Quick Cup with Handle	Printed	PAP/PE	80	20x50
2	159920	Coffee Quick Cup	Printed	PAP/PE	120	16x80
3	163517	Coffee Quick Cup	Printed	PAP/PE	200	20x80
4	159921	Coffee Quick Cup	Printed	PAP/PE	240	20x50
5	159922	Coffee Quick Cup	Printed	PAP/PE	350	16x50
6	159923	Coffee Quick Cup	Printed	PAP/PE	470	16x35
7	163600	Lid for 159920	Transparent	PS	-	10x100
8	163601	Lid for 163517	Transparent	PS	-	20x100
9	169922	Lid for 159921	White	PS	-	10x100
10	169923	Lid for 159922/159923	White	PS	-	10x100
11	169924	Lid for 159921	Black	PS	-	10x100
12	169925	Lid for 159922/159923	Black	PS	-	10x100





HOT DRINK CUPS

Material: PAP/PE max +100°C
PS max +100°C

No.	Article	Description	Colour	Material	Vol (ml)	Qty/ Cart.
1	153760	Café Stripe Cup	Printed	PAP/PE	200	30x75
2	153759	Café Flower Cup with Handle	Printed	PAP/PE	200	20x80
3	778206	Paper Cup with Handle	White	PAP/PE	200	20x80
4	100514	Paper Cup	White	PAP/PE	200	30x75
5	163601	Lid for 153759/778206	Transparent	PS	-	20x100



THERMO CUPS

- Lids with pull-back opening for secure transport
- Venting lids for steam release

Material: EPS/PS max +100°C



No.	Article	Description	Material	Vol (ml)	Qty/ Cart.
1	152118	Thermo Cup	EPS	190	40x25
2	152112	Lid for 152118	PS	-	10x100
3	152119	Thermo Cup	EPS	230	40x25
4	152113	Lid for 152119	PS	-	10x100
5	152120	Thermo Cup	EPS	300	20x25
6	152114	Lid for 152120	PS	-	10x100
7	152121	Thermo Cup	EPS	330	20x25
8	152115	Lid for 152121	PS	-	10x100



PLASTIC COFFEE CUPS

Material: PS max +70°C

No.	Article	Description	Colour	Vol (ml)	Qty/ Cart.
1	116991	Coffee Cup with Handle	White	80	20x25
2	660389	Coffee Cup with Handle	White	170	33x25
3	118245	Coffee Cup with Handle	White	250	40x25
4	119503	Coffee Cup with Handle	White	370	24x20
5	153779	Coffee Cup with Handle	White/Brown	180	16x50
6	153778	Coffee Cup with Handle	White/Brown	210	16x50
7	153780	Coffee Cup with Handle	White	210	16x50



COFFEE CUPS & CUP HOLDERS

Material: PS max +70°C

No.	Article	Description	Colour	Material	Vol (ml)	Qty/ Cart.
1	100191	Coffee Cup Combi	White	PS	210	25x80
2	91892	Holder for Coffee Cup Combi	Blue	PP	-	15x10
3	91893	Holder for Coffee Cup Combi	Bordeaux	PP	-	15x10



PLASTIC CUPS

Material: PS max +70°C

No.	Article	Description	Colour	Vol (ml)	Qty/ Cart.
1	103538	Wall Dispenser One-O-Matic for 401300	White/Transparent	-	6x1
2	103539	Wall Dispenser One-O-Matic for Cups 21cl	White/Transparent	-	6x1
3	127740	Cup	White/Brown	210	20x100
4	402900	Economy Cup	White	210	20x100
5	402500	Cup	White	210	20x100
6	402600	Cup	White	210	20x100
7	401300	Cup	White	120	50x80







TAKE-AWAY BAGS

Material: Paper



No.	Article	Description	Material	Colour	Size (mm)	Vol (l)	Qty/ Cart.
1	174730	Take-away Bag without handles	Paper	Brown	180x110x265	5	1x500
2	169875	Take-away Bag	Paper	Brown	350x170x245	15	1x200
3	169876	Take-away Bag	Paper	White	350x170x245	15	1x200

CARRY BAG

- Frees hands
- Protects clothes
- On-trend design



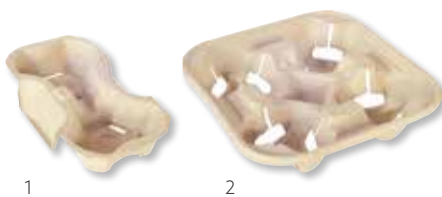
Material: HDPE



No.	Article	Description	Colour	Size Ø (mm)	Vol (l)	Qty/ Cart.
1	172528	Carry Bag 2 pcs with tear-off function	Transparent	350x270	2 pcs x 1,4 l	1x1000

GLASS & CUP HOLDERS

Material: Fibre



No.	Article	Description	Colour	Qty/ Cart.
1	169881	Cup Holder, 2 Glasses/Cups	Brown	2x200
2	169882	Cup Holder, 4 Glasses/Cups	Brown	4x75

PAPER CUP SLEEVES

NEW

Material: Cardboard



No.	Article	Description	Colour	Qty/ Cart.
1	180317	Sleeve for paper cups 24 cl	Brown	40x25
2	180315	Sleeve for paper cups 35/47 cl	Brown	40x25

STIRRERS

- Practical
- Hygienic

Material: PS max +100°C
Wood max +100°C



No.	Article	Description	Colour	Material	Size LxWxH (mm)	Qty/ Cart.
1	160391	Hygiene packed wooden stirrers	Beige	Wood	110	50x100
2	163001	Dispenser box with wooden stirrers	Beige	Wood	110	6x2000
3	176975	Bulk packed wooden stirrers	Beige	Wood	140	5x2000
4	153522	Dispenser box with stirrers	White	PS	110	6x2000
5	153523	Bulk packed stirrers	White	PS	110	5x1000



CONDIMENTS



No.	Article	Description	Size (mm)	Qty/ Cart.
1	163513	Creamer Tube 2,5g	100x10	1x3000
2	163514	Sugar 3,5g	100x10	1x3000
3	121998	Salt/Pepper Cruet set 0,3/3g	50x30x50	1x220
4	163515	Salt/Pepper twinpack 1&0,2g	70x40	1x5000



1



2



3



4

ACCESSORIES



No.	Article	Description	Size (mm)	Qty/ Cart.
1	353830	Dental Stick	50	6x1000
2	778092	Dental Stick	50	3x3000
3	119193	Refreshing Towel Lemon Scented	70x50	1x1000
4	119194	Refreshing Towel	70x50	1x1000
5	142981	Dispenser Box with Refreshing Towels Lemon Scented	70x50	6x250
6	163512	Disinfecting Towel	70x50	1x3000
7	179622	Wet Towel Cleansing, Kraft	170x200	1x500
8	179621	Wet Towel Cleansing, By the Sea	170x200	1x500



1



2



3



4



5



6



7



8

SERVING PLATTERS WITH LIDS

- Excellent display of the food on the buffet
- Clear, tight lids perfect for transportation
- Made of recycled PET-material

Material: rPET max +70°C
APET max +70°C

ecoecho®



No.	Article	Description	Colour	Material	Size (mm) LxWxH	Qty/ Cart.
1	151894	Serving Platter, Oval	Silver	APET	450x285	13x2
2	151895	Serving Platter, Octagonal	Silver	APET	Ø310	10x2
3	159794	Serving Platter, Octagonal	Black	rPET	300x300x30	1x50
4	159798	Lid for 159794	Transparent	rPET	300x300x50	1x50
5	159795	Serving Platter, Octagonal	Black	rPET	360x240x30	1x50
6	159799	Lid for 159795	Transparent	rPET	360x240x50	1x50
7	159796	Serving Platter, Octagonal	Black	rPET	460x300x30	1x50
8	159800	Lid for 159796	Transparent	rPET	460x300x60	1x50
9	159797	Serving Platter, Rectangular	Black	rPET	460x300x30	1x50
10	159801	Lid for 159797	Transparent	rPET	460x300x60	1x50



1



2



3



4



5



6



7



8



9



10



1



2

1/1 GN TRAY

Material: PP max +120°C (microwarmable)
APET max +70°C



No.	Article	Description	Material	Colour	ml	Size (mm) LxWxH	Qty/ Cart.
1	166027	1/1 GN Tray	PP	Black	8175	530x325x60	1x48
2	166026	Lid for 166027	APET	Transparent	-	530x325x30	1x32

SERVING PLATTERS OVAL

Material: ALU max +250°C



No.	Article	Description	Colour	Size (mm) LxWxH	Qty/ Cart.
1	150400	Serving Platter, Oval	Silver	330x230x30	10x8
2	150401	Serving Platter, Oval	Silver	450x300x30	10x5
3	150402	Serving Platter, Oval	Silver	550x360x30	8x5



1-3



1-4



5-6



7

8



9

COFFEE FILTERS

Material: Paper

No.	Article	Description	Colour	Model	Type	Diameter Base (mm)	Diameter Flat (mm)	Qty/ Cart.
1	506507	Brewmatic Bowl Coffee Filter, 10 l	White	457/203	Bowl	Ø 203	457	1x500
2	506509	Brewmatic Bowl Coffee Filter, 24 l	White	550/203	Bowl	Ø 203	550	1x500
3	506501	Brewmatic Bowl Coffee Filter, 1,8 l	White	90/250	Bowl	Ø 90	250	4x250
4	506502	Brewmatic Bowl Coffee Filter, 1,8 l	White	110/250	Bowl	Ø 110	250	4x250
5	506511	Brewmatic Bowl Coffee Filter, 1,8 l	Brown	90/250	Bowl	Ø 90	250	4x250
6	506512	Brewmatic Bowl Coffee Filter, 1,8 l	Brown	110/250	Bowl	Ø 110	250	4x250
7	506504	Bag Coffee Filter, 1 l	White	No4	Bag	190x150	100	5x200
8	506514	Bag Coffee Filter, 1 l	Brown	No4	Bag	190x150	100	5x200
9	506515	Coffee Filter Pyramid, 1,8 l	White	202s	Pyramid	260x160	180	5x100

COOKING BAGS

- Suitable for sous-vide cooking

Material: PE max +120°C

No.	Article	Description	Colour	Size (mm) LxWxH	Qty/ Cart.
1	162016	Cooking Bag, 1,5l	Transparent	200x300	1x1000
2	162017	Cooking Bag, 2,5l	Transparent	250x350	1x1000
3	162018	Cooking Bag, 6,0l	Transparent	320x450	1x500
4	162019	Cooking Bag, 10,5l	Transparent	350x550	1x500



1

2



3

4



PLASTIC, ALUMINIUM FOIL AND DISPENSERS

Material: ALU max +250°C
PE max +100°C
PVC max +100°C

No.	Article	Description	Material	Size WxL	Qty/ Cart.
1	716000	Pre-perforated Clingfilm (1600pcs)	PVC	30 cm x 480 m	6x1
2	716100	Pre-perforated Clingfilm (1100pcs)	PVC	40 cm x 440 m	6x1
3	716500	Clingfilm in Dispenser Box with Cutter	PVC	30 cm x 300 m	6x1
4	716510	Refill Clingfilm to dispenser Box with cutter	PVC	30 cm x 300 m	3x1
5	716520	Clingfilm in Dispenser Box with Cutter	PE	30 cm x 300 m	6x1
6	716600	Clingfilm in Dispenser Box with Cutter	PVC	45 cm x 300 m	6x1
7	716610	Refill Clingfilm to Dispenser Box with Cutter	PVC	45 cm x 300 m	3x1
8	716620	Clingfilm in Dispenser Box with Cutter	PE	45 cm x 300 m	6x1
9	717101	Dispenser for Clingfilm & Foil	Steel	30 cm	1x1
10	717103	Dispenser for Clingfilm & Foil	Steel	45 cm	1x1
11	719200	Foil in Dispenser with Cutter	ALU	30 cm x 150 m	6x1
12	719400	Foil in Dispenser with Cutter	ALU	45 cm x 150 m	6x1
13	719210	Refill Foil to Dispenser Box with Cutter	ALU	30 cm x 150 m	3x1
14	719410	Refill Foil to Dispenser Box with Cutter	ALU	45 cm x 150 m	3x1
15	719300	BBQ Foil in Dispenser Box with cutter	ALU	45 cm x 150 m	6x1





DUNIFORM[®]
SINCE 1977

SMARTER IN-HOUSE PACKAGING

Good food deserves good packaging. With this in mind, we developed our unique 'one-stop-shop' Duniiform[®] concept. This combines sealing machines, trays, sealing films, transport solutions and service and support.



You simply choose the solution that's best for your business at any given time. Even better, unlike off-the-shelf alternatives, Duniform® products are designed to work together. This means optimal convenience for you – and a great experience for your guests. Keep an eye out for exciting new packaging concepts in our Duniform® range.

PROFESSIONAL IN-HOUSE PACKAGING MADE EASY



Win over eco-conscious customers by using packaging that cares for the environment.



Get a top-quality sealing machine that suits your needs, whether you are a local deli or an industrial-scale HMR company.



Select a tray for frozen, chilled or warm food from a wide choice of formats and top-quality materials.



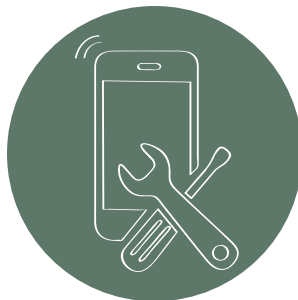
Customise your films to stand out and turn your packaging into a promotional tool.



Show your food at its best and ensure a leak-free, secure fit with crystal-clear films.



Extend the shelf-life of your food, make planning easier and minimise wasted ingredients.



Receive dedicated local support for the lifetime of your solution, covering technical service, expert guidance and even training.



Ensure your food arrives in tip-top condition and simplify delivery with thermo-bags and boxes, temperature control equipment and trolleys.

The Duniform® one-stop-shop concept has set the standard for simple, smart in-house packaging. Over time, it has helped to drive success for many leading hotels, restaurants, MSR companies, caterers, and retailers.

Unlike off-the-shelf solutions

Different to many alternatives, all Duniform® products are designed to work together. That means you get optimal convenience and your customers get a consistently great experience. What's more there are no complicated ordering hassles.

Tailored to your business needs

Another big advantage of the Duniform concept is the way it matches – and grows with – your business. With such a wide choice of machines, materials and trays available you can always get exactly the right solution for your needs.

Eco-conscious materials

The Duniform® concept includes many innovative, eco-conscious materials, such as bioplastic. These not only offer top-level performance and practicality; they also send an attractive message about your business to your customers.

A flexible finishing touch

The sealing films for Duniform® can be customised for an added personal touch. Now we even offer profile printed stickers & sleeves that enable you to promote your brand on-the-go.



A WORD FROM OUR CLIENTS



"The design is important to me and my customers. So are sustainable materials and the smart filling functionality."

Mathias Pilblad,
Meatballs for the People



"Duniform® trays have a quality look and feel. Our guests definitely appreciate them."

Manh Phan Hien,
owner of Zen Thai



"Duniform® bioplastic trays are a very good choice for us. They allow us to increase the number of sustainable products we use."

Magnus Lingvörn,
Head chef at the Mathildenberg kitchen



MINDFUL MODERN PACKAGING

You can present your entire offering as sustainable with elegant bioplastic trays – without ever having to compromise on functionality, flexibility and style. They offer performance of PP – yet are fully recyclable.



BIOPLASTIC CATER LINE TRAYS

- Eco-conscious trays
- Sealable using standard PP film
- Suitable for both hot and cold food
- Vacuum and MAP applicable

Material: Bioplastic -20°C to +120°C.
Temp (Time): +120°C <60min, +100°C <120min, +70°C <240min, +40°C <10days

ecoecho®



No	Article	Description	Comp	Colour	Cassette DF10/20*	Size LxWxH (mm)	Volume (ml)	Qty/Cart.
1	175298	Cater Line Tray	1	White	140162	227x178x32	920	1x216
2	175299	Cater Line Tray	1	White	140162	227x178x40	1115	1x216
3	173718	Cater Line Tray	1	White	140162	227x178x50	1345	1x216
4	173719	Cater Line Tray	2	White	159176	227x178x50	645/540	1x216
5	173720	Cater Line Tray	3	White	159177	227x178x50	530/325/235	1x216

*No. 1,-3 DF15/25 cassette, 153432 (2 cav.) also available
No. 4 DF15/25 cassette, 163449 (2 cav.) also available
No. 5 DF15/25 cassette, 163450 (2 cav.) also available



BIOPLASTIC TAKE-AWAY TRAYS

- Eco-conscious trays
- Sealable using standard PP film
- Suitable for both hot and cold food
- Vacuum and MAP applicable

Material: Bioplastic -20°C to +120°C
Temp (Time): +120°C (1 h), +70°C(4h), +40°C (10 days), -20°C (unlimited)

ecoecho®



No	Article	Description	Comp	Colour	Cassette DF10/20*	Size LxWxH (mm)	Vol (ml)	Qty/Cart.
1	171149	Take-Away Tray	1	White	150020	250x159x43	1100	1x246
2	171150	Take-Away Tray	2	White	150021	250x159x45	700/400	1x246
3	171151	Take-Away Tray	3	White	150022	250x159x48	550/350/200	1x246

*No. 1 DF15 / DF25 cassette, 165911 (2 cav.) also available.
No. 2 DF15 / DF25 cassette, 182975 (2 cav.) also available.
No. 3 DF15 / DF25 cassette, 173050 (2 cav.) also available.



CARDBOARD/PE TRAYS

- No sealing film needed
- Suitable for both hot and cold food
- FSC®-certified cardboard
- Clear window

Material: Cardboard/PE ±0°C to +100°C, hot fill & microwarmable.
Temp (Time): MW <15min, chilled <3 days



No	Article	Description	Colour	Cassette DF10/20	Size LxWxH (mm)	Vol (ml)	Qty/Cart.
1	162678	Sandwich Tray	Brown	160054 DF10 (2 cav.)	170x75x90	570	1x500
2	162679	Cardboard Tray	Brown	160053	115x115x50	550	1x250
3	162680	Cardboard Tray	Brown	160051	200x120x45	900	1x250
4	162681	Cardboard Tray	Brown	160050	165x165x45	1000	1x250
5	162682	Cardboard Tray	Brown	161267	195x165x45	1200	1x250



CARDBOARD/PET MENU TRAYS

- High temperature resistance
- Combine with PET or universal sealing film

Material: Cardboard/PET -20°C to +220°C
Temp (Time): +220°C (1h), +70°C (2h), -20°C (unlimited)



No.	Article	Description	Colour	Cassette DF10/20	Size LxWxH (mm)	Vol (ml)	Qty/Cart.
1	173081	Cardboard Tray	White	140162*	227x177x40	1000	1x300
2	173082	Cardboard Tray	White	140163	186x136x35	550	1x560
3	173083	Cardboard Tray	White	140163	186x136x45	720	1x520

*No. 1 DF 15/DF25 cassette, 153432 (2 cav.) also available





CPET MENU TRAYS

- These CPET trays now contain 60% recycled material



Material: CPET -40°C to +220°C.
Temp (Time): +220°C <30min, +200°C <60min, +70°C <120min, +40°C 10days

ecoecho®



No	Article	Description	Comp	Colour	Cassette	Size LxWxH (mm)	Volume (ml)	Qty/ Cart.
1	115495	Menu Tray, ecoecho®	1	Black	140162 DF10/20, 153432 DF15/25 (2 cav.)	225x175x34	960	1x300
2	115494	Menu Tray, ecoecho®	1	White	140162 DF10/20, 153432 DF15/25 (2 cav.)	225x175x34	960	1x300
3	122018	Menu Tray, ecoecho®	1	Black	140162 DF10/20, 153432 DF15/25 (2 cav.)	225x175x43	1200	1x300
4	115503	Menu Tray, ecoecho®	1	White	140162 DF10/20, 153432 DF15/25 (2 cav.)	225x175x43	1200	1x300
5	153414	Menu Tray, ecoecho®	1	Black	140162 DF10/20, 153432 DF15/25 (2 cav.)	225x175x54	1500	1x270
6	153422	Menu Tray, ecoecho®	1	White	140162 DF10/20, 153432 DF15/25 (2 cav.)	225x175x54	1500	1x270
7	151305	Menu Tray, ecoecho®	2	Black	140160 DF10/20, 153433 DF15/25 (2 cav.)	225x175x35	515/370	1x250
8	151306	Menu Tray, ecoecho®	2	White	140160 DF10/20, 153433 DF15/25 (2 cav.)	225x175x35	515/370	1x250
9	115505	Menu Tray, ecoecho®	2	Black	140160 DF10/20, 153433 DF15/25 (2 cav.)	225x175x43	655/455	1x300
10	115504	Menu Tray, ecoecho®	2	White	140160 DF10/20, 153433 DF15/25 (2 cav.)	225x175x43	655/455	1x300
11	151307	Menu Tray, ecoecho®	3	Black	140158 DF10/20, 152440 DF15/25 (2 cav.)	225x175x34	430/225/165	1x250
12	151728	Menu Tray, ecoecho®	3	White	140158 DF10/20, 152440 DF15/25 (2 cav.)	225x175x34	430/225/165	1x250
13	115506	Menu Tray, ecoecho®	3	Black	140158 DF10/20, 152440 DF15/25 (2 cav.)	225x175x43	525/275/205	1x300
14	132346	Menu Tray, ecoecho®	3	White	140158 DF10/20, 152440 DF15/25 (2 cav.)	225x175x43	525/275/205	1x300
15	147599	Menu Tray	3	Black	147600 DF10/20	225x175x43	220/220/560	1x300



PP LIDS FOR 1-COMP MENU TRAYS

Material: PP -20°C to +100°C.
Temp (Time): +100°C <120min, +70°C <120min, +40°C <10days

No	Article	Description	Colour	Size LxWxH (mm)	Qty/ Cart.
1	159110	Lid for 1-comp CPET Menu Trays	Transparent	225x175x10	1x300
2	175803	Lid for CPET Menu Trays	Transparent	225x180x13	1x200



CPET SMALL PORTION TRAYS

• 60% recycled material in ecoecho[®] articles

Material: CPET -40°C to +220°C

Temp (Time): +220°C (2h), +70°C (2h), +40°C (10days), -40°C (unlimited)



No.	Article	Description	Colour	Cassette DF10/20	Size LxWxH (mm)	Vol (ml)	Qty/Cart.
1	157356	Small Portion Tray	Black	182540 (2 cav.)	160x103x35	370	1x750
2	115483	Small Portion Tray, ecoecho [®]	Black	140249 (2 cav.)	171x127x35	510	1x900
3	115482	Small Portion Tray, ecoecho [®]	White	140249 (2 cav.)	171x127x35	510	1x900
4	148217	Small Portion Tray, ecoecho [®]	Black	140249 (2 cav.)	171x127x50	670	1x840
5	151221	Small Portion Tray, ecoecho [®]	White	140249 (2 cav.)	171x127x50	670	1x840
6	151304	Small Portion Tray, ecoecho [®]	Black	140163 D	187x137x34	600	1x520
7	151375	Small Portion Tray, ecoecho [®]	Black	140163	187x137x40	700	1x480
8	159111	PP Lid for 151304/151375	Transparent	-	190x138x14	-	1x480
9	115491	Small Portion Tray	White	140164*	188x119x54	760	1x480
10	138005	Small Portion Tray	White	152401	100x100x50	300	1x1320

*No. 8 DF10/20 cassette, 140169 (2 cav.), also available



NEWDUNIFORM®
PEARL

SERVED TO RAISE A SMILE

The best ideas are usually simple. Inspired by Asian bowls, the idea behind new Duniform® Pearl containers is just that: unlike 'regular' trays, they come in an eye-catching deep plate shape. This ensures they stand out on the shelf and provide a winning dining experience.

As a result, they are ideal for encouraging impulse purchases and impressing customers. Available in a choice of formats that match natural eating behaviour, they come with transparent lids and also fit Duniform® machines, if you want a sealed solution.



PP/MINERAL DUNIFORM® PEARL

- Fits Duniform® machines DF15/25, DF32F to DF44*
- Choice of lids or sealing films
- Personalisable sealing films
- Precise cut around edge when sealed

Material: PP/MIN -20°C to +120°C
Temp (Time): +120°C (1h), +70°C (4h), +40°C (10 days), -20°C (unlimited)



No.	Article	Description	Comp	Colour	Cassette DF15/25	Size ØxH (mm)	Vol (ml)	Qty/Cart.
1	176398	DF Pearl M1	1	Black	182654 (1 cav.)	Ø220x42	990	320
2	176397	DF Pearl M2	2	Black	182654 (1 cav.)**	Ø220x42	525/350	300
3	176396	DF Pearl L1	1	Black	182653 (1 cav.)	Ø250x42	1390	350
4	176395	DF Pearl L2	2	Black	182653 (1 cav.)**	Ø250x42	750/490	300
5	176394	DF Pearl L3	3	Black	182653 (1 cav.)**	Ø250x42	590/370/238	300
6	176399	Lid for 176398/176397	-	Transparent	-	Ø257	-	220
7	176400	Lid for 176396/176395/ 176394	-	Transparent	-	Ø289	-	240

*With figure cutting.

**Only outer rim will be sealed.



PP/MINERAL TAKE-AWAY TRAYS

Material: PP -20°C to +120°C

PP/MIN: -20°C to +120°C

Temp (Time): +120°C (1h), +70°C (4h), +40°C (10days), -20°C (unlimited)



No.	Article	Description	Comp	Colour	Cassette DF10/20*	Material	Size LxWxH (mm)	Vol (ml)	Qty/Cart.
1	161149	Take-Away Tray	1	Black	150020	PP/MIN	250x159x43	1100	1x246
2	155054	Take-Away Tray	1	White	150020	PP	250x159x43	1100	1x246
3	154063	Take-Away Tray	1	Black	150020	PP	250x159x55	1400	1x228
4	154486	Take-Away Tray	1	White	150020	PP	250x159x55	1400	1x228
5	154064	Take-Away Tray	1	Black	150020	PP	250x159x70	1750	1x220
6	154487	Take-Away Tray	1	White	150020	PP	250x159x70	1750	1x220
7	161150	Take-Away Tray	2	Black	150021	PP/MIN	250x159x45	700/400	1x246
8	155055	Take-Away Tray	2	White	150021	PP	250x159x45	700/400	1x246
9	161151	Take-Away Tray	3	Black	150022	PP/MIN	250x159x48	550/350/200	1x246
10	155056	Take-Away Tray	3	White	150022	PP	250x159x48	550/350/200	1x246
11	154755	Take-Away Tray	5	Black	155621	PP	250x159x46	85/115/180/270/290	1x240
12	161164	Small Take-Away Tray	1	Black	161171	PP/MIN	215x148x41	900	1x336
13	161165	Small Take-Away Tray	2	Black	161172	PP/MIN	215x148x47	500/400	1x332

*No. 1-6 DF15/DF25 cassette, 165911 (2 cav.) also available.
 No. 7-8 DF15/DF25 cassette, 182975 (2 cav.) also available.
 No. 9-10 DF15/DF25 cassette, 173050 (2 cav.) also available.
 No. 12 DF15/DF25 cassette, 165913 (2 cav.) also available.
 No. 13 DF15/25 cassette, 173051 (2 cav.) also available.



APET LID FOR TAKE-AWAY TRAYS

Material: APET -40°C to +70°C

Temp (Time): +70°C (2h), +40°C (10days), -40°C (unlimited)

No	Article	Description	Colour	Size LxWxH (mm)	Qty/Cart.
1	155620	Lid for Take-Away Trays	Transparent	256x163x12	1x246





PP HMR TRAYS

Material: PP -20°C to +120°C
Temp (Time): +120°C (1h), +100°C (2h), +70°C (2h), +40°C (10days), -20°C (unlimited)



No.	Article	Description	Comp	Colour	Cassette DF10/20*	Size (mm) LxWxH	Vol (ml)	Qty/ Cart.
1	171000	HMR Tray	1	Black	140156	215x148x40	840	1x328
2	171001	HMR Tray	1	White	140156	215x148x40	840	1x328
3	171002	HMR Tray	1	Black	140156	215x148x50	1035	1x312
4	171003	HMR Tray	1	White	140156	215x148x50	1035	1x312
5	171004	HMR Tray	1	Black	140156	215x148x70	1395	1x232
6	171005	HMR Tray	2	Black	140155	215x148x50	540/400	1x312
7	171006	HMR Tray	2	White	140155	215x148x50	540/400	1x312

* No. 1-5 DF15/DF25 cassette, 152415 (2 cav.), also available.
No. 6-7 DF15/25 cassette, 172698 (2 cav.), also available.



1



2



3



4



5



6



7

APET LID FOR HMR TRAYS

Material: APET -40°C to +70°C
Temp (Time): +70°C (2h), +40°C (10days), -40°C (unlimited)



No.	Article	Description	Colour	Size LxWxH (mm)	Qty/Cart.
1	175050	Lid for HMR Trays	Transparent	221x154x14	1x312



1



PP CATER LINE TRAYS

Material: PP -20°C to +120°C
Temp (Time): +120°C (1h), +100°C (2h), +70°C (4h),
+40°C (10days), -20°C (unlimited)



No.	Article	Description	Comp	Colour	Cassette DF10/20*	Size (mm) LxWxH	Vol (ml)	Qty/ Cart.
1	162146	Cater Line Tray	1	Black	140162	227x178x32	920	1x216
2	159179	Cater Line Tray	1	White	140162	227x178x32	920	1x216
3	162150	Cater Line Tray	1	Black	140162	227x178x40	1115	1x216
4	162153	Cater Line Tray	1	White	140162	227x178x40	1115	1x216
5	160063	Cater Line Tray	1	Black	140162	227x178x50	1345	1x216
6	162343	Cater Line Tray	1	White	140162	227x178x50	1345	1x216
7	162147	Cater Line Tray	2	Black	159176	227x178x32	440/370	1x216
8	159180	Cater Line Tray	2	White	159176	227x178x32	440/370	1x216
9	162151	Cater Line Tray	2	Black	159176	227x178x40	550/480	1x216
10	162154	Cater Line Tray	2	White	159176	227x178x40	550/480	1x216
11	160064	Cater Line Tray	2	Black	159176	227x178x50	645/540	1x216
12	162344	Cater Line Tray	2	White	159176	227x178x50	645/540	1x216
13	162303	Cater Line Tray	3	Black	159177	227x178x32	350/225/170	1x216
14	159178	Cater Line Tray	3	White	159177	227x178x32	350/225/170	1x216
15	162152	Cater Line Tray	3	Black	159177	227x178x40	445/280/205	1x216
16	162155	Cater Line Tray	3	White	159177	227x178x40	445/280/205	1x216
17	160065	Cater Line Tray	3	Black	159177	227x178x50	530/325/235	1x216
18	162345	Cater Line Tray	3	White	159177	227x178x50	530/325/235	1x216

*No. 1-6 DF15/DF25 cassette, 153432 (2 cav.), also available
No. 7-12 DF15/DF25 cassette, 163449 (2 cav.), also available
No. 13-18 DF15/DF25 cassette, 163450 (2 cav.), also available



APET LID FOR CATER LINE TRAYS

Material: APET -40°C to +70°C
Temp (Time): +70°C (2h), +40°C (10days), -40°C (unlimited)



No.	Article	Description	Colour	Size (mm) LxWxH	Qty/ Cart.
1	171200	Lid for Cater Line Trays	Transparent	232x183x16	1x372





PP 1/4 GN MENU TRAYS

Material: PP -20°C to +120°C.

Temp (Time): +120°C <60min, +100°C <30min, +70°C <240min, +40°C <10days



No.	Article	Description	Comp	Colour	Cassette DF10/20*	Size LxWxH (mm)	Vol (ml)	Qty/Cart.
1	181900	1/4 GN Menu Tray	1	Black	140149	263x161x40	1165	1x225
2	181901	1/4 GN Menu Tray	1	White	140149	263x161x40	1165	1x225
3	181902	1/4 GN Menu Tray	2	Black	140150	263x161x43	630/490	1x225
4	181903	1/4 GN Menu Tray	2	White	140150	263x161x43	630/490	1x225
5	181904	1/4 GN Menu Tray	3	Black	140151	263x161x45	5490/370/200	1x225
6	181905	1/4 GN Menu Tray	3	White	140151	263x161x45	490/370/200	1x225
5	181906	Lid for 1/4 GN Menu Trays -		Transparent	-	272x173	-	1x225

*DF15/25 cassette, 152407 (2 cav.), also available.





PP/MINERAL BOWLS

- Handles to prevent burned hands

Material: PP/MIN -20°C to +120°C

PP: -20°C to +120°C

Temp (Time): +120°C (1h), +70°C (4h), +40°C (10days), -20°C (unlimited)



No.	Article	Description	Colour	Material	Cassette DF10/20*	Size(mm) LxWxH	Vol (ml)	Qty/ Cart.
1	177907	Bowl	Black	PP/MIN	148354 D	153x153x45	350	1x480
2	177908	Bowl	Black	PP/MIN	148354 D	153x153x60	500	1x480
3	177909	Bowl	Black	PP/MIN	148354	153x153x70	650	1x480
4	177910	Lid for bowls	Transparent	PP	-	159x159x22	-	1x480

* DF15/DF25 cassette, 168939 (2 cav.), also available



1



2



3



4

APET BAGUETTE TRAY

Material: APET -40°C to +70°C

Temp (Time): +70°C (2h), +40°C (10days), -40°C (unlimited)



1

No.	Article	Description	Comp	Colour	Cassette DF10/20*	Size (mm) LxWxH	Vol (ml)	Qty/ Cart.
1	112060	Baguette Tray	1	Transparent	140157	260x110x68	1150	5x70

*DF15/DF25 cassette, 152414 (3 cav.), also available

PP SIDE DISH TRAYS

Material: PP -20°C to +120°C
Temp (Time): +120°C (1h), +70°C (4h), +40°C (10days), -20°C (unlimited)



No.	Article	Description	Comp	Colour	Cassette DF10/20	Size LxWxH (mm)	Vol (ml)	Qty/Cart.
1	758512	Side Dish Tray	1	Black	140152 (2 cav.)*	138x114x35	350	1x300
2	758510	Side Dish Tray	1	White	140152 (2 cav.)*	138x114x35	350	1x300
3	758516	Side Dish Tray	1	Transparent	140152 (2 cav.)*	138x114x35	350	1x300
4	758002	Side Dish Tray	1	Black	140152 (2 cav.)*	138x114x53	470	1x300
5	758000	Side Dish Tray	1	White	140152 (2 cav.)*	138x114x53	470	1x300
6	758006	Side Dish Tray	1	Transparent	140152 (2 cav.)*	138x114x53	470	1x300
7	758602	Side Dish Tray	1	Black	140152 (2 cav.)*	138x114x70	630	1x276
8	758601	Side Dish Tray	1	White	140152 (2 cav.)*	138x114x70	630	1x276
9	758606	Side Dish Tray	1	Transparent	140152 (2 cav.)*	138x114x70	630	1x276
10	757502	Side Dish Tray	2	Black	140153 (2 cav.)	138x114x53	220/140	1x480
11	757501	Side Dish Tray	2	White	140153 (2 cav.)	138x114x53	220/140	1x480
12	757506	Side Dish Tray	2	Transparent	140153 (2 cav.)	138x114x53	220/140	1x480
13	182375	Lid for side dish tray		Transparent	-	140x122	-	1x900

* No. 1-9 DF15/DF25 cassette, 152411 (4 cav.), also available.





PP 1/6 & 1/4 GN TRAYS

Material: PP -20°C to +120°C
 Temp (Time): +120°C (1h), +100°C (2h), +70°C (2h),
 +40°C (10days), -20°C (unlimited)



No.	Article	Description	Colour	Cassette DF15/25*	Size LxWxH (mm)	Vol (ml)	Qty/Cart.
1	171807	1/6 GN Tray	Black	171941 (2 cav.)	176x162x60	1000	1x318
2	171808	1/6 GN Tray	Black	171941 (2 cav.)	176x162x100	1600	1x300
3	152345	1/4 GN Tray	Black	DF15 168940 / DF25 147611 (2 cav.)	265x161x60	1650	1x200
4	152344	1/4 GN Tray	White	DF15 168940 / DF25 147611 (2 cav.)	265x161x60	1650	1x200
5	170870	1/4 GN Tray	Transparent	DF15 168940 / DF25 147611 (2 cav.)	265x161x60	1650	1x200
6	115580	1/4 GN Tray	Black	DF15 168940 / DF25 147611 (2 cav.)	265x161x80	2000	1x200
7	115680	1/4 GN Tray	White	DF15 168940 / DF25 147611 (2 cav.)	265x161x80	2000	1x200
8	170869	1/4 GN Tray	Transparent	DF15 168940 / DF25 147611 (2 cav.)	265x161x80	2000	1x200
9	117100	1/4 GN Tray	Black	DF15 168940 / DF25 147611 (2 cav.)	265x161x100	2600	1x192
10	118100	1/4 GN Tray	White	DF15 168940 / DF25 147611 (2 cav.)	265x161x100	2600	1x192
11	740102	1/4 GN Tray	Black	152407 (2 cav.)	265x162x50	1500	1x200
12	740100	1/4 GN Tray	White	152407 (2 cav.)	265x162x50	1500	1x200
13	740202	1/4 GN Tray	Black	152407 (2 cav.)	265x162x70	2000	1x150
14	740200	1/4 GN Tray	White	152407 (2 cav.)	265x162x70	2000	1x150
15	150260	1/4 GN Tray	Transparent	152407 (2 cav.)	265x162x70	2000	1x150

* No. 1 DF10/20 cassette, 171940, also available
 No. 2 DF10 cassette, 171940, also available
 No. 3-5 DF10/20 cassette, 147609, also available
 No. 6-10 DF10 cassette, 147609, also available
 No. 11-15 DF10/20 cassette, 140149, also available



PP 1/1, 1/2 & 1/3 GN TRAYS

Material: PP -20°C to +120°C

PP/MIN -20°C to +120°C

Temp (Time): +120°C (1h), +70°C (2h), +40°C (10days), -20°C (unlimited)



No.	Article	Description	Comp	Colour	Cassette DF15/25	Material	Size LxWxH (mm)	Vol (ml)	Qty/Cart.
1	166879	1/3 GN Tray	1	Black	150023	PP	325x176x65	2500	1x144
2	142529	1/3 GN Tray	1	White	150023	PP	325x176x65	2500	1x144
3	133726	1/2 GN Tray	1	Black	141550	PP	325x265x40	2700	1x100
4	114040	1/2 GN Tray	1	White	141550	PP	325x265x40	2700	1x100
5	168629	1/2 GN Tray	1	Black	141550	PP	325x265x50	3400	1x100
6	114050	1/2 GN Tray	1	White	141550	PP	325x265x50	3400	1x100
7	161152	1/2 GN Tray	1	Black	141550	PP/MIN	325x265x60	4000	1x100
8	114060	1/2 GN Tray	1	White	141550	PP	325x265x60	4000	1x100
9	115543	1/2 GN Tray	1	Black	141550	PP	325x265x80	5000	1x96
10	114080	1/2 GN Tray	1	White	141550	PP	325x265x80	5000	1x96
11	143309	1/2 GN Tray	1	Blue	141550	PP	325x265x80	5000	1x96
12	115544	1/2 GN Tray	1	Black	141550	PP	325x265x100	6300	1x92
13	114100	1/2 GN Tray	1	White	141550	PP	325x265x100	6300	1x92
14	171654	1/2 GN Tray	2	Black	141550	PP	325x265x50	2x1600	1x100
15	166027	1/1 GN Tray	1	Black	Not sealable	PP	530x325x60	8175	1x48





1



2



1

APET LIDS FOR 1/1 & 1/2 GN TRAYS

Material: APET -40°C to +70°C
Temp (Time): +70°C (2h), +40°C (10days), -40°C (unlimited)

No.	Article	Description	Colour	Size (mm) LxWxH	Qty/ Cart.
1	160801	Lid for 1/2 GN Trays	Transparent	325x266	1x60
2	166026	Lid for 1/1 GN Tray	Transparent	530x325	1x32

DUNIFORM® INSIDER

- Developed for sealing gratinated food
- Holds shape when heated or carried
- Fits Duniform® PP trays 115543 and 114080 perfectly
- Elegant look

Material: CRD/PET -40°C to +220°C
Time: +220°C (1h), +70°C (2h), -40°C (unlimited)



No	Article	Description	Comp.	Colour	Suitable for	Material	Size LxWxH (mm)	Vol (l)	Qty/ Cart.
1	172380	Duniform Insider	1	White	1/2 GN Trays with 80mm height	CRD/PET	290x245x73	2,5-3 l	1x100
2	177559	Duniform Insider	1	White	1/2 GN Trays with 60mm height	CRD/PET	285x240x58	2,0-2,5 l	1x100



CPET 1/3 & 1/2 GN TRAYS

Material: CPET -40°C to +220°C
Temp (Time): +220°C (2h), +70°C (2h), +40°C (10days), -40°C (unlimited)



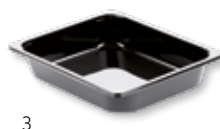
No.	Article	Description	Colour	Cassette DF15/25	Size LxWxH (mm)	Vol (ml)	Qty/Cart.
1	171806	1/3 GN Tray	Black	150023	325x176x60	2400	1x174
2	176605	1/3 GN Tray	White	150023	325x176x60	2400	1x174
3	115511	1/2 GN Tray	Black	141550	325x265x50	3350	1x90
4	159586	1/2 GN Tray	White	141550	325x265x50	3350	1x120
5	176602	1/2 GN Tray	White	141550	325x265x60	3900	1x128
6	131280	1/2 GN Tray	Black	141550	325x265x79	5100	1x80
7	103726	1/2 GN Tray	White	141550	325x265x79	5100	1x80



1



2



3



4



5



6



7

FILMS THAT PROMOTE YOUR BUSINESS

If you want to make your food look delicious, encourage impulse purchases and ensure a leak-free, secure fit, Duniform® films tick the boxes. You can choose between PP, PET and Universal films. These are crystal-clear and can be specified to prevent fogging. Even better, we can personalise them for your business – making your packaging a powerful promotional tool.



"In today's globalised world, there is a growing demand for individualisation. Customising films offers a simple, cost-effective way to meet this need – and build your brand. Our customisation team can organise this for you."

SEALING FILM FOR PP TRAYS



No.	Article	Cooking temp. max °C	Sealing temp.	DF 10	DF 20	DF 15/25	DF 22	DF 32	DF 36	DF 44	DF 46	Thickness µm	Size mm x m	Roll Ø mm	Qty/ Cart.
1	147974	100 (30min)	150 - 180°C	•	•	•	•	-	-	-	-	50	154x250	174	1
2	147975	100 (30min)	150 - 180°C	•	•	•	•	-	-	-	-	50	172x250	174	1
3	147910	100 (30min)	150 - 180°C	•	•	•	•	-	-	-	-	50	185x250	174	1
4	108078	100 (30min)	150 - 180°C	-	-	•*	•	•	-	-	-	50	230x500	227	1
5	107074	100 (30min)	150 - 180°C	-	-	•*	-	•	-	-	-	50	272x500	227	1
6	106576	100 (30min)	150 - 180°C	-	-	-	-	•	•	•	•	50	315x500	227	1
7	107075	100 (30min)	150 - 180°C	-	-	-	-	•	•	•	•	50	340x500	227	1
8	107073	100 (30min)	150 - 180°C	-	-	-	-	•	•	•	•	50	380x500	227	1
9	191010	100 (30min)	150 - 180°C	-	-	-	-	•	•	•	•	50	390x500	227	1
10	151548	100 (30min)	150 - 180°C	-	-	-	-	-	-	•	•	50	415x500	227	1
11	182539	100 (30min)	150 - 180°C	-	-	-	-	-	-	•	•	50	430x250	174	1

* Only with spike roll

SEALING FILM FOR PET TRAYS



No.	Article	Cooking temp. max °C	Sealing temp.	DF 10	DF 20	DF 15/25	DF 22	DF 32	DF 36	DF 44	DF 46	Thickness µm	Size mm x m	Roll Ø mm	Qty/ Cart.
1	162792	210 (30min)	160 - 250°C	-	-	-	•	-	-	-	-	40	115x400	175	1
2	162793	210 (30min)	160 - 250°C	-	-	-	•	-	-	-	-	40	154x400	175	1
3	162800	210 (30min)	160 - 250°C	-	-	-	•	-	-	-	-	40	185x400	175	1
4	162801	210 (30min)	160 - 250°C	-	-	-	•	•	-	-	-	40	240x400	175	1
5	162802	210 (30min)	160 - 250°C	-	-	-	-	•	-	-	-	40	272x400	175	1
6	162804	210 (30min)	160 - 250°C	-	-	-	-	•	•	•	•	40	340x400	175	1
7	162805	210 (30min)	160 - 250°C	-	-	-	-	•	•	•	•	40	380x400	175	1
8	162806	210 (30min)	160 - 250°C	-	-	-	-	•	•	•	•	40	390x400	175	1
9	162807	210 (30min)	160 - 250°C	-	-	-	-	-	-	•	•	40	410x400	175	1
10	162808	210 (30min)	160 - 250°C	-	-	-	-	-	-	•	•	40	446x400	175	1

UNIVERSAL SEALING FILM FOR PP/PET TRAYS



No.	Article	Cooking temp. max °C	Sealing temp.	DF 10	DF 20	DF 15/25	DF 22	DF 32	DF 36	DF 44	DF 46	Thickness µm	Size mm x m	Roll Ø mm	Qty/ Cart.
1	159847	180 (30min)	140 - 210°C	•	•	-	-	-	-	-	-	42	154x400	177	1
2	174553	180 (30min)	140 - 210°C	•	•	•	-	-	-	-	-	42	172x400	177	1
3	159848	180 (30min)	140 - 210°C	•	•	•	-	-	-	-	-	42	185x400	177	1
4	159849	180 (30min)	140 - 210°C	-	-	•	-	-	-	-	-	42	230x400	177	1
5	159850	180 (30min)	140 - 210°C	-	-	•	-	-	-	-	-	42	272x400	177	1
6	159851	180 (30min)	140 - 210°C	-	-	-	-	-	-	•	•	42	340x400	177	1
7	159843	180 (30min)	140 - 210°C	-	-	-	-	-	-	•	•	42	380x400	177	1
8	159844	180 (30min)	140 - 210°C	-	-	-	-	-	-	•	•	42	390x400	177	1
9	159845	180 (30min)	140 - 210°C	-	-	-	-	-	-	•	•	42	415x400	177	1
10	159846	180 (30min)	140 - 210°C	-	-	-	-	-	-	•	•	42	445x400	177	1

DF22/DF22F



DF25



DF20



DF15



DF10



MANUAL MACHINES

A MACHINE FOR EVERY NEED

Our in-house team can help you choose the optimal Duniform® machine for your company. While each machine suits different businesses – from small delis to industrial-scale HMR firms – they all are designed with simplicity in mind. Whatever model you choose, the cassettes can be changed in moments.

DF32/DF32F



DF36



DF44



DF46



GREATER DEMANDS

**MANUAL**

Simply lift and close the lid to seal your filled tray.

**SEMI-AUTOMATIC**

Place the filled tray in the cassette and the machine does the rest.

**FULLY-AUTOMATIC**

The machine fills and seals the trays, and is capable of large volumes.

MACHINES

Duni offers a variety of machines in its Duniform® Sealing Concept. Whatever your requirements or budget, we are certain you will find the right sealing solution for your operation.

General Information	DF10	DF15	DF20	DF25	DF22
Article number	700080	163140	700095	700090	163141
Machine weight	13 kg	25 kg	20 kg	43 kg	30 kg
Cassette weight	0,5 kg	2,5 kg	0,5 kg	2,5 kg	1,0 kg
Electrical data	230 V~, AC 50 Hz 10 A	230 V~, AC 50 Hz 10 A	230 V~, AC 50 Hz 10 A	230 V~, AC 50 Hz 10 A	230 V~, AC 50 Hz 10 A
Maximum power consumption	0,7 kW	1,0 kW	0,75 kW	1 kW	0,8 kW
Lengths of cable/ connection plug	2,5 m / 1-phase grounded	2,5 m / 1-phase grounded	2,5 m / 1-phase grounded	2 - 3 m / 1-phase grounded	2,0 m / 1-phase grounded
Pressing force	930 N	930 N	1003 N	1003 N	1400 N
Capacity	8 cycles/min	8 cycles/min	10 cycles/min	10 cycles/min	2 - 4 cycles/min
Start-up heating time	15 min	20 min	15 min	20 min	10 min
Dimensions	DF10	DF15	DF20	DF25	DF22
Length	640 mm (with handle) 540 mm (base)	830 mm (with handle) 740 mm (base)	615 mm	760 mm	550 mm
Width	240 mm	560 mm	220 mm	355 mm	325 mm
Height	260 mm (closed) 500 mm (open)	270 mm (closed) 660 mm (open)	220 mm (closed) 520 mm (open)	350 mm (closed) 650 mm (open)	450 mm
Trays/Film/Sealing	DF10	DF15	DF20	DF25	DF22
Maximum sealable tray dimension (length x width x depth)	265x175x100 mm (>¼ GN)	325x265x100 mm (½ GN)	265x175x70 mm (>¼ GN)	325x265x100 mm (½ GN)	230x280x100 mm (>¼ GN)
Maximum film width	185 mm	272 mm	185 mm	272 mm	240 mm
Sealing temperature	max 210°C	max 210°C	max 190°C	max 180°C	max 210°C
Sealing technique	Manual	Manual	Semi-automatic	Semi-automatic	Semi-automatic
MAP - Modified Atmosphere Packaging	-	-	-	-	-
Vacuum chambers	-	-	-	-	-
Figure cutting	-	-	-	-	-



DF10



DF15



DF20



DF25



DF22/DF22F

General Information	DF22F	DF32	DF32F	DF36	DF44	DF46
Article number	164795	160900	159788	191000	160901	163142
Machine weight	30 kg	approx. 40 kg	approx. 40 kg	approx. 100 kg	approx. 190 kg	approx. 550 kg
Cassette weight	1,0 kg	approx. 1,5 - 2,5 kg	approx. 3 - 4 kg	approx. 3 - 4 kg	approx. 4 - 6 kg	approx. 3 - 5 kg
Electrical data	230 V~, AC 50 Hz 10 A	230 V~, AC 50/60 Hz	230 V~, AC 50/60 Hz	230 V~, AC 50/60 Hz	400 V~, AC 50/60 Hz	400 V~, AC 50/60 Hz
Maximum power consumption	1,0 kW	1,8 kW	1,8 kW	2,5 kW	4,3 kW	6,3 kW
Lengths of cable/ connection plug	2,0 m / 1-phase grounded	2 m / 1-phase grounded	2 m / 1-phase grounded	1,5 m / 1-phase grounded	- / 3-phase grounded	- / 3-phase grounded
Pressing force	1400 N	2000 N	2000 N	2000 N	7000 N	-
Capacity	2 - 4 cycles/min	2 - 4 cycles/min	2 - 4 cycles/min	2 with MAP, 2 - 6 without MAP	3 with MAP, 2 - 6 without MAP	2-4 with MAP, 5-8 without MAP
Start-up heating time	10 min	10 min	10 min	10 min	20 min	10 min
Dimensions	DF22F	DF32	DF32F	DF36	DF44	DF46
Length	550 mm	550 mm	550 mm	650 mm	970 mm	2580 mm
Width	325 mm	475 mm	475 mm	530 mm	675 mm	905 mm
Height	450 mm	450 mm	450 mm	625 mm	1570 mm	1640 mm
Trays/Film/Sealing	DF22F	DF32	DF32F	DF36	DF44	DF46
Maximum sealable tray dimension (length x width x depth)	230x280x100 mm (>¼ GN)	380x280x100 mm (>½ GN)	370x275x100 mm (>½ GN)	360x270x100 mm (>½ GN)	430x315x95 mm (>½ GN)	360x270x100 mm (>½ GN)
Maximum film width	240 mm	390 mm	390 mm	390 mm	470 mm	446 mm
Sealing temperature	max 210°C	max 200°C	max 200°C	max 200°C	max 200°C	max 200°C
Sealing technique	Semi-automatic	Semi-automatic	Semi-automatic	Semi-automatic	Semi-automatic	Automatic
MAP - Modified Atmosphere Packaging	-	-	-	Yes	Yes	Yes
Vacuum chambers	-	-	-	1	1	1
Figure cutting	Yes	-	Yes	Yes	Yes	Yes



DF32/DF32F



DF36



DF44



DF46

STANDARD SIZES, STANDOUT STYLE

Duniform® trays come in elegant 'straight to the table' formats to suit all types of frozen, chilled and warm food. They also offer a wide variety of GN compartment sizes, giving you full control over volumes, costs and end-user experience. The icing on the cake? They are designed for convenient stackability and transport too.



OPTIMISE
CONVENIENCE AND
COST-MANAGEMENT



1. Put the filled tray in the cassettes / machine.

2. Pull the film with two hands over the tray.

3. Push the lid of the machine down until it starts to seal.

4. The machine opens automatically once the tray is sealed (except manual machines DF10/15).



DF10

- Small & compact
- Easy and fast

General Information

Article number	700080
Machine weight	13 kg
Cassette weight	0,5 kg
Electrical data	230 V~, AC 50 Hz 10 A
Maximum power consumption	0,7 kW
Lengths of cable / connection plug	2,5 m / 1-phase grounded
Pressing force	930 N
Capacity	8 cycles/min
Start-up heating time	15 min

Trays/Film/Sealing

Maximum sealable tray dimension	265 x 175 x 100 mm (>¼ GN)
Maximum film width	185 mm
Sealing temperature	max 210°C
Sealing technique	Manual

Accessories

Spike Roll DF10	155198
Trolley	887120

DF15

- Seals sizes up to 1/2 GN
- Easy & fast

General Information

Article number	163140
Machine weight	25 kg
Cassette weight	2,5 kg
Electrical data	230 V~, AC 50 Hz 10 A
Maximum power consumption	1,0 kW
Lengths of cable / connection plug	2,5 m / 1-phase grounded
Pressing force	930 N
Capacity	8 cycles/min
Start-up heating time	20 min

Trays/Film/Sealing

Maximum sealable tray dimension	325 x 265 x 100 mm (½ GN)
Maximum film width	272 mm
Sealing temperature	max 210°C
Sealing technique	Manual

Accessories

Adapter for DF20/10 Cassettes	141549
Spike Roll DF10	155198
Trolley	887120





DF20

- Semi-automatic
- Light and robust
- Digital display

General Information

Article number	700095
Machine weight	20 kg
Cassette weight	0,5 kg
Electrical data	230 V~, AC 50 Hz 10 A
Maximum power consumption	0,75 kW
Lengths of cable / connection plug	2,5 m / 1-phase grounded
Pressing force	1003 N
Capacity	10 cycles/min
Start-up heating time	15 min

Trays/Film/Sealing

Maximum sealable tray dimension	265 x 175 x 70 mm (>¼ GN)
Maximum film width	185 mm
Sealing temperature	max 190°C
Sealing technique	Semi-automatic

Accessories

Cassette Rack DF20	102014
Spike Roll DF10	102903
Trolley	887120

DF25

- Seals sizes up to 1/2 GN
- Robust
- Semi-automatic

General Information

Article number	700090
Machine weight	43 kg
Cassette weight	2,5 kg
Electrical data	230 V~, AC 50 Hz 10 A
Maximum power consumption	1,0 kW
Lengths of cable / connection plug	2-3 m / 1-phase grounded
Pressing force	1003 N
Capacity	10 cycles/min
Start-up heating time	20 min

Trays/Film/Sealing

Maximum sealable tray dimension	325 x 265 x 100 mm (½ GN)
Maximum film width	272 mm
Sealing temperature	max 190°C
Sealing technique	Semi-automatic

Accessories

Adapter for DF20/10 Cassettes	141549
Spike Roll DF10	108824
Trolley	887100





DF22/22F

- Small & compact
- Semi-automatic
- Figure cutting available

General Information

Article number	163141/164795
Machine weight	30 kg
Cassette weight	1,0 kg
Electrical data	230 V~, AC 50 Hz 10 A
Maximum power consumption	0,8 kW
Lengths of cable / connection plug	2,0 m / 1-phase grounded
Pressing force	1400 N
Capacity	2-4 cycles/min
Start-up heating time	10 min

Trays/Film/Sealing

Maximum sealable tray dimension	230 x 280 x 100 mm (>¼ GN)
Maximum film width	240 mm
Sealing temperature	max 210°C
Sealing technique	Semi-automatic
Figure cutting	Yes (164795)

Accessories

Spike Roll DF22/22F	168744
Trolley	887100
Trolley	161965

DF32/32F

- Seals sizes larger than 1/2 GN
- Small & compact
- Figure cutting available

General Information

Article number	160900/159788
Machine weight	approx. 40 kg
Cassette weight	2-3 kg
Electrical data	1/N/PE 230 V~, AC 50/60 Hz
Maximum power consumption	1,8 kW
Lengths of cable / connection plug	2 m / 1-phase grounded
Pressing force	2000 N
Capacity	2-3 cycles/min
Start-up heating time	10 min

Trays/Film/Sealing

Maximum sealable tray dimension	380 x 280 x 100 mm (>½ GN)
Maximum film width	390 mm
Sealing temperature	max 200°C
Sealing technique	Semi-automatic
Figure cutting	Yes (159788)

Accessories

Spike Roll DF32/32F	164020
Trolley	887120
Trolley	161965





DF36

- Compact & robust
- Figure cutting
- Programmable cycles
- MAP

General Information	
Article number	191000
Machine weight	approx. 100 kg
Cassette weight	3- 4 kg
Electrical data	1/N/PE 230 V~, AC - 50/60 Hz
Maximum power consumption	2,5 kW
Lengths of cable / connection plug	1,5 m / 1-phased grounded
Pressing force	2000 N
Capacity	2 with MAP, 2 - 6 without MAP
Start-up heating time	10 min
Trays/Film/Sealing	
Maximum sealable tray dimension	360 x 270 x 100 mm (>½ GN)
Maximum film width	390 mm
Sealing temperature	max 200°C
Sealing technique	Semi-automatic
Vacuum chambers	1
Figure cutting	Yes
Accessories	
Spike Roll DF36	168744
Vacuum Pump 20m³/h	166472
Trolley	887100
Trolley	161965



DF44

- MAP
- Robust
- Automatic film winding
- Figure cutting

General Information	
Article number	160901
Machine weight	approx. 190 kg
Cassette weight	4-6 kg
Electrical data	3/N/PE 400 V~, AC - 50/60 Hz
Maximum power consumption	4,3 kW
Lengths of cable / connection plug	- / 3-phase
Pressing force	7000 N
Capacity	3 with MAP, 2 - 6 without MAP
Start-up heating time	20 min
Trays/Film/Sealing	
Maximum sealable tray dimension	430 x 315 x 95 mm (>½ GN)
Maximum film width	470 mm
Sealing temperature	max 200°C
Sealing technique	Semi-automatic
MAP - Modified Atmosphere Packaging	Yes
Vacuum chambers	1
Figure cutting	Yes
Accessories	
Spike Roll DF44	164020
Compressor	152556
High Oxygen Vacuum Pump 40 m³/h	166473
High Oxygen Vacuum Pump 60 m³/h	166474
Food Filter DF44	168631



DF46

- Fully automatic
- MAP
- Film winding
- Figure cutting

General Information

Article number	163142
Machine weight	approx. 550 kg
Cassette weight	3 - 5 kg
Electrical data	400 V~, AC- 50/60 Hz
Maximum power consumption	6,3 kW
Lengths of cable / connection plug	- / 3-phase grounded
Pressing force	-
Capacity	2-4 with MAP, 5- 8 without MAP
Start-up heating time	10 min

Trays/Film/Sealing

Maximum sealable tray dimension	360 x 270 x 100 mm (>½ GN)
Maximum film width	446 mm
Sealing temperature	max 200°C
Sealing technique	Automatic
MAP - Modified Atmosphere Packaging	Yes
Vacuum chambers	1
Figure cutting	Yes

Accessories

Spike Roll DF46	167331
High Oxygene Vacuum Pump 40 m³/h	166473
Food Filter DF46	168632
Tray Rails (for two cavities)	164723



THERMO BAGS

- Maintains food temperature
- Can be loaded from the side or from the top
- Can be connected on top of each other with buckles



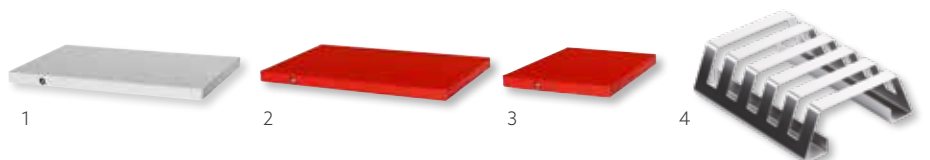
No.	Article	Description	Comp	Benefits	Buckles	Size (mm) LxWxH	Qty/ Cart.
1	163086	Thermo Bag	1	2 ¼ GN Tray	Yes	290x200x100	5x1
2	163085	Thermo Bag	1	Economy 5 ¼ GN Tray	No	275x200x240	5x1
3	163087	Thermo Bag	1	5 ¼ GN Tray	Yes	275x200x240	5x1
4	163088	Thermo Bag	1	Medium	No	310x240x260	5x1
5	163089	Thermo Bag	1	Large	No	420x200x260	5x1



TEMPERATURE CONTROL EQUIPMENT

- For improved temperature control
- Fits into thermo bag lids

No	Article	Decription	Colour	Material	Size LxWxH (mm)	Pack
1	149403	Cooling Plate ¼ GN	White	Aluminium	164x265x15	5x1
2	153490	Heating Plate 1/4 GN	Red	Aluminium	164x265x15	5x1
3	157530	Small Heating Plate	Red	Aluminium	155x155x15	5x1
4	160542	Stand for Heating Plate	-	Aluminium	180x145x52	1x1





THERMO BOXES

- Maintains food temperature
- Washable for easy cleaning



No.	Article	Comp	Description	Material	Benefits	Size (mm) LxWxH	Qty/ Cart.
1	161169	1	Thermo Box	EPP	¼ GN	660x400x300	1x1
2	161170	1	Thermo Box	EPP	½ GN	450x330x300	1x1
3	113500	3	Thermo Box	EPP	Single Portion	400x325x110	6x1
4	751500	3	Thermo Box	EPP	Single Portion	455x320x105	5x1
5	164669	1	Thermo Box	EPP	Single Portion	325x255x327	1x1
6	176752	1	Thermo Box	EPS	¼ GN	720x403x340	1x1
7	176848	2	Thermo Box	EPS	2x163087	507x408x295	1x1



TROLLEYS

No.	Article	Description	Size LxWxH (mm)	Qty/Cart.
1	887100	Trolley Stand	900x650x670	1x1
2	161965	Trolley	600x600x800	1x1
3	887120	Trolley Stand	600x400x800	1x1





MATERIALS GUIDE

Different materials suit different needs. This guide will help you to make the right choice for your business.

SYMBOL	NAME	ECOECHO®	TEMPERATURE*	DESCRIPTION OF MATERIAL	RECYCLING/DISPOSAL
	APET	-	-40°C to +70°C	Virgin plastic, amorphous poly(ethylene terephthalate)	Recycle as Plastics
	CPET	-	-40°C to +220°C	Virgin plastic, crystalline poly(ethylene terephthalate)	Recycle as Plastics
	rPET	ecoecho®	-40°C to +70°C	Up to 80 % recycled PET, min 20 % virgin plastic	Recycle as Plastics
	PLA	ecoecho®	-4°C to +40°C	Bioplastic from plant starch, polylactic acid	Compostable EN13432 or recycle as Plastics
	CPLA	ecoecho®	-4°C to +100°C	Bioplastic from plant starch, crystalline polylactic acid	Compostable EN13432 (cutlery ASTM D6400 and ASTM D6868) or recycle as Plastics
	PBS	-	-4°C to +40°C	Virgin plastic, polybutylene succinate	Compostable EN13432 or recycle as Plastics
	PE	-	-4°C to +100°C	Virgin plastic, polyethene	Recycle as Plastics
	PP	-	-20°C to +120°C	Virgin plastic, polypropene	Recycle as Plastics
	Bioplastic	ecoecho®	-20°C to +120°C	Bioplastic from sugar and natural waxes	Recycle as Plastics
	PS/EPS	-	-4°C to +100°C	Virgin plastic, polystyrene / expanded polystyrene	Recycle as Plastics
	Mineral plastic	ecoecho®	-20°C to +120°C	Virgin plastic, polypropene with chalk or talcum	Recycle as Plastics
	Bagasse	ecoecho®	-4°C to +100°C	Sugar cane fiber by-product	Compostable EN13432 or recycle as Carton/Paper
	ALU	-	-40°C to +250°C	Aluminium	Recycle as Metal
	PAP (Paper)	-	-20°C to +100°C	Paper from forest fiber	Recycle as Paper/Carton
	Cardboard	-	-20°C to +100°C	Cardboard from forest fiber	Recycle as Paper/Carton

*Check specific temperature and time recommendation in catalogue

THE LIFECYCLE OF A DUNI PRODUCT

The life of a Duni product starts with the choice of material. We prefer renewable raw materials from trees and plants, which are responsibly grown and sourced. Leftover materials such as sugarcane fibres or recycled plastics are also a great way to upcycle and save resources.

Conscious convenience is a good reason to choose and use Duni products. We work hard to ensure good working conditions and limited environmental impact at our own, and our suppliers', manufacturing sites.

At the end of their life, Duni products should be recycled, composted or burned to generate energy. Littering is never an alternative and landfill should be avoided. We strive to enable good waste handling alternatives of our products.



To discover more about our Blue Mission, visit our [Corporate Social Responsibility page at Duni.com](#)

SYMBOLS GUIDE



Designed for optimal stackability.



Leak resistant.



Microwave safe.



Lid or sealing film does not mist up.



Hinged lid tears off easily.



Oven safe.



Can be sealed by a Duniform® machine.



Can be customised with a logo, design or message.



Excellent insulation properties.



Made with wood from FSC®-certified forests or post-consumer waste.

The mark of responsible forestry

ecoecho® Innovative and eco-conscious design – for example made from biodegradable or recycled materials.



SUPPLIER OF GOODFOODMOOD™

FOR MORE IDEAS AND
INFORMATION VISIT DUNI.COM

This catalogue is printed
on FSC®-certified paper.

