



**PROFESSIONAL
MEAL SERVICE 2020**



LOVE FOOD?

FOLLOW US ON INSTA & LINKEDIN



ecoecho®

GRAB THE SUSTAINABILITY OPPORTUNITY

The take-away market is booming, as busy consumers increasingly get it to-go. And, with environmental issues dominating the agenda, many are demanding sustainably-designed packaging. Our collection gives you everything you need to meet their needs and limit the impact of your business. Designed to create goodfoodmood, it offers a full choice of convenient, stylish solutions made from top-quality eco-conscious materials.



Interested in an eco solution?

Go green with us and subscribe to our e-newsletter on [Duni.com](https://duni.com).



A DEDICATED, DEPENDABLE PARTNER

Choosing Duni, you get a partner you can depend on. And a market-leading choice of eco-conscious materials to discover – including RPET made from recycled plastic bottles and compostable bagasse. These all reflect over 60 years' expertise in design, and show we live the values behind our Blue Mission*. Also, as we rigorously assess the lifecycle of our products, you can trust them to show you – and your business – in a positive light.



*To discover more about our Blue Mission, visit our Corporate Social Responsibility page at [Duni.com](https://duni.com).



ecoecho®

SUPERIOR SUSTAINABLE MATERIALS

You see it everywhere. People all over the world are talking about the environment and want to live more sustainably. The Duni ecoecho® range helps you to meet their demands. It offers a market-leading selection of some of the best, if not the best, mindful materials available today. These elevate any meal experience and point to a brighter future.



Interested in an eco solution? Go green with us and subscribe to our newsletter on [Duni.com](https://duni.com).



ecoecho®

CLASSIC DESIGN COMPOSTABLE MATERIAL

Created from compostable bagasse, Octabagasse boxes give you the best of all worlds: a sustainable profile, classic design, best-in-class display performance and exceptional convenience. If you want to work with total efficiency, limit your environmental impact and provide superior meal experiences, they are the standout solution. Just imagine what they could bring to your business.

► **WATCH THE MOVIE** Check out the Octabagasse movie at Duni.com/octabagasse



Subscribe to our e-newsletter on Duni.com.



NEW
BLOOM

ecoecho®

AMAZING WHAT YOU CAN DO WITH GRASS

The grass paper we use for our Bloom concept has an uplifting, sustainable story to tell. Extremely energy-efficient to produce, it only requires two litres of water to produce one ton of pulp. Even better, the grass used is harvested locally from parks and other areas not competing with grass for animal feed.

► **WATCH THE MOVIE** Check out the Bloom movie at Duni.com/bloom





ecoecho®

ECO-CONSCIOUS PACKAGING IN ITS PUREST FORM

The modular Viking range meets the strong market demand for high-quality cardboard boxes with collapsible, flat-packed lids that stay securely shut and don't require folding. Crafted from 100% renewable resources, it offers a wide variety of easy-to-assemble and quick-to-fill options for just about any hot or cold foods. These are suitable for profile printing, which we are happy to organise.



A) Viking boxes are constructed with tapered edges, which makes them – unusually for cardboard boxes – resistant to leaks.

B) Viking ecoecho® boxes are made from FSC®-certified cardboard and plant-based PLA lamination.

C) The lids conveniently flip open with no folding required.

The Viking concept suits different budgets. The boxes and lids are available in basic and ecoecho® versions. See the full concept on pages 33 and 35.



ecoecho®

RECYCLED MATERIAL STUNNING DESIGN

Polardeli boxes bring a fresh perspective to mindful packaging design. Ideal for delis, they protect chilled food while their transparent, recycled PET material makes it look delicious. Even better, they offer top-tier functionality and work with Duniform® sealing machines and lids.

► **WATCH THE MOVIE** Check out the Polardeli movie at Duni.com/Polardeli





DUNIFORM®

PROFESSIONAL IN-HOUSE PACKAGING MADE EASY

For over 40 years, the Duniform® concept has set the standard for simple, smart professional in-house sealable packaging. Over that time, it has helped to drive success for many hotels, restaurants, meal delivery service (MDS) companies, caterers and retailers. The concept has consistently grown in popularity and scale, but the idea it is built on – that good food deserves good packaging – remains the same.



Subscribe to our newsletter to get more information about Duniform®.



LIVE TASTEFUL. NOT WASTEFUL.

Designed to make an impact, the Atlantis concept meets the demands of sustainably-minded customers who want to eat good stuff that comes in mindful packaging - helping to reduce their carbon footprint.

Organic shapes are optimised for a different style of bowl that emphasises a love for planet Earth. All products are designed with the circular economy in mind, and can be composted at home, recycled or reused to eliminate waste.





BIOPAK ATLANTIS BIOBOWL CONCEPT

- Suitable for a wide range of solid, semi-solid and semi-fluid foods
- Made from plants, designed with the circular economy in mind
- Suitable for industrial composting
- Cutlery crafted from FSC®-certified wood



Material: Bagasse max +100°C (microwarmable)
RPET max +70°C / Wood max +70°C
Bamboo max +70°C / Rubber

BioPak
It doesn't cost the earth



No.	Article	Description	Colour	Material	Size LxWxH (mm)	Volume (ml)	Qty/Cart.
1	190033	Atlantis Bowl	White	Bagasse	160x149x45	500	8x50
2	190034	Atlantis Bowl	White	Bagasse	160x149x75	900	8x50
3	190035	Atlantis Lid for 190033/-34	Transparent	RPET	164x150x17	-	4x50
4	190036	Atlantis Lid for 190033/-34	White	Bagasse	166x150x12	-	16x50
5	190037	Rubberband Large	White	Rubber	315x3x1	-	4x100
6	190038	Rubberband Small	White	Rubber	240x3x1	-	4x100
7	190039	Atlantis Spoonstick	Brown	Bamboo	220x24x8	-	10x100
8	190040	Atlantis Stick	Brown	Bamboo	220x8x8	-	10x100
9	190041	Atlantis Scoop	Brown	Wood	64x55x14	-	10x100



1 New



2 New



3 New



4 New



5 New



6 New



7 New



8 New



9 New

OCTABAGASSE CLASSIC SHAPE NEW ECO-CONSCIOUS PROFILE

The mindful materials used to make Octabagasse boxes add an extra dimension to a classic design, which offers best-in-class display and handling performance. If you want to impress your customers and your team, look no further.

▶ WATCH THE MOVIE

Check out the Octabagasse movie at Duni.com/octabagasse



EASY TO CARRY

Combining first-class portability and sustainability, Octabagasse boxes feature easy-to-grip edges. The result? They are easier to work with and dine from.

CRYSTAL CLEAR RPET LIDS

Made from 100% recycled plastic, the transparent RPET lids contrast elegantly with the bagasse and make your food look delicious.

NATURAL-LOOK BAGASSE LIDS

Does an opaque lid suit your concept better? Go for the bagasse lids which seamlessly match the bases and create an elegant eco-look.

SUPER-SECURE CLOSING

Both the RPET and bagasse lids shut securely to protect against spills and waste. The bagasse lids, in particular, incorporate wings and lock shut with a satisfying haptic click - a feature customers and staff are sure to appreciate.





STAND OUT WITH PERSONALISATION

Today's consumers want individual experiences. You can take advantage of our Customisation service to give your customers exactly that - and, in doing so, build your brand.

Our experienced team can help you do this with speed and efficiency. Specifically, they can emboss the 100% RPET lids and provide custom Stickers and Sleeves.

SMART STACK SYSTEM



Material: Bagasse max +100°C (microwarmable)
RPET max +70°C, anti-fog

ecoecho®



No.	Article	Description	OK Compost	Colour	Material	Size LxWxH (mm)	Volume (ml)	Qty/Cart.
1	188140	Octabagasse	*	Brown	Bagasse	152x152x38	400 ml	6x50
1.1	192514	Lid for 188140		Transparent	100% RPET	160x160x39	-	6x50
1.2	188148	Lid for 188140	*	Brown	Bagasse	202x160x37	-	4x80
2	188141	Octabagasse	*	Brown	Bagasse	183x183x42	650 ml	6x50
2.1	192515	Lid for 188141		Transparent	100% RPET	191x191x35	-	6x50
2.2	188149	Lid for 188141	*	Brown	Bagasse	244x192x32	-	6x50
3	188142	Octabagasse	*	Brown	Bagasse	224x224x42	1000 ml	8x50
3.1	192516	Lid for 188142		Transparent	100% RPET	233x233x44	-	4x50
3.2	188150	Lid for 188142	*	Brown	Bagasse	290x233x42	-	4x50

* = OK Compost Industrial





BAGASSE BOWLS

- Designed to limit climate change
- Compostable Bagasse
- 100% recycled PET, anti-fog
- RPET lids can be customised



Material: Bagasse max +100°C (microwarmable)
RPET max +70°C, anti-fog

ecoecho®



No.	Article	Description	Colour	Material	Size LxWxH (mm)	Volume (ml)	Qty/Cart.
1	169211	Bagasse Bowl ecoecho®	Brown	Bagasse	154x154x56	600	12x40
2	188060	RPET Lid for 169211 ecoecho®	Transparent	100% RPET	170x170x35	-	9x40
3	177000	Bagasse Bowl ecoecho®	Brown	Bagasse	194x194x48	800	8x40
4	177001	Bagasse Bowl ecoecho®	White	Bagasse	194x194x48	800	8x40
5	177002	Bagasse Bowl ecoecho®	Brown	Bagasse	194x194x60	1000	8x40
6	177003	Bagasse Bowl ecoecho®	White	Bagasse	194x194x60	1000	8x40
7	169212	Bagasse Bowl ecoecho®	Brown	Bagasse	194x194x53	900	4x40
8	169213	Bagasse Bowl ecoecho®	Brown	Bagasse	194x194x65	1200	4x40
9	177004	Bagasse Lid for 169212 / 169213 / 177000 / 177002 ecoecho®	Brown	Bagasse	194x194x27	-	8x40
10	177005	Bagasse Lid for 177001 / 177003 ecoecho®	White	Bagasse	201x201x27	-	8x40
11	188061	RPET Lid for 169212 / 169213 / 177000 - 177003 ecoecho®	Transparent	100% RPET	201x201x27	-	4x40
12	188265	RPET Lid for 169212 / 169213 / 177000 - 177003 ecoecho®	Transparent	100% RPET	213x213x20	-	4x40





Sustainable ecoecho® napkins are a perfect match to eco-conscious packaging. Discover the full range in our Table Top catalogues.

BAGASSE MEAL BOXES

- Compostable
- Made from renewable by-products
- Hinged lid

Material: Bagasse max +100°C
(microwarmable)

ecoecho®



No.	Article	Description	OK Compost	Comp	Size (mm) LxWxH	Volume (ml)	Qty/ Cart.
1	192071	Bagasse Meal Box ecoecho®	*	1	162x152x80	475	4x50
2	192074	Bagasse Meal Box ecoecho®	*	1	185x143x62	530	6x50
3	192070	Bagasse Meal Box ecoecho®		1	239x156x63	850	2x60
4	182543	Bagasse Meal Box ecoecho®	*	2	241x163x65	470/300	5x50
5	192072	Bagasse Meal Box ecoecho®	*	1	225x201x85	1000	3x50
6	182544	Bagasse Meal Box ecoecho®	*	3	225x201x85	325/70/60	4x50
7	192073	Bagasse Meal Box ecoecho®	*	1	236x231x81	1200	2x50
8	163077	Bagasse Meal Box ecoecho®		3	236x231x81	350/120/120	2x50

* = OK Compost Home





BAGASSE BOXES

- Designed to limit climate change
- Compostable Bagasse
- 100% recycled PET material is anti-fog
- RPET lids can be customized

Material: Bagasse max +100°C (microwarmable)
RPET max +70°C, anti-fog

ecoecho®



No.	Article	Description	Colour	Material	Size LxWxH (mm)	Volume (ml)	Qty/Cart.
1	177006	Bagasse Box ecoecho®	Brown	Bagasse	155x155x53	900	9x40
2	176871	Bagasse Box ecoecho®	White	Bagasse	155x155x53	900	9x40
3	188062	RPET Lid for 177006 / 176871 ecoecho®	Transparent	100% RPET	156x156x44	-	8x40
4	177008	Bagasse Box ecoecho®	Brown	Bagasse	230x155x36	850	12x40
5	177009	Bagasse Box ecoecho®	White	Bagasse	230x155x36	850	12x40
6	177010	Bagasse Box ecoecho®	Brown	Bagasse	230x155x46	1200	12x40
7	177011	Bagasse Box ecoecho®	White	Bagasse	230x155x46	1200	12x40
8	188063	RPET Lid for 177008-177011 ecoecho®	Transparent	100% RPET	239x165x28	-	6x40



1



2



3



4



5



6



7



8



MADE FROM PLANTS

Made from compostable bagasse, a state-of-the-art material that is the future of packaging, the Snack Box enables you to present your entire offering as sustainable. If you are looking for a robust feel-good solution, look no further.



BAGASSE SNACK BOX

- Compostable
- Made out of renewable by-products
- Stackable
- Hinged lid

Material: Bagasse max +100°C
(microwarmable)

ecoecho®



No.	Article	Description	Volume (ml)	Size Ø (mm) LxWxH	Qty/ Cart.
1	178071	Bagasse Snack Box ecoecho®	575	145x145x100	4x50
2	178072	Bagasse Snack Box ecoecho®	750	185x185x70	6x50





BAGASSE PIZZA BOX

- Compostable
- Made out of renewable by-products
- Keeps pizza warmer longer than regular carton

Material: Bagasse max +100°C
(microwarmable)

ecoecho®



No.	Article	Description	Colour	Size (mm) LxWxH	Qty/ Cart.
1	168742	Bagasse Pizza Box Bottom ecoecho®	Brown	356x356x34	3x55
2	168743	Bagasse Pizza Box Lid ecoecho®	Brown	363x363x19	3x55



1

2



NEW



BAGASSE BOWL CONCEPT **VARIETY IS THE SPICE OF LIFE**

The eco-conscious Coppa take-away bowl concept shows you don't have to be brown to be 'green'. Perfect for the pick n' mix trend, it unites coloured FSC®-certified cardboard lids with compostable bagasse bowls. Cleverly, these are sized to meet the growing demand for small portions. We are happy to customise the lids for you too.



BAGASSE BOWL CONCEPT

- Bowls can be composted at home
- Extremely secure lid
- Creative and eco-conscious
- Perfect for the pick n' mix trend
- Customisable for added brand wow-factor
- Ideal for creating tempting displays
- Small portions can help to reduce food waste

Material: BAGASSE: max +100°C (microwarmable)
Cardboard / PE max 100°C (< 15 min), 70°C (< 2h)



No.	Article	Description	Colour	Material	Size LxWxH (mm)	Volume (ml)	Qty/Cart.
1	187045*	Coppa Bowl ecoecho	White	Bagasse	116x116x50	250 ml	10x50
2	187046*	Coppa Bowl ecoecho	White	Bagasse	116x116x66	350 ml	10x50
3	187047*	Coppa Bowl ecoecho	White	Bagasse	140x140x57	500 ml	10x50
4	187049	Coppa Lid for 187045/-46	White	Cardboard/PE	116x116x20	-	10x25
5	187051	Coppa Lid for 187045/-46	Black	Cardboard/PE	116x116x20	-	10x25
6	187054	Coppa Lid for 187045/-46	Plum	Cardboard/PE	116x116x20	-	10x25
7	187055	Coppa Lid for 187047	White	Cardboard/PE	140x140x20	-	12x21
8	187057	Coppa Lid for 187047	Black	Cardboard/PE	140x140x20	-	12x21
9	187060	Coppa Lid for 187047	Plum	Cardboard/PE	140x140x20	-	12x21

*These products are compostable





GRASS PAPER CONCEPT

It's the magic of nature. From grass, to seed, to flour, to delicious, nutritious bread. So what better way to complete the experience of baked goodies than by serving them in eco-conscious packaging that's made from grass paper? With the eco conscious new Bloom concept, you can!

If you want to do well by doing good, check it out.

▶ WATCH THE MOVIE

Check out the Grass Paper Concept Bloom at Duni.com/bloom



BLOOM GRASS PAPER CONCEPT

- Designed in Sweden. Made in Germany.
- Grass paper is very energy-efficient to produce
- Only 2 litres of water needed to produce 1 ton of grass fibre pulp
- Material has unique eco-look and feel
- Sizes for all needs, from baguettes to sandwiches, buns and cookies
- Bloom grass paper products have a low Carbon Footprint.

ecoecho®

Material: Grass paper max +90°C

No.	Article	Description	Colour	Size (mm) LxWxH	Qty/ Cart.
1	190059	Grass Paper Tray, Bloom Small	Natural	150x145x45	500
2	190058	Grass Paper Tray, Bloom Medium	Natural	225x150x55	500
3	190057	Grass Paper Tray, Bloom Large	Natural	285x135x45	500
4	190056	Grass Paper Bag, Bloom Mini	Natural	175x120	500
5	190055	Grass Paper Bag, Bloom Medium	Natural	310x200	500
6	190054	Grass Paper Bag, Bloom Large	Natural	450x300	500
7	190053	Grass Paper Bag, Bloom Long	Natural	500x150	500
8	190052	Grass Paper Wrap, Bloom Mini	Natural	345x290	1000
9	190051	Grass Paper Wrap, Bloom Large	Natural	462x390	1000
10	190050	Grass Paper Wrap, Bloom XL	Natural	695x590	500

1 New



2 New



3 New



4-5 New



6-7 New



8-9-10 New



Add a flexible finishing touch; we offer profile printed stickers and adhesive sleeves that enable you to promote your brand on-the-go





VIKING ECOECHO®

- Made from FSC®-certified cardboard and PLA made from 100% renewable resources
- Modular and stackable
- Tapered edges for strong leak-resistance
- 2-piece design with crystal-clear lid

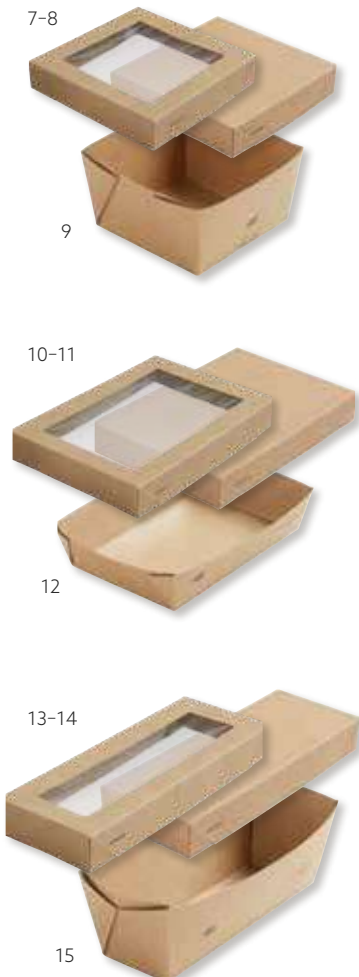
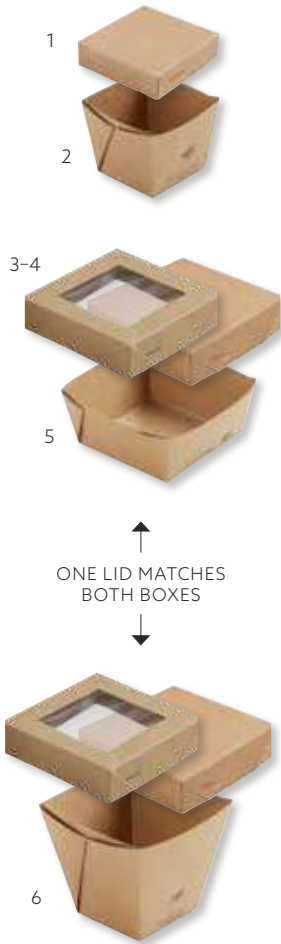
ecoecho®



Material: Cardboard/PLA max +100°C

No.	Article	Description	Colour	Size (mm) LxWxH	Volume (ml)	Qty/ Cart.
1	188114*	Viking ecoecho® Cube Mini Lid	Brown	75x75x20	-	1x300
2	188113*	Viking ecoecho® Cube Mini	Brown	75x75x60	250	1x300
3	188112	Viking ecoecho® Cube Lid with window	Brown	113x113x29	-	1x300
4	188111*	Viking ecoecho® Cube Lid	Brown	113x113x29	-	1x300
5	188110*	Viking ecoecho® Cube Low	Brown	113x113x50	510	1x300
6	188109*	Viking ecoecho® Cube High	Brown	113x113x100	820	1x300
7	188108	Viking ecoecho® Block Lid with window	Brown	140x140x29	-	1x300
8	188107*	Viking ecoecho® Block Lid	Brown	140x140x29	-	1x300
9	188106*	Viking ecoecho® Block Box	Brown	140x140x75	1200	1x300
10	188105	Viking ecoecho® Brick Lid with window	Brown	200x140x30	-	1x300
11	188104*	Viking ecoecho® Brick Lid	Brown	200x140x30	-	1x300
12	188103*	Viking ecoecho® Brick Box	Brown	200x140x45	1100	1x300
13	188102	Viking ecoecho® Slim Brick Lid with window	Brown	225x85x30	-	1x300
14	188101*	Viking ecoecho® Slim Brick Lid	Brown	225x85x30	-	1x300
15	188100*	Viking ecoecho® Slim Brick Box	Brown	225x85x75	1100	1x300

* Microwarmable





CARDBOARD/PLA BOXES & BAGS

- FSC®-certified cardboard
- Crystal clear window
- Made out of 100% renewable resources



Material: Cardboard/PLA/Cellulose max +40°C

ecoecho®



No.	Article	Description	Colour	Material	Size (mm) LxWxH	Volume (ml)	Qty/ Cart.
1	159908	Meal Box with Window ecoecho®	Brown	Cardb./PLA	120x110x45	450	1x200
2	159910	Meal Box with Window ecoecho®	Brown	Cardb./PLA	200x120x45	900	1x250
3	159909	Meal Box with Window ecoecho®	Brown	Cardb./PLA	200x155x45	1200	1x200
4	159911	Wrap Box with Window ecoecho®	Brown	Cardb./PLA	90x50x130	550	1x1000
5	159912	Sandwich Box (double wedge) with Window ecoecho®	Brown	Cardb./PLA	175x75x90	590	1x500
6	159913	Roll/Bagel/Muffin Bag ecoecho®	Brown	Cardb./ Cellulose	280x150x55	-	1x1000
7	159914	Baguette Bag ecoecho®	Brown	Cardb./ Cellulose	355x100x55	-	1x1000

CARDBOARD/ PLA BOWLS

- Eco-conscious material
- Customisable



6

Material: Cardboard/PLA max +100°C
CPLA max +100°C

ecoecho®



No	Article	Description	Colour	Material	Size LxWxH (mm)	Volume (ml)	Qty/Cart.
1	170732*	Cardboard Bowl ecoecho®	Brown	Cardb./PLA	90x90x62	250	8x50
2	170733	CPLA Lid for 170732 ecoecho®	White	CPLA	95x95x10	-	16x50
3	170734	Cardboard Bowl ecoecho®	Brown	Cardb./PLA	115x115x63	400	10x50
4	170735	Cardboard Bowl ecoecho®	Brown	Cardb./PLA	115x115x77	550	10x50
5	170736	Cardboard Bowl ecoecho®	Brown	Cardb./PLA	115x115x148	950	10x50
6	170737	CPLA Lid for 170734/170735/170736 ecoecho®	White	CPLA	120x120x10	-	16x50

*Sealable with DF5 concept. Order insert with article no. 191377.

VIKING

- No need to fold boxes or lids
- Modular, stackable and microwarmable
- Tapered edges ensure great leak-resistance
- Expand when filled for tight-fitting lid



Material: Cardboard/PE max +100°C

No.	Article	Description	Colour	Size (mm) LxWxH	Volume (ml)	Qty/ Cart.
1	188058	Viking Cube Lid	Brown	113x113x29	-	300
2	188057	Viking Cube Low Box	Brown	113x113x50	510	300
3	188056	Viking Cube High Box	Brown	113x113x100	820	300
4	188055	Viking Block Lid	Brown	140x140x29	-	300
5	188054	Viking Block Box	Brown	140x140x75	1200	300
6	188053	Viking Brick Lid	Brown	200x140x30	-	300
7	188052	Viking Brick Box	Brown	200x140x45	1100	300
8	188051	Viking Slim Brick Lid	Brown	225x85x30	-	300
9	188050	Viking Slim Brick Box	Brown	225x85x75	1100	300



↑
ONE LID MATCHES
BOTH BOXES
↓





Add a flexible finishing touch: we now offer profile printed stickers & adhesive sleeves that enable you to promote your brand on-the-go.



CARDBOARD/PE SALAD BOWLS

- Crystal clear lid
- Customisable bowl

Material: Cardboard/PE max +40°C
APET max +40°C



No.	Article	Description	Colour	Material	Size (mm) LxWxH	Volume (ml)	Qty/ Cart.
1	168000	Salad Bowl	White	Cardboard/PE	124x124x73	625	13x45
2	168003	Lid for 168000	Transparent	APET	134x134x9	-	8x100
3	168001	Salad Bowl	White	Cardboard/PE	150x150x60	775	9x58
4	168004	Lid for 168001	Transparent	APET	158x158x20	-	5x78
5	168002	Salad Bowl	White	Cardboard/PE	184x184x65	1260	6x46
6	169483	Salad Bowl	Brown	Cardboard/PE	184x184x65	1260	1x276
7	168005	Lid for 168002/ 169483	Transparent	APET	190x190x28	-	4x80



CARDBOARD/PE BASIC SOUP BOWLS

Material: Cardboard/PE max +100°C
PP max +100°C



No.	Article	Description	Material	Size(mm) LxWxH	Volume (ml)	Qty/ Cart.
1	170620	Soup Bowl	Cardboard/PE	90x90x62	250	8x50
2	170621	Lid for 170620	PP	95x95x15	-	16x50
3	170622	Soup Bowl	Cardboard/PE	115x115x63	400	10x50
4	170623	Soup Bowl	Cardboard/PE	115x115x77	550	10x50
5	170624	Soup Bowl	Cardboard/PE	115x115x148	950	10x50
6	170625	Lid for 170622/170623/ 170624	PP	120x120x15	-	10x50



CARDBOARD SOUP BOWLS & WOK BOX

- Lids with venting holes for steam release
- Some soup bowls can be sealed with DF5 for leak- and tamper-proof closure
- Customisable bowls, lids & box

Material: Cardboard/PP max +120°C (microwarmable)
Cardboard/PE max +70°C



No.	Article	Description	Material	Size (mm) LxWxH	Volume (ml)	Qty/ Cart.
1	168006	Soup Bowl* **	Cardboard/PP	91x91x85	355	20x25
2	168010	Lid for 168006	Cardboard/PE	90x90x17	-	24x18
3	168007	Soup Bowl* **	Cardboard/PP	97x97x99	485	24x40
4	168011	Lid for 168007	Cardboard/PE	97x97x16	-	20x25
5	168008	Soup Bowl*	Cardboard/PP	115x115x107	775	10x25
6	168009	Soup Bowl*	Cardboard/PP	115x115x142	1030	20x25
7	168012	Lid for 168008/168009	Cardboard/PE	116x116x20	-	10x25
8	168013	Wok Box	Cardboard/PE	95x95x110	810	15x29



* Microwarmable ** Sealable with the DF5 machine. Order insert with article no. 191377.



POLARDELI MINIMALIST DESIGN MAXIMUM PERFORMANCE

Polardeli boxes bring a fresh perspective to mindful packaging design. Ideal for delis, they protect chilled food while their transparent, recycled PET material makes it look delicious. Even better, they offer top-tier functionality and work with Duniform® sealing machines and lids.

 WATCH THE MOVIE

Check out the Polardeli movie at Duni.com/Polardeli



POLARDELI

- Made from up to 100% recycled PET
- Ideal for delis
- Matching stackable lids



ecoecho®



Material: RPET -40°C to +70°C

No	Article	Description	Cassette	Sealing film	Size (mm) LxWxH	Volume (ml)	Qty/Cart.
1	187030	Polardeli mini	187027 DF10/20 (4 cavities) 187037 DF15/25 (6 cavities)	162800	102x80x24	100	1x720
2	187031	Polardeli petit	187028 DF10/20 (1 cavities) 187036 DF15/25 (2 cavities)	162800	175x115x29	300	1x780
3	187032	Polardeli medio	187028 DF10/20 (1 cavities) 187036 DF15/25 (2 cavities)	162800	175x115x48	500	1x576
4	187033	Polardeli grand	187028 DF10/20 (1 cavities) 187036 DF15/25 (2 cavities)	162800	175x115x69	750	1x450
5	187034	Polardeli lid mini	-	-	108x86x18	-	1x630
6	187035	Polardeli lid	-	-	181x121x18	-	1x625





CRYSTAL DELI

- Top quality with exceptional clarity
- Up to 100% recycled material
- Accentuates beauty of food
- One convenient lid fits all sizes
- Efficient lid application

Material: RPET max +70°C

ecoecho®



No.	Article	Description	Size (mm) LxWxH	Volume (ml)	Qty/ Cart.
1	177065	Crystal Deli ecoecho®	116x116x44	250	10x35
2	177066	Crystal Deli ecoecho®	116x116x61	375	10x35
3	177067	Crystal Deli ecoecho®	116x116x75	500	10x35
4	177068	Crystal Deli ecoecho®	116x116x107	750	10x35
5	177069	Crystal Deli lid ecoecho®	120x120x14	-	10x35



1



2



3



4



5





FIXPACK®

- Sturdy
- Lids fit multiple containers
- Suitable for hot food

Material: APET max +70°C
PP max +120°C (microwarmable)



No.	Article	Description	Material	Size (mm) LxWxH	Volume (ml)	Qty/ Cart.
1	161088	Dressing Cup	APET	80x80x46	110	20x50
2	161089	Lid for 161088	APET	93x93x9	-	20x50
3	159141	Fixpack® Round	PP	112x112x40	200	14x50
4	159142	Fixpack® Round	PP	112x112x61	300	14x50
5	159143	Lid for 159141/159142/160510	PP	112x112x6	-	14x50
6	159144	Fixpack® Rectangular	PP	146x110x41	350	10x50
7	159145	Fixpack® Rectangular	PP	146x110x54	500	10x50
8	160512	Fixpack® Rectangular	PP	146x110x83	750	10x50
9	159146	Lid for 159144/159145/160512	PP	146x110x6	-	10x50
10	170513	Fixpack® Rectangular with Lid	PP	145x110x110	1000	10x25



DELIPACK

- Round Delipack can be sealed with Duniform®maschine DF5.
- Lids fit multiple containers
- Great stackability using lid closure

Material: PP max +100°C (microwarmable)



No.	Article	Description	Size (mm) LxWxH	Volume (ml)	Qty/ Cart.
1	156421*	Delipack Round	101x101x30	125	20x50
2	156422*	Delipack Round	101x101x37	200	20x50
3	156423*	Delipack Round	101x101x48	250	20x50
4	156424*	Delipack Round	101x101x61	300	20x50
5	156425*	Delipack Round	101x101x102	500	20x50
6	156426	Lid for 156421/156425	101x101x10	-	20x50
7	156427	Delipack Rectangular	108x82x30	125	20x50
8	156428	Delipack Rectangular	108x82x50	250	20x50
9	156429	Lid for 156427/156428/156430/156420	108x82x10	-	20x50

*Sealable with the Duniform®maschine DF5. Order cassette with article no. 191382.





PLA SALAD BOWLS

- Compostable
- Made out of 100% renewable resources
- Superb transparency

Material: PLA max +40°C

ecoecho®



No.	Article	Description	Size (mm) LxWxH	Volume (ml)	Qty/ Cart.
1	159862	PLA Salad Bowl ecoecho®	220x220x45	700	6x45
2	159863	PLA Salad Bowl ecoecho®	220x220x60	950	6x45
3	159864	PLA Lid for 159862/159863 ecoecho®	230x230x30	-	6x45



BASIC SALAD BOWLS

Material: PS max +70°C



No.	Article	Description	Colour	Size (mm) LxWxH	Volume (ml)	Qty/ Cart.
1	102970	Salad Bowl	Transparent	180x180x75	1000	6x50
2	102971	Lid for 102970/168741	Transparent	186x186x12	-	6x50





SALAD BOWLS WITH FORK

- Fork included in selected bowls
- Hinged lid
- Crystal clear transparency



Material: APET max +70°C

No.	Article	Description	Size (mm) LxWxH	Vol (ml)	Qty/ Cart.
1	161175	Salad Bowl with Fork	178x115x48	350	1x400
2	161176	Salad Bowl with Fork	190x140x52	500	1x200
3	161177	Salad Bowl with Fork	190x140x70	750	1x200
4	161178	Salad Bowl	190x140x70	1000	1x144



SUSHI & LUNCH BOXES

- High lid for great food protection
- Hinged lid

Material: PS max +100°C
PP max +100°C



No.	Article	Description	Colour	Material	Comp	Size (mm) LxWxH	Volume (ml)	Qty/ Cart.
1	144209	Sushi Box	Black/Transparent	PS	1	185x135x54	500	1x200
2	170307	Lunch Box	Black/Transparent	PS	1	185x135x54	500	1x200
3	172632	Lunch Box	Black/Transparent	PS	1	270x135x54	750	1x160
4	127806	Lunch Box	Blue/Transparent	PS	1	272x188x53	1100	1x160
5	127803	Lunch Box	White/Transparent	PS	1	338x250x63	1800	1x100



OCTAVIEW®
GREAT DESIGN.
MADE EVEN GREATER.

Passionate about getting every little detail right, we have introduced many subtle refinements to the new Octaview® take-away boxes. These make them even more eye-catching, even more of a pleasure to use, and even more convenient.

► **WATCH THE MOVIE**
Check out the Octaview movie
at duni.com





OCTAVIEW® COLD USE

- Contemporary design language
- Top-quality APET material
- Crystal clear hinged lid
- Secure closing with haptic click
- Smart stack system



Material: APET max +70°C

No.	Article	Description	Comp	Size (mm) LxWxH	Volume (ml)	Qty/ Cart.
1	188018	Octaview® S	1	150x150x70	400	1x400
2	188019	Octaview® M	1	185x185x70	625	1x255
3	188020	Octaview® M+	1	185x185x90	800	1x255
4	188021	Octaview® L	1	225x225x65	925	1x100
5	188022	Octaview® L+	1	225x225x80	1150	1x100





OCTAVIEW® COLD USE

- Hinged lid
- Tear-off function on selected boxes*
- Suitable for cold food
- Secure dressing glass in selected boxes



Material: PS max +70°C

No.	Article	Description	Comp	Size (mm) LxWxH	Volume (ml)	Qty/ Cart.
1	866013	Octaview®	1	118x118x60	200	1x375
2	148055	Octaview® (C&C-packed 866013)	1	118x118x60	200	8x35
3	116630	Octaview®	1	118x118x80	265	1x375
4	127765	Octaview®	1	160x160x60	400	1x405
5	163226	Octaview® (C&C-packed 127765)	1	160x160x60	400	9x20
6	127763	Octaview®	1	160x160x80	580	1x405
7	149867	Octaview® with glass	1	160x160x60	450/65	1x360
8	127800	Octaview®*	1	190x190x60	640	1x270
9	157573	Octaview® (C&C-packed 127800)*	1	190x190x60	640	6x35
10	127801	Octaview®*	1	190x190x80	850	1x270
11	157541	Octaview® with glass*	1	190x190x70	950/90	1x240
12	157571	Octaview® (C&C-packed 157541)*	1	190x190x70	950/90	6x35
13	127766	Octaview®*	1	230x230x50	1000	1x190
14	157572	Octaview® (C&C-packed 127766)*	1	230x230x50	1000	4x35
15	127767	Octaview®*	1	230x230x80	1300	1x180
16	149868	Octaview® with glass*	1	230x230x70	1250/65	1x160
17	149873	Octaview®*	1	305x305x60	1800	1x75
18	149874	Octaview®*	1	305x305x80	2500	1x75
19	118846	Octaview® insert for 149873/149874	7	284x284x25	140/6x180	1x150





OCTAVIEW® & OCTABOWL® HOT USE

- Hinged lid
- Suitable for hot food
- Lids with tear-off function

Material: PS max +100°C
(microwarmable)



No.	Article	Description	Comp	Size (mm) LxWxH	Volume (ml)	Qty/ Cart.
1	149871	Octaview®	1	160x160x80	580	1x405
2	148049	Octaview® (C&C-packed 149871)	1	160x160x80	580	6x35
3	149864	Octabowl®	1	160x160x72	500	1x405
4	149869	Octaview®	2	190x190x60	350/200	1x290
5	149865	Octabowl®	1	190x190x71	700	1x290
6	163227	Octabowl® (C&C-packed 149865)	1	190x190x71	700	9x20
7	149870	Octaview®	2	230x230x50	580/280	1x170
8	163228	Octaview® (C&C-packed 149870)	2	230x230x50	580/280	5x30
9	149872	Octaview®	3	650/220/220	220/220/650	1x160
10	163229	Octaview® (C&C-packed 149872)	3	650/220/220	220/220/650	5x30
11	149866	Octabowl®	1	230x230x72	1050	1x170

Add a flexible finishing touch: we now offer profile printed stickers & adhesive sleeves that enable you to promote your brand on-the-go.





DUNI GOURMET® COLD USE

- Suitable for cold food
- Excellent shelf display
- Crystal clear lid

Material: APET max +70°C



No.	Article	Description	Colour	Size (mm) LxWxH	Volume (ml)	Qty/ Cart.
1	159114	Gourmet® Cold	Black	197x197x33	750	1x450
2	159115	Gourmet® Cold	Transparent	197x197x44	1000	1x450
3	159853	Gourmet® Cold	Black	197x197x44	1000	1x450
4	159112	Lid for 159114/159115/159853	Transparent	198x198x18	-	1x450



1



2



3



4



DUNI GOURMET® HOT USE

- Suitable for hot food
- Excellent shelf display
- Crystal clear lid

Material: PP max +120°C (microwarmable)
APET max +70°C



No.	Article	Description	Colour	Material	Size (mm) LxWxH	Volume (ml)	Qty/ Cart.
1	163222	Gourmet® Hot	Black	PP	197x197x33	750	1x450
2	163223	Gourmet® Hot	Black	PP	197x197x44	1x450	
3	159112	Lid for 163222/163223	Transparent	APET	198x198x18	-	1x450



1



2



3



DUNI TRIGO® COLD USE

- Suitable for cold food
- Eye-catching design
- Crystal clear lid



Material: APET max +70°C

No.	Article	Description	Colour	Size (mm) LxWxH	Vol (ml)	Qty/ Cart.
1	162463	Trigo® Cold	Transparent	195x195x72	950	1x250
2	162464	Trigo® Cold	Black	195x195x72	950	1x250
3	162465	Lid for 162463/162464	Transparent	195x195x14	-	1x250



1



2



3

MEAL BOXES

- Suitable for hot food
- Venting holes in the lid for steam release
- One lid fits all



Material: PP max +120°C (microwarmable)

No.	Article	Description	Colour	Comp	Size (mm) LxWxH	Volume (ml)	Qty/ Cart.
1	161182	Meal Box	Black	1	240x150x40	800	5x50
2	161179	Meal Box	Black	2	240x150x40	500/250	5x50
3	161180	Meal Box	Black	3	240x150x40	500/2x110	5x50
4	161181	Lid for 161182/161179/ 161180	Transparent	-	240x150x20	-	5x50



1



2



3



4

SOUP BOWLS

- Handles to prevent burned hands

Material: PS max +100°C (microwarmable)
 PP/MIN max +120°C (microwarmable)
 PP max +120°C (microwarmable)



No.	Article	Description	Colour	Material	Size(mm) LxWxH	Volume (ml)	Qty/ Cart.
1	119573	Soup Bowl	White	PS	149x122x50	275	10x100
2	177907	Bowl	Black	PP/MIN	153x153x45	350	1x480
3	177908	Bowl	Black	PP/MIN	153x153x60	500	1x480
4	177909	Bowl	Black	PP/MIN	153x153x70	650	1x480
5	177910	Lid for 177907-177909	Transparent	PP	159x159x22	-	1x480



DESSERT BOWLS

- Superb transparency

Material: PS max +100°C
 APET max +70°C



No.	Article	Description	Material	Size (mm) LxWxH	Volume (ml)	Qty/ Cart.
1	157175	Dessert Bowl	PS	85x85x45	180	20x50
2	157177	Lid for 157175	APET	90x90x10	-	20x50
3	157176	Dessert Bowl	PS	95x95x50	230	20x50
4	157178	Lid for 157176	APET	100x100x10	-	20x50
5	119568	Dessert Bowl	PS	104x104x40	250	20x75
6	118872	Lid for 119568	PS	106x106x14	-	15x100



DRESSING CUPS

- Superb transparency

Material: PS max +70°C
 APET max +70°C



No.	Article	Description	Colour	Material	Size (mm) LxWxH	Volume (ml)	Qty/ Cart.
1	111267	Dressing Cup	Transparent	PS	47x47x29	30	48x50
2	127762	Lid for 111267	Transparent	PS	50x50x5	-	1x2400
3	161088	Dressing Cup	Transparent	APET	80x80x46	110	20x50
4	161089	Lid for 161088	Transparent	APET	93x93x9	-	20x50



ECO DRESSING CUPS

- Compostable
- Made out of renewable by-products
- Crystal clear lids

Material: Bagasse max +100°C
RPET max +70°C
PLA max +40°C

ecoecho®



No.	Article	Description	OK Compost	Colour	Material	Size (mm) LxWxH	Volume (ml)	Qty/ Cart.
1	192065	Bagasse Dressing Cup ecoecho®	*	White	Bagasse	63x63x18	30	10x150
2	192066	Bagasse Dressing Cup ecoecho®	*	White	Bagasse	63x63x32	60	10x150
3	192067	Bagasse Dressing Cup ecoecho®	*	White	Bagasse	63x63x53	85	10x150
4	192068	Lid for 192065-67	*	White	Bagasse	70x8	-	10x150
5	180122	Dressing Cup		Transparent	RPET	64x64x30	60	25x100
6	180123	Lid for 180122		Transparent	RPET	66x66x7	-	25x100
7	159865	Dressing Cup		Transparent	PLA	62x62x30	60	12x250
8	159866	Lid for 169865-67 / 159865		Transparent	PLA	65x65x5	-	12x250
9	159867	Dressing Cup		Transparent	PLA	74x74x35	100	10x250
10	159868	Dressing Cup		Transparent	PLA	74x74x47	120	10x250
11	159869	Lid for 159867/159868		Transparent	PLA	78x78x6	-	10x250





Add a flexible finishing touch: we now offer profile printed stickers & adhesive sleeves that enable you to promote your brand on-the-go.

TAKE-AWAY BAGS

Material: Paper
HDPE



No.	Article	Description	Material	Colour	Size (mm) LxWxH	Volume (l)	Qty/ Cart.
1	174730	Take-away Bag without handles	Paper	Brown	180x110x265	5	1x500
2	169875	Take-away Bag	Paper	Brown	350x170x245	15	1x200
3	169876	Take-away Bag	Paper	White	350x170x245	15	1x200



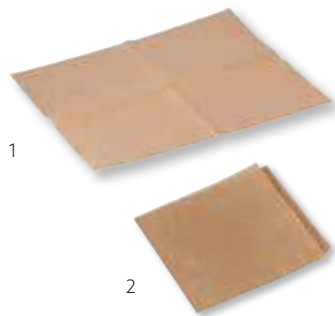
TAKE-AWAY PAPER AND POCKET

- Trendy
- Convenient on-the-go solution
- Grease resistant

Material: Paper/PE max +70°C



No.	Article	Description	Colour	Size (mm) LxWxH	Qty/ Cart.
1	174728	Sheet paper	Brown	330x410	1x1000
2	174729	Sandwich pocket	Brown	160x160	1x1000



SANDWICH BOXES

- Made out of recycled material
- Superb transparency
- Hinged lid

Material: RPET max +70°C

ecoecho®



No.	Article	Description	Size (mm) LxWxH	Volume (ml)	Qty/ Cart.
1	157108	Sandwich Wedge	160x65x85	500	1x500
2	157109	Sandwich Wedge	160x75x85	600	1x600
3	159567	Bagel Box	118x85x60	400	1x700



FINGER FOOD CONCEPT

- Contemporary
- Convenient solution



No.	Article	Description	Colour	Size LxWxH (mm)	Pack
1	174502	Dunisoft® Dispenser	White	200x200	24 x 50
2	174501	Dunisoft® Dispenser	White	200x200	12 x 100
3	183317	Dunisoft® Dispenser	Brown	200x200	24 x 50
4	174475	Paper Placemat	Neutral	200x300	4 x 250
5	187006	Ecoecho Paper Placemat	Brown	300x400	4x250
6	192105	Veggies Grass Paper Placemat	Brown	300x400	4x250
7	187005	Leaf Grass Paper Placemat	Brown	300x400	4x250
8	187069	Leaf Grass Paper Sacchetto	Brown	85x190	5x100
9	186992	Wet Towel Compostable	-	60x130	2x250
10	186993	Wet Towel Compostable	-	50x70	1x1000
11	187004	Cardboard Dispenser, Spunlace	-	50x70	4x250

SNACK SACCHETTO

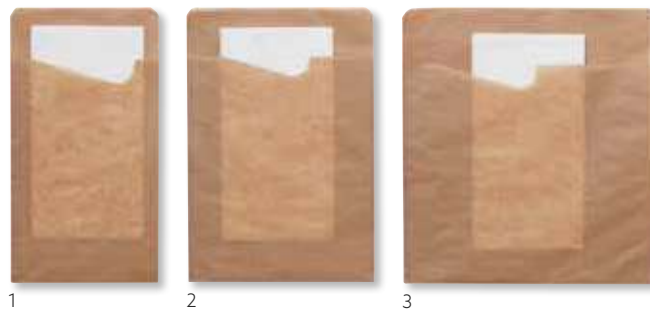
- Integrated napkin
- Convenient on-the-go solution
- Grease resistant
- FSC®-certified

Material: Grease paper +70°C

ecoecho®



No.	Article	Description	Colour	Size LxWxH (mm)	Qty/ Cart.
1	176567	Snack sachetto, with white 2ply napkin	Brown	113x210	1x350
2	176568	Snack sachetto, with white 2ply napkin	Brown	143x210	1x300
3	176569	Snack sachetto, with white 2ply napkin	Brown	194x210	1x300





AMAZONICA

- Celebrate food, form and function
- Eco-conscious collection crafted from mindful materials

Material: Bagasse max +100°C (microwarmable)
CPLA max +70°C

ecoecho®



No	Article	Description	Material	Size Ø (mm)	Volume (ml)	Qty/ Cart.
1	188070	Bagasse Plate 27 cm	Bagasse	270	-	10x25
2	188071	Bagasse Plate 19 cm	Bagasse	190	-	10x25
3	188072	Bagasse Bowl 47cl	Bagasse	-	470	10x35
4	188073	CPLA Fork 19 cm	CPLA	190	-	10x50
5	188074	CPLA Knife 19 cm	CPLA	190	-	10x50
6	188075	CPLA Spoon 19 cm	CPLA	190	-	10x50
7	188076	CPLA Dessert spoon 12,5 cm	CPLA	125	-	10x50



Design by
Bernadotte & Kylberg





DUNI AMUSE-BOUCHE® BAGASSE

- Compostable
- Made out of renewable by-products
- Lids made out of crystal clear material

Material: Bagasse max +100°C (microwarmable)
RPET max +70°C



No.	Article	Description	Material	Size (mm) LxWxH	Volume (ml)	Qty/ Cart.
1	181824	Folio	Bagasse	90x50x30	30	12x40
2	181825	Duo	Bagasse	180x110x20	60	12x40
3	181822	Piatto	Bagasse	170x100x40	140	11x35



1

2

3



DUNI AMUSE-BOUCHE®

- Eye-catching design
- Superb transparency

Material: PS max +100°C
PET max +70°C

No.	Article	Description	Material	Size (mm) LxWxH	Volume (ml)	Qty/ Cart.
1	159721	Square Large	PS	57x57x67	150	6x38
2	157492	Tri	PS	55x55x45	45	6x90
3	159722	Tri Large	PS	62x62x68	110	6x54
4	157497	Organic Puzzle	PS	53x53x45	50	6x100
5	123454	Organic Puzzle Large	PS	64x64x68	125	4x68
6	157491	Square	PS	47x47x45	60	6x100



DUNI AMUSE-BOUCHE®

- Eye-catching design
- Superb transparency

Material: PS max +100°C
PET max +70°C

No.	Article	Description	Colour	Size (mm) LxWxH	Volume (ml)	Qty/ Cart.
1	123457	Taster	Transparent	75x45x28	25	6x135
2	170761	Taster	Black	75x45x28	25	6x135
3	157487	Lake	Transparent	97x60x16	35	6x90
4	170753	Plato	Black	95x95x11	-	6x132
5	170758	Folio	Transparent	89x51x25	15	6x156
6	170759	Folio	Black	89x51x25	15	6x156

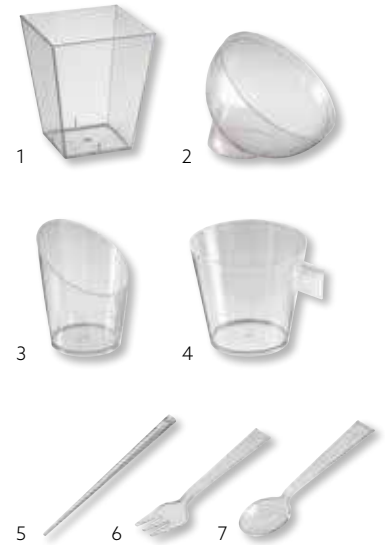


DUNI AMUSE-BOUCHE®

- Eye-catching design
- Superb transparency

Material: PS max +100°C

No.	Article	Description	Colour	Material	Size (mm) LxWxH	Volume (ml)	Qty/ Cart.
1	167275	Square Large	Transparent	PS	68x68x70	200	15x45
2	157489	Globe	Transparent	PS	68x68x55	25	6x30
3	157488	Food Tube	Transparent	PS	45x58	35	6x65
4	157493	Espresso	Transparent	PS	48x45	50	6x48
5	159720	Stick	Transparent	PS	90	-	6x1200
6	157502	Mini Fork	Transparent	PS	96x18x4	-	6x250
7	157503	Mini Spoon	Transparent	PS	96x18x4	-	6x250



DUNI AMUSE-BOUCHE®

- Ideal for larger events, value packs simplify handling
- Conveniently packed
- Fits to Duni Amuse-bouche display solutions

Material: PS max +100°C

No.	Article	Description	Colour	Material	Size (mm) LxWxH	Volume (ml)	Qty/ Cart.
1	173025	Square	Transparent	PS	47x47x45	60	40x25
2	173084	Square Large	Transparent	PS	57x57x67	150	24x25



DUNI AMUSE-BOUCHE®

- Safe transport
- Modular system
- Perfect for pre-packed offers

Material: Cardboard/PE window max +100°C



No.	Article	Description	Material	Size (mm) LxWxH	Qty/ Cart.
1	165207	Catering Transport Box Small	Cardboard/PE	360x250x80	10x10
2	165206	Catering Transport Box Medium	Cardboard/PE	460x310x80	10x10
3	165205	Catering Transport Box Large	Cardboard/PE	550x365x80	7x10
4	165208	Catering Box Insert Small for 15pc	Cardboard/PE	357x247x30	10x10
5	165209	Catering Box Insert Medium for 24pcs Containers	Cardboard/PE	457x307x30	10x10



BAGASSE PLATES

- Compostable
- Made from natural by-products
- Full range offer in white and brown bagasse



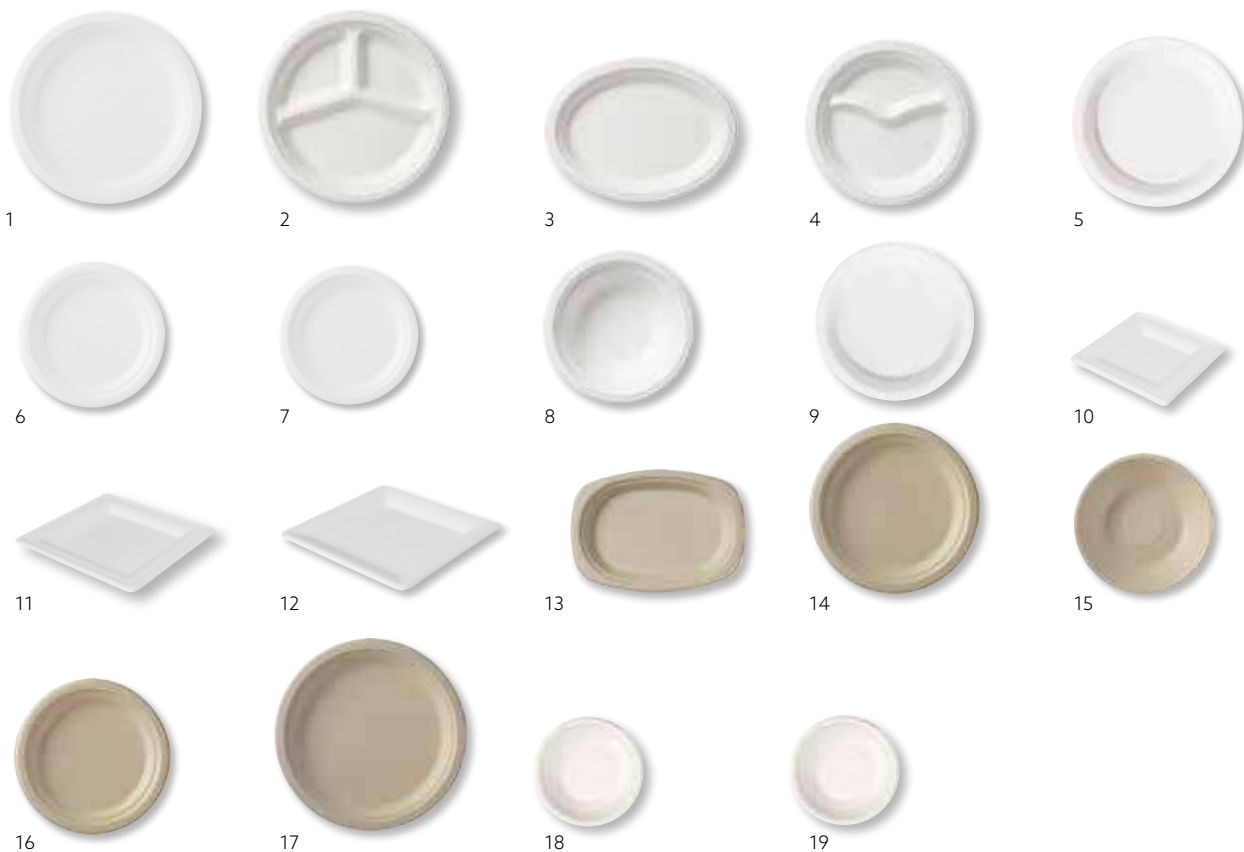
Material: Bagasse
max +100°C (microwarmable)

ecoecho®



No.	Article	Description	OK Compost	Colour	Volume (ml)	Size Ø (mm)	Qty/ Cart.
1	161204	Dinner Plate	*	White	-	260	8x50
2	172499	Dinner Plate 3 Comp.	*	White	-	260	10x50
3	172504	Dinner Plate Oval	*	White	-	260	2x125
4	172498	Dinner Plate 2 Comp.	*	White	-	220	10x50
5	161205	Dinner Plate	*	White	-	220	8x50
6	161207	Dessert Plate	*	White	-	170	10x50
7	164768	Dessert Plate	*	White	-	150	8x125
8	172505	Soup Plate	*	White	450	180	20x50
9	161206	Soup Plate	*	White	300	160	10x50
10	182545	Square Plate	*	White	-	160x160	20x50
11	182546	Square Plate	*	White	-	200x200	10x50
12	182547	Square Plate	*	White	-	260x260	10x50
13	157179	Dinner Plate Oval		Brown	-	220	10x50
14	157180	Dinner Plate		Brown	-	220	9x50
15	157181	Soup Plate		Brown	350	160	10x50
16	157182	Dinner Plate		Brown	-	180	8x50
17	157183	Dinner Plate		Brown	-	260	10x50
18	193578	Demo Plate		White	-	77x15	30x100
19	193579	Demo Plate	*	White	-	99x17	40x50

* = OK Compost Home





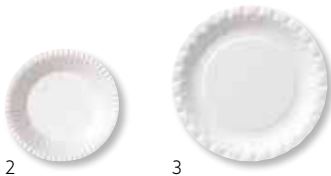
PLATES





OUR PAPER PLATES ARE FSC®-CERTIFIED AND MADE OF VIRGIN FIBRES

The Forest Stewardship Council®, FSC®, is an international organisation which promotes ecologically responsible, socially responsible and economically viable use of the world's forests. Requirements include respect for the rights of indigenous people and ensuring that biologically valuable forests are managed in such a way that their natural value is preserved.



WATER-COATED PAPER PLATES

- Virgin fibres
- Water-based coating
- All plates are FSC®-certified



Material: Paper max +80°C

No.	Article	Description	Colour	Size Ø (mm)	Qty/ Cart.
1	193511	Lunch Plate	White	180	5x100
2	193512	Soup Plate (300ml)	White	180	20x50
3	192060	Dinner Plate	White	220	4x100

PAPER PLATES

- Virgin fibres
- All plates are FSC®-certified

Material: Paper max +80°C



No.	Article	Description	Colour	Size Ø (mm)	Qty/ Cart.
1	142980	Sausage Plate	White	130x200	4x250
2	794506	Demo Plate	White	90	1x2000
3	192059*	Snacking Plate	White	150	10x100
4	193510*	Lunch Plate	White	180	5x100
5	192061*	Dinner Plate	White	220	4x100

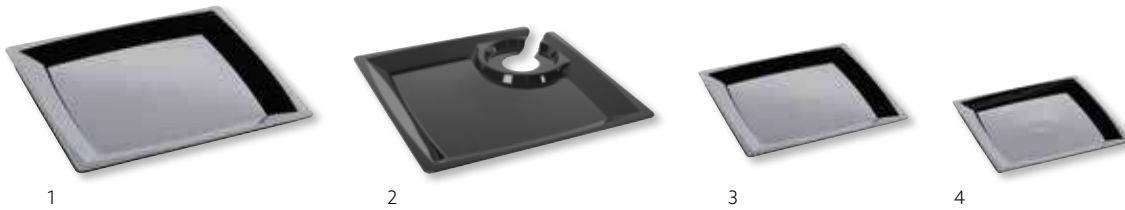
* = Nordic Swan certified

MILAN PLATES

- The ideal complement to porcelain
- Superb stability
- Good stacking, saves space on buffet table

Material: PS max +100°C

No.	Article	Description	Colour	Size (mm)	Volume (ml)	Qty/ Cart.
1	165188	Milan Dinner Plate Extra Large	Black	240x240	-	16x12
2	167563	Milan Cocktail Plate Large with Hole	Black	210x210	-	16x12
3	165192	Milan Sidedish Plate Medium	Black	170x170	-	16x24
4	165196	Milan Dessert Plate Small	Black	140x140	-	16x24



PLASTIC PLATES

Material: PS max +70°C
APET max +70°C

No.	Article	Description	Colour	Material	Size Ø (mm)	Qty/ Cart.
1	182850	Dinner Plate Deep	White	PS	180	10x50
2	182852	Dinner Plate	Black	PS	220	10x50
3	182851	Dinner Plate	White	PS	220	10x50
4	182853	Dinner Plate	White	PS	260	10x50
5	182854	Dinner Plate	Black	PS	260	10x50
6	163489	Dinner Plate Extra Strong	White	PS	230	6x20
7	152116	Dessert Plate	White	PS	180	10x50
8	461900	Egg Cup	White	PS	100	23x100
9	408500	Demo Plate	White	PS	100	23x150
10	170790	Cocktail Plate Extra Strong with Hole	Transparent	PS	200x200	1x10



WOODEN CUTLERY BUILT BY FORESTS. DESIGNED BY DUNI.



WOODEN CUTLERY

- Made out of 100% Birch Wood
- No wax or lamination
- Sturdy design

Material: Wood max +70°C

ecoecho® **NEW**

No.	Article	Description	Colour	Size (mm)	Qty/ Cart.
1	187667	Wooden Fork	Natural	160	10x100
2	187668	Wooden Knife	Natural	160	10x100
3	187669	Wooden Spoon	Natural	160	10x100
4	187670	Wooden Coffee Spoon	Natural	110	10x100
5	192220**	Wooden Chips Fork	Natural	85	5x1000
6	192221**	Wooden Ice Cream Spoon	Natural	95	10x100
7	187671*	Eco Cutlery Packs, Wooden Fork & Knife, Brown Napkin	Natural	160/160	1x500

* ean code on 187671 cu pack

**= Available from February 2020



WAXED WOODEN CUTLERY

- Thin layer of natural biobased wax
- A smooth, clean feeling
- Made of 100% Birch Wood
- Sturdy and long design

Material: Waxed wood max +70°C

BioPak® **NEW**
It doesn't cost the earth

No.	Article	Description	Colour	Size (mm)	Qty/ Cart.
1	192152	Wooden Fork	Natural	190	10x100
2	192153	Wooden Knife	Natural	190	10x100
3	192154	Wooden Spoon	Natural	190	10x100
4	192155	Wooden Coffee Spoon	Natural	110	20x100
5	192222*	Wooden Spork	Natural	147	20x100
6	192156	Knife, Fork, Natural coloured Napkin	Natural	190/190	1x400

* = Available from February 2020



AMAZONICA

- Celebrate food, form and function
- Eco-conscious collection crafted from mindful materials
- Design by Bernadotte & Kylberg

Material: CPLA max +100°C

ecoecho®



No	Article	Description	Colour	Size Ø (mm)	Volume (cl)	Qty/ Cart.
1	188073	CPLA Fork Amazonica	White	190	-	10 x 50
2	188074	CPLA Knife Amazonica	White	190	-	10 x 50
3	188075	CPLA Spoon Amazonica	White	190	-	10 x 50
4	188076	CPLA Dessert spoon Amazonica	White	125	-	10 x 50



CPLA CUTLERY

- Made out of 100% renewable material
- 100% compostable according to EN13432
- Sturdy design



Material: CPLA max +100°C

ecoecho®



No.	Article	Description	OK Compost	Colour	Size (mm)	Qty/ Cart.
1	168642	CPLA Fork Large, Glossy	-	White	185	10x100
2	168641	CPLA Knife Large, Glossy	-	White	185	10x100
3	168643	CPLA Spoon Large, Glossy	-	White	185	10x100
4	168851	Eco Cutlery Pack CPLA Fork & Knife Large, White Napkin.	-	White	185/185	1x250
5	187680	CPLA Fork Petit, Matte	*	White	150	10x100
6	187681	CPLA Knife Petit, Matte	*	White	150	10x100
7	187682	CPLA Spoon Petit, Matte	*	White	150	10x100
8	187683*	Eco Cutlery Pack Fork & Knife Petit, White Napkin	*	White	150/150	1x250



* ean code on 187683 cu pack

FLAIR CUTLERY

• The ideal complement to silverware

Material: PS max +100°C

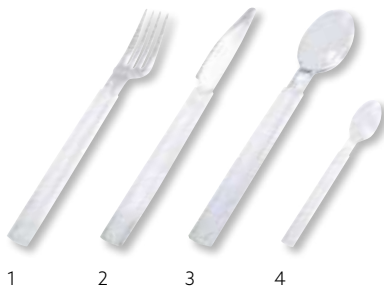


No.	Article	Description	Colour	Size (mm)	Qty/ Cart.
1	159729	Flair Fork	Silver	190	10x40
2	159728	Flair Knife	Silver	200	10x40
3	159730	Flair Spoon	Silver	190	10x40
4	163112	Flair Dessert Spoon	Silver	130	8x100
5	159731	Flair Mini Fork	Silver	110	50x40
6	159732	Flair Mini Spoon	Silver	110	50x40

LIBRA CUTLERY

• Extra Sturdy design

Material: PS max +100°C



No.	Article	Description	Colour	Size (mm)	Qty/ Cart.
1	161190	Libra Fork	Transparent	190	20x40
2	161192	Libra Knife	Transparent	190	20x40
3	161194	Libra Spoon	Transparent	180	20x40
4	161196	Libra Coffee Spoon	Transparent	130	20x40

VICTORIA CUTLERY

• Sturdy design

Material: PS max +100°C



No.	Article	Description	Colour	Size (mm)	Qty/ Cart.
1	154866	Victoria Fork	Transparent	190	10x50
2	154865	Victoria Fork	Transparent	190	1x1000
3	154863	Victoria Knife	Transparent	190	10x50
4	154864	Victoria Knife	Transparent	190	1x1000
5	154867	Victoria Spoon	Transparent	190	10x50
6	154870	Victoria Dessert Spoon	Transparent	160	10x50

BBQ CUTLERY

- Perfect for outdoor parties

Material: PS max +100°C

No.	Article	Description	Colour	Size (mm)	Qty/ Cart.
1	168339	BBQ Fork	Black	180	20x50
2	168340	BBQ Knife	Black	180	20x50



GRAND & PETIT CUTLERY

Material: PS max +100°C

No.	Article	Description	Colour	Size (mm)	Qty/ Cart.
1	154857	Grand Fork	White	180	30x100
2	154856	Grand Knife	White	180	30x100
3	154928	Grand Spoon	White	180	30x100
4	149136	Grand Coffee Spoon	White	125	30x100
5	154861	Petit Fork	White	165	30x100
6	154860	Petit Knife	White	165	30x100
7	154862	Petit Spoon	White	165	30x100
8	143583	Petit Coffee Spoon	White	115	8x250
9	118957	Chips Fork	Assorted colours	90	5x1000

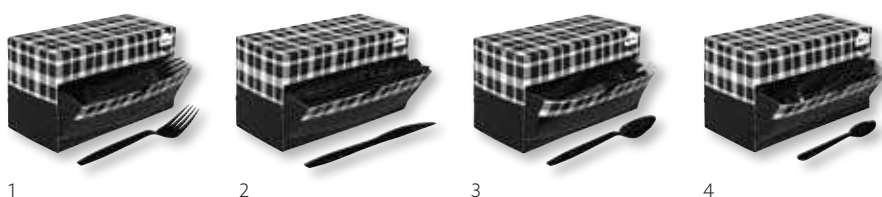


CUTLERY DISPENSERS

- Hygienic
- Secure stacking
- Practical
- Customisable box

Material: PS max +100°C

No.	Article	Description	Colour	Size (mm)	Qty/ Cart.
1	170895	Dispenser box BBQ Fork	Black	180	8x100
2	170896	Dispenser box BBQ Knife	Black	180	8x150
3	170897	Dispenser box BBQ Spoon	Black	180	8x100
4	170898	Dispenser box BBQ Coffee Spoon	Black	130	8x300



1

2

3

4



1 New

2 New

3



4 New

ECO CUTLERY PACKS

- Made out of 100% renewable resources
- Convenient and hygienic

Material: CPLA max +70°C

ecoecho®

No.	Article	Description	Colour	Size (mm)	Qty/ Cart.
1	187671*	Eco Cutlery Pack, Wooden Fork & Knife, Brown Napkin	Natural	160/160	1x500
2	187683*	Eco Cutlery Pack with Fork & Knife Petit, White Napkin	White	150/150	1x250
3	168851	Eco Cutlery Pack with CPLA Fork & Knife Large, White Napkin.	White	185/185	1x250
4	192156	Knife, Fork, Natural coloured Napkin	Natural	190/190	1x400

* Ean code on 187671 and 187683 cu pack

PREMIUM CUTLERY PACKS

- Coloured Dunisoft® and tissue napkins
- Superior quality
- Convenient and hygienic
- Barcode on cutlery pack

Material: PS max +100°C



1

2

3

4

No.	Article	Description	Colour	Size (mm)	Qty/ Cart.
1	195004	Knife, Fork, Cream Dunisoft® Napkin	Transparent	190/180	1x300
2	169406*	Knife, Fork, Spoon, White Napkin	Transparent	190/180/170	1x250
3	195000	Knife, Fork, Green Napkin	White	160/160	1x250
4	195001	Knife, Fork, Black Napkin	White	160/160	1x250

* Cutlery pack without barcode

CUTLERY PACKS

- Convenient and hygienic
- Barcode on cutlery pack



Material: PS max +100°C

No.	Article	Description	Colour	Size (mm)	Qty/ Cart.
1	119007*	Knife, Fork	Transparent	190/185	1x600
2	164498*	Knife, Fork	White	165/165	250x1
3	111278	Knife, Fork, White Napkin	White	160/160	250x1
4	119025	Knife, Fork, Coffee Spoon, White Napkin	White	160/160/125	250x1
5	119026	Knife, Fork, Spoon, White Napkin	White	160/160/170	250x1
6	119030	Knife, Fork, Pepper/Salt, White Napkin	White	160/160	250x1
7	120616	Knife, Fork, Coffee Spoon, Pepper/Salt, White Napkin	White	160/160/125	250x1
8	111279	Knife, Fork, Spoon, Pepper/Salt, White Napkin	White	160/160/160	250x1

* Cutlery pack without barcode



CUTLERY SINGLE WRAPPED

- Convenient and hygienic



Material: PS max +100°C

No.	Article	Description	Colour	Size (mm)	Qty/ Cart.
1	169877	Soup Spoon	Transparent	165	250x1
2	153985	Knife	Transparent	195	250x1
3	153984	Fork	Transparent	195	250x1
4	153982	Spoon	Transparent	165	250x1
5	153983	Coffee Spoon	Transparent	125	250x1
6	135656	Soup Spoon	White	160	1000x1
7	135657	Fork	White	160	1000x1
8	158335	Coffee Spoon	White	125	1000x1



CHOPSTICKS

Material: Bamboo



No.	Article	Description	Colour	Size (mm)	Qty/ Cart.
1	169874	Chopsticks	Brown	203	20x100



1



BioPak is a new Duni Group brand with a focus on mindful packaging designed with the circular economy in mind. Join us in making a positive change!

BioPak Paper Straws are FSC® certified, plastic-free and practical – an eco-conscious solution for consumers who prefer to use a straw. They meet the BfR XXXVI standard and are recyclable as paper packaging. Available in a range of sizes and colours in 3-ply premium grade board, they match perfectly with the Duni Table Top collection.

BIOPAK PAPER STRAWS

- Hygienic and food safe
- Meet the high requirements of BfR XXXVI standard
- Renewable FSC® material
- Tasteless
- Suitable for cold and alcoholic drinks

Material: Paper, FSC®

BioPak
It doesn't cost the earth



NEW

No.	Article	Description	Colour	Material	Size(mm) Ø x L	Qty/ Cart.
1	193000	Paper Straw Ø8mm	White	Paper	Ø8 x 230	36 x 100
2	193001	Paper Straw Ø8mm	Granite Grey	Paper	Ø8 x 230	36 x 100
3	193002	Paper Straw Ø8mm	Black	Paper	Ø8 x 230	36 x 100
4	193003	Paper Straw Ø8mm	Craft	Paper	Ø8 x 230	36 x 100
5	193004	Paper Straw Ø8mm	Mellow Rose	Paper	Ø8 x 230	36 x 100
6	193005	Paper Straw Ø8mm	Plum	Paper	Ø8 x 230	36 x 100
7	193500	Paper Straw Single wrapped Ø8mm	White	Paper	Ø8 x 230	40 x 100
8	193501	Paper Straw Single wrapped Ø8mm	Craft	Paper	Ø8 x 230	40 x 100
9	193006	Paper Straw Ø6mm	Black	Paper	Ø6 x 210	30 x 200



1 New



2 New



3 New



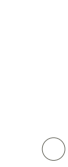
4 New



5 New



6 New



7 New



8 New



9 New





ECOECO® CRYSTAL GLASSES

- Glasses and inserts can be sealed with Duniform® machine DF5
- Less plastic needed with sealing option
- Glasses made from up to 100% recycled plastic bottles
- Excellent clarity and strong flexibility
- Print directly on the glass or attach a personalised sticker

Material: RPET 70°C

ecoeco®



No.	Article	Description	Colour	Volume (ml)	Qty/Cart.	DF5 cassette
1	188000	Crystal Glass	Transparent	300 (0,25l)	25x65	-
2	188001	Crystal Glass	Transparent	270	16x60	191380
3	188002	Crystal Glass	Transparent	360	16x60	191380
4	188003	Crystal Glass Insert for 188001 / 188002	Transparent	120	16x30	191377
5	188013	Crystal Glass Insert for 188001 / 188002	Transparent	180	16x30	191377
6	188004	Crystal Glass	Transparent	410 (0,3l)	16x50	191378
7	188005	Crystal Glass	Transparent	470 (0,4l)	16x50	191378
8	188006	Crystal Glass	Transparent	590 (0,5l)	16x50	191378
9	188014	Crystal Glass Insert for 188004 / 188005 / 188006	Transparent	250	16x50	191381
10	188007	Flat Lid (w cross) for 188000	Transparent	-	24x65	-
11	188008	Dome Lid (w hole) for 188000	Transparent	-	24x65	-
12	188009	Flat Lid (w cross) for 188001 / 188002	Transparent	-	16x60	-
13	177996	Flat lid (w/o hole) for 188001 / 188002	Transparent	-	16x60	-
14	177997	Dome lid (w/o hole) for 188001 / 188002	Transparent	-	16x60	-
15	188010	Dome Lid (w hole) for 188001 / 188002	Transparent	-	16x60	-
16	188011	Flat Lid (w cross) for 188004 / 188005 / 188006	Transparent	-	20x50	-
17	177998	Flat Lid (w/o hole) for 188004 / 188005 / 188006	Transparent	-	20x50	-
18	188012	Dome Lid (w hole) for 188004 / 188005 / 188006	Transparent	-	20x50	-
19	192161	Sip Lid for 188004 / 188005 / 188006	Transparent	-	10x100	-

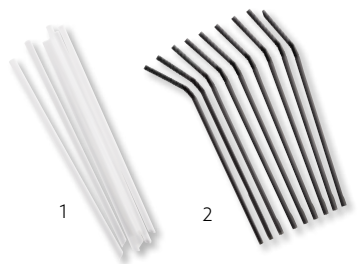




STRAWS

Material: PP max +70°C
PLA max +40°C (ecoecho®)

No.	Article	Description	Material	Colour	Size (mm)	Qty/ Cart.
1	153763	Straw	PLA	Transparent	210	100x100
2	155763	Straw with Flex	PP	Black	210	8x250





PLA GLASSES

- Compostable
- Made out of 100% renewable resources
- Superb transparency



ecoecho®



Material: PLA max +40°C



No.	Article	Description	OK Compost	Volume (ml)	Qty/ Cart.
1	191579	Wine Glass Château	*	140 (0,1l)	12x60
2	193755	Coupe Glass Crystallo	*	50 (0,04/0,05l)	85x40
3	157857	Glass	*	160	20x50
4	157858	Glass	*	250 (0,2l)	20x50
5	159717	Glass (hygiene packed)	*	250	1x500
6	157859	Glass	*	390 (0,3l)	20x50
7	157860	Glass	*	580 (0,4l)	16x40
8	158631	Dome Lid for 157860	-	-	6x40

* While stocks last

TREND GLASSES

Material: PS max +100°C
APET max +70°C



No.	Article	Description	Material	Volume (ml)	Qty/ Cart.
1	516301	Trend Shotglass	PS	50 (0,02/0,04l)	20x50
2	156406	Trend Glass	PS	100	20x50
3	155729	Trend Glass	PS	120 (0,1l)	20x50
4	153395	Trend Glass	PS	160	20x50
5	153396	Trend Glass	PS	250 (0,2l)	20x50
6	153397	Trend Glass	PS	300 (0,25l)	20x50
7	153398	Trend Glass	PS	390 (0,3l)	20x50
8	153399	Trend Glass	PS	620 (0,5l)	16x25
9	157175	Insert for 153397/153398	PS	180	20x50
10	153413	Flat Lid (w cross) for 153397/153398	APET	-	10x100
11	157177	Flat Lid for (w/o cross) for 153397/153398	APET	-	20x50
12	157178	Flat Lid for (w/o cross) for 153399	APET	-	20x50
13	167607	Dome Lid (w hole) for 153397/153398	APET	-	12x50
14	169210	Dome Lid (w/o hole) for 153397/153398	APET	-	12x50



CELEBRATION GLASSES

- The ideal complement to glassware
- Superb stability

Material: PS max +100°C

No.	Article	Description	Colour	Volume (ml)	Qty/ Cart.
1	165199	Celebration Champagne Glass	Transparent/Silver	150	12x12
2	165200	Celebration Wine Glass	Transparent/Silver	180	12x12
3	165201	Celebration Juice Glass	Transparent/Silver	300	12x12
4	168346	Celebration Dessert Cup	Transparent/Silver	80	6x100



1



2



3



4



PREMIUM GLASSES

- One-piece glasses – no assembly needed

Material: PS max +100°C

No.	Article	Description	Volume (ml)	Qty/ Cart.
1	185165	Millésime Wine Glass	100 (0,1l)	15x40
2	185166	Millésime Wine Glass	150	40x10
3	185167	Millésime Wine Glass	175	54x10
4	185168	Millésime Wine Glass	200 (0,2l)	40x10
5	155820	Wine Glass (one-piece)	230 (125/175)	6x18
6	101383	Wine Glass	240 (0,2l)	20x12
7	120145	Champagne Glass (shrink-wrapped pack)	135 (0,1l)	10x10
8	107002	Champagne Glass (display box)	135 (0,1l)	10x10
9	119102	Château Liqueur Glass	50 (0,02/0,04l)	75x12
10	192490	Château Wine Glass	140 (0,1l)	60x12
11	149147	Diamond Juice Glass	250 (0,2l)	35x30
12	119499	Bavaria Beer Glass	275 (0,2)	35x30
13	127732	Bavaria Beer Glass	450 (0,3l)	28x22
14	185162	Longdrink Glass	300 (0,02/0,04/0,3l)	10x50





GLASSES

Material: PS max +100°C
PP max +120°C

No.	Article	Description	Material	Volume (ml)	Qty/ Cart.
1	141242	Shotglass	PS	30	25x50
2	111251	Crystallo Liqueur Glass	PS	50 (0,04l)	60x20
3	127730	Crystallo Coupe Glass	PS	65	85x40
4	127731	Lid for 127730	PS	-	1x3400
5	127726	Crystallo Juice Glass	PS	200 (0,15l)	45x30
6	111258	Crystallo Juice Glass	PS	240 (0,2l)	41x30
7	127724	Crystallo Coupe Glass	PS	260 (0,2l)	24x20
8	111255	Flat Lid for 127724	PS	-	20x100
9	118890	Dome Lid for 127724	PS	-	25x20
10	507200	Tourmaline Shot Glass	PS	100 (0,07l)	20x50
11	149149	Tourmaline Juice Glass	PS	240 (0,2l)	25x40
12	149150	Tourmaline Juice Glass	PS	310 (0,25l)	15x40
13	127727	Juice Glass	PS	225 (0,15l)	20x40
14	119484	Drinkspout for 127727	PS	-	2x500
15	127729	Juice Glass	PS	265	45x30



1

2



3

4



5

6



7

8

9



10

11

12

13

14

15



CLEAN AND HYGIENIC

Single wrapped glasses are ideal for areas with high hygiene requirements like bathrooms. Discover our full coaster assortment by downloading our Table Top catalogue.

BASIC HYGIENE PACKED GLASSES

Material: PS max +100°C
PP max +90°C

No.	Article	Description	Material	Volume (ml)	Qty/ Cart.
1	149148	Tourmaline Juice Glass (hygiene packed)	PS	240 (0,2l)	1050x1
2	172697	Hygiene packed glass	PP	240	1400x1



1

2

FESTIVAL GLASSES

• Flexible material to avoid breakage

Material: PP max +100°C



No.	Article	Description	Volume (ml)	Qty/ Cart.
1	154744	Beer Glass	400 (0,3l)	20x50
2	154745	Beer Glass	500 (0,4l)	20x40
3	154743	Beer Glass	630 (0,4/0,5l)	14x50



1

2

3

A CUP OF ART, PLEASE!

NEW



Introducing BioPak Art Series.
Change is in your hands!

BioPak
It doesn't cost the earth



#biocupartseries

Art Series are probably the most fashionable cups, telling sustainable stories with art on-the-go. The concept features environmentally themed artwork from European, Australian and New Zealand artists released every 8 weeks. Every box contains a mix of 3 beautiful, creative designs, helping create attention for your business on social media. Made of paper sourced from managed plantations, and with Ingeo™ lining, a plant-based bioplastic, our Art Series Cups are industrial compostable and designed with the circular economy in mind. Art Series Cups biodegrade in an industrial composting facility without creating any toxic residues.

BIOCUP ART SERIES COMPOSTABLE SINGLE WALL CUPS

- New artworks every eight weeks
- Made from plants, designed with the circular economy in mind
- Cups will create nutrient rich compost in industrial composting

Material: PAP/PLA max +100°C
CPLA max +100°C



No.	Article	Description	Colour	Material	Volume (ml)	Qty./Cart.
1	191949	BioCup Art Series	Printed	PAP/PLA	120	40x50
2	191951	BioCup Art Series	Printed	PAP/PLA	240	20X50
3	191952	BioCup Art Series	Printed	PAP/PLA	350	20X50
4	170636	Lid for 191951	White	CPLA	-	20x40
5	170637	Lid for 191952	White	CPLA	-	16x50



1 New



2 New



3 New



4



5



SWEET CUP

- Meet demand for eco-conscious to-go coffee cups
- Designed around Duni's ecoecho® 'waste not, want not' philosophy
- 350 ml & 470 ml cups can be hygienically sealed with the DF5 machine
- Messaging on cup sends attractive eco-message to customers
- Suitable for profile print
- RPET Sip Lid made from up to 100% recycled plastic

Material: BAGASSE/PLA up to +100°C
 CPLA max +100°C
 PLA max +40°C

ecoecho®



NEW

No.	Article	Description	OK Compost	Colour	Material	Volume (ml)	Qty./Cart.
1	182530	Sweet Cup ecoecho®	*	Printed	Bagasse	120	24x50
2	182531	Sweet Cup ecoecho®	*	Printed	Bagasse	180	16x50
3	182532	Sweet Cup ecoecho®	*	Printed	Bagasse	240	16x50
4	182533*	Sweet Cup ecoecho®	*	Printed	Bagasse	350	18x50
5	182534*	Sweet Cup ecoecho®	*	Printed	Bagasse	470	25x36
6	182535	Lid for 182531/182532		White	CPLA	-	16x50
7	182536	Lid for 182533/182534		White	CPLA	-	12x75
8	191668	Flat Lid with cross for 182533/182534		Transparent	PLA	-	12x75
9	191669	Dome Lid with hole for 182533/182534		Transparent	PLA	-	12x75
10	192160**	Sip Lid for 182533/182534		Transparent	RPET	-	10x100

* Sealable with the DF5 machine. Order insert with article no. 191377.

** Available from February 2020.



1

2

3

4

5

6

7

8 New

9 New

10 New



URBAN COFFEE CUPS

- Ideal for cafés, juice bars, gyms etc
- Compostable cups and lids
- Choice of different sizes
- First ever black ecoecho® lids

Material: PAP/PLA max +100°C
CPLA max +100°C

ecoecho®



No.	Article	Description	Colour	Material	Volume (ml)	Qty/ Cart.
1	182572	Urban Coffee Cup ecoecho®	Printed	PAP/PLA	80	20x50
2	182573	Urban Coffee Cup ecoecho®	Printed	PAP/PLA	120	20x50
3	182574	Urban Coffee Cup ecoecho®	Printed	PAP/PLA	180	20x40
4	182575	Urban Coffee Cup ecoecho®	Printed	PAP/PLA	240	20x40
5	182576	Urban Coffee Cup ecoecho®	Printed	PAP/PLA	350	16x50
6	182581	Lid for 182574/182575	White	CPLA	-	20x40
7	182582	Lid for 182576/182577	White	CPLA	-	16x50
8	182570	Lid for 182574/182575	Black	CPLA	-	20x40
9	182571	Lid for 182576/182577	Black	CPLA	-	16x50





ECO TRIPLE WALL CUPS

- Compostable cups and lids
- Sturdy triple wall design
- Vented lids for steam release

Material: PAP/PBS max +100°C
CPLA max +100°C

ecoecho®



No.	Article	Description	Colour	Material	Volume (ml)	Qty/ Cart.
1	161197	Triple Wall Cup	Brown	PAP/PBS	240	20x25
2	161198	Triple Wall Cup	Brown	PAP/PBS	350	12x30
3	161199	Triple Wall Cup	Brown	PAP/PBS	470	12x20
4	159709	Triple Wall Cup	Printed	PAP/PBS	240	20x25
5	159710	Triple Wall Cup	Printed	PAP/PBS	350	12x30
6	159711	Triple Wall Cup	Printed	PAP/PBS	470	12x20
7	182535	Lid for 159709/161197	White	CPLA	-	16x50
8	182536	Lid for 159710/159711/ 161198/161199	White	CPLA	-	12x75



ECO DOUBLE WALL CUPS

- Made out of 100% renewable resources
- Compostable cups and lids
- Sturdy double wall design
- Vented lids for steam release

Material: PAP/PLA max +100°C
CPLA max +100°C

ecoecho®



No.	Article	Description	Colour	Material	Volume (ml)	Qty/ Cart.
1	170701	Double Wall Cup	Printed	PAP/PLA	240	20x40
2	170730	Double Wall Cup	Printed	PAP/PLA	350	16x35
3	170731	Double Wall Cup	Printed	PAP/PLA	470	16x35
4	170636	Lid for 170701	White	CPLA	-	20x40
5	170637	Lid for 170730/170731	White	CPLA	-	16x50



ECO HOT DRINK CUPS

- Compostable cups and lids
- Vented lids for steam release

Material: PAP/PBS max +100°C
CPLA max +100°C

ecoecho®



No.	Article	Description	Colour	Material	Volume (ml)	Qty/ Cart.
1	159924	Eco Hot Drink Cup	Printed	PAB/PBS	120	20x50
2	159706	Eco Hot Drink Cup	Printed	PAB/PBS	240	20x50
3	159707	Eco Hot Drink Cup	Printed	PAB/PBS	350	16x50
4	159708	Eco Hot Drink Cup	Printed	PAB/PBS	470	16x35
5	182535	Lid for 159706	White	CPLA	-	20x50
6	182536	Lid for 159707/159708	White	CPLA	-	25x50



ECO THANK YOU CUPS

- Made out of 100% renewable resources
- Compostable cups and lids
- Vented lids for steam release

Material: PAP/PLA max +100°C
CPLA max +100°C

ecoecho®



No.	Article	Description	Colour	Material	Volume (ml)	Qty/Cart.
1	170633	Thank You Cup	Printed	PAP/PLA	120	36x45
2	182847	Thank You Cup	Printed	PAP/PLA	180	20x40
3	170634	Thank You Cup	Printed	PAP/PLA	240	20x40
4	170635	Thank You Cup	Printed	PAP/PLA	350	16x50
5	176384	Thank You Cup	Printed	PAP/PLA	470	16x50
6	186210	White Cup	White	PAP/PLA	120	36x45
7	186212	White Cup	White	PAP/PLA	240	20x40
8	186213	White Cup	White	PAP/PLA	350	16x50
9	170636	Lid for 182847/170634	White	CPLA	-	20x40
10	170637	Lid for 170635 / 176384	White	CPLA	-	16x50



CIRCUIT COFFEE-TO-GO CUPS

- Cost-effective solution for design lovers
- Sizes for every need with matching PS lids
- PE lamination
- Reclosable flip plug prevents leaks

Material: PAP/PE max +100°C
PS max +100°C



No	Article	Description	Colour	Material	Volume (ml)	Qty/ Cart.
1	181835	Circuit cup	Printed	PAP/PE	120	36x45
2	181855	Circuit cup	Printed	PAP/PE	180	20x50
3	181836	Circuit cup	Printed	PAP/PE	240	20x40
4	181837	Circuit cup	Printed	PAP/PE	350	16x50
5	163600	Lid for 181835	Transparent	PS	-	10x100
6	181833	Lid for 181855/181836	Black	PS	-	20x40
7	169925	Lid for 181837	Black	PS	-	10x100
8	169923	Lid for 181837	White	PS	-	10x100



CAFÉ IZZA CUPS

- Matching FSC®-certified napkins available
- Vented lids for steam release

Material: PAP/PE max +100°C
 PS max +100°C
 Tissue



No.	Article	Description	Colour	Material	Volume (ml)	Qty/ Cart.
1	168304	Izza Napkin, 3-ply, 24 x 24 cm	Printed	Tissue	-	8x250
2	168520	Dispenser Napkin, 1-ply, 33 x 33 cm	Printed	Tissue	-	6x750
3	179337	Dispenser Napkin, 1-ply, 33 x 32 cm	Brown	Tissue	-	6x750
4	170740	Café Izza Black Cup	Printed	PAP/PE	120	36x45
5	170741	Café Izza Black Cup	Printed	PAP/PE	240	20x40
6	170750	Café Izza Black Cup	Printed	PAP/PE	350	16x50
7	171427	Lid for 170741	Black	PS	-	20x40
8	171428	Lid for 170750	Black	PS	-	16x50
9	168867	Napkin Dispenser	Matt Black	Metal	-	



COFFEE QUICK CUPS

- Vented lids for steam release

Material: PAP/PE max +100°C
 PS max +100°C



No.	Article	Description	Colour	Material	Volume (ml)	Qty/ Cart.
1	163516	Coffee Quick Cup with Handle	Printed	PAP/PE	80	20x50
2	159920	Coffee Quick Cup	Printed	PAP/PE	120	16x80
3	163517	Coffee Quick Cup	Printed	PAP/PE	200	20x80
4	159921	Coffee Quick Cup	Printed	PAP/PE	240	20x50
5	159922	Coffee Quick Cup	Printed	PAP/PE	350	16x50
6	159923	Coffee Quick Cup	Printed	PAP/PE	470	16x35
7	163600	Lid for 159920	Transparent	PS	-	10x100
8	163601	Lid for 163517	Transparent	PS	-	20x100
9	169922	Lid for 159921	White	PS	-	10x100
10	169923	Lid for 159922/159923	White	PS	-	10x100
11	169924	Lid for 159921	Black	PS	-	10x100
12	169925	Lid for 159922/159923	Black	PS	-	10x100





HOT DRINK CUPS

Material: PAP/PE max +100°C
PS max +100°C

No.	Article	Description	Colour	Material	Volume (ml)	Qty/ Cart.
1	153760	Café Stripe Cup	Printed	PAP/PE	200	30x75
2	153759	Café Flower Cup with Handle	Printed	PAP/PE	200	20x80
3	778206	Paper Cup with Handle	White	PAP/PE	200	20x80
4	100514	Paper Cup	White	PAP/PE	200	30x75
5	163601	Lid for 153759/778206	Transparent	PS	-	20x100



NAPKIN DISPENSER BAMBOO



No.	Article	Description	Pack
1	186982	Napkin Dispenser, Bamboo, 11 x 11 cm	4x1
2	192749	Napkin Dispenser, Bamboo, 11 x 11 cm	4x1
3	186983	Napkin Dispenser, Bamboo, 13 x 13 cm	4x1
4	192750	Napkin Dispenser, Bamboo, 13 x 13 cm	4x1



DUNISOFT® DISPENSER, 20 X 20 CM

No.	Article	Description	Pack			
1	186558	Organic	16x180	•	•	•
2	192129	Veggies, Eco Brown Napkin	16x180	•	•	•
3	183317	Brown, Eco Brown Napkin	24x50	•	•	•
4	187086	Grey, White Napkin	24x50	•	•	•
5	187085	Black, White Napkin	24x50	•	•	•



PLASTIC COFFEE CUPS

Material: PS max +70°C



1

2



3

4

5

No.	Article	Description	Colour	Volume (ml)	Qty/ Cart.
1	185161	Coffee Cup with Handle	White	250	25x40
2	119503	Coffee Cup with Handle	White	370	24x20
3	153779	Coffee Cup with Handle	White/Brown	180	16x50
4	153778	Coffee Cup with Handle	White/Brown	210	16x50
5	153780	Coffee Cup with Handle	White	210	16x50

COFFEE CUPS & CUP HOLDERS

Material: PS max +70°C



1

2

No.	Article	Description	Colour	Material	Volume (ml)	Qty/ Cart.
1	100191	Coffee Cup Combi	White	PS	210	25x80
2	91892	Holder for Coffee Cup Combi	Blue	PP	-	15x10



1 New

2 New

VENDING PAPER CUPS

Material: PAP/PLA max +100°C (articles 193168, 192169)
PAP/PE max +100°C (article 187547)

No.	Article	Description	Colour	Volume (ml)	Qty/ Cart.
1	192168	Cup	Brown	120	20x50
2	192169	Cup	Brown	210	20x50
3	187547	Cup	White	210	20x50



3

VENDING PLASTIC CUPS

Material: PS max +70°C

No.	Article	Description	Colour	Volume (ml)	Qty/ Cart.
1	103538	Wall Dispenser One-O-Matic for 401300	White/Transparent	-	6x1
2	103539	Wall Dispenser One-O-Matic for Cups 21cl	White/Transparent	-	6x1
3	127740	Cup	White/Brown	210	20x100
4	402900	Economy Cup	White	210	20x100
5	402500	Cup	White	210	20x100
6	402600	Cup	White	210	20x100
7	401300	Cup	White	120	50x80



1

2



3

4

5

6

7





TAKE-AWAY BAGS

Material: Paper



No.	Article	Description	Material	Colour	Size (mm)	Volume (l)	Qty/ Cart.
1	174730	Take-away Bag without handles	Paper	Brown	180x110x265	5	1x500
2	169875	Take-away Bag	Paper	Brown	350x170x245	15	1x200
3	169876	Take-away Bag	Paper	White	350x170x245	15	1x200

GLASS & CUP HOLDERS

Material: Fibre



No.	Article	Description	Colour	Qty/ Cart.
1	169881	Cup Holder, 2 Glasses/Cups	Brown	2x200
2	169882	Cup Holder, 4 Glasses/Cups	Brown	4x75

PAPER CUP SLEEVES

Material: Cardboard



No.	Article	Description	Colour	Qty/ Cart.
1	180317	Sleeve for paper cups 24 cl	Brown	40x25
2	180315	Sleeve for paper cups 35/47 cl	Brown	40x25

STIRRERS

- Practical
- Hygienic

Material: PS max +100°C
Wood max +100°C



No.	Article	Description	Colour	Material	Size LxWxH (mm)	Qty/Cart.
1	191720	Hygiene packed wooden stirrers	Beige	Wood	110	50x100
2	191721	Dispenser box with wooden stirrers	Beige	Wood	110	6x2000
3	176975	Bulk packed wooden stirrers	Beige	Wood	140	5x2000
4	153522	Dispenser box with stirrers	White	PS	110	6x2000



CONDIMENTS



No.	Article	Description	Size (mm)	Qty/ Cart.
1	121998	Salt/Pepper Cruet set 0,3/3g	50x30x50	1x220
2	163515	Salt/Pepper twinpack 1&0,2g	70x40	1x5000



1



2

ACCESSORIES



No.	Article	Description	Size (mm)	Qty/ Cart.
1	353830	Dental Stick	50	6x1000
2	778092	Dental Stick	50	3x3000
3	119193	Refreshing Towel Lemon Scented	70x50	1x1000
4	119194	Refreshing Towel	70x50	1x1000
5	142981	Dispenser Box with Refreshing Towels Lemon Scented	70x50	6x250
6	163512	Desinfecting Towel	70x50	1x3000
7	186992	Wet Towel Compostable	60x130	2x250
8	186993	Wet Towel Compostable	50x70	1x1000
9	187004	Cardboard Dispenser, Spunlace	50x70	4x250



1



2



3



4



5



6



7



8



9

SERVING PLATTERS WITH LIDS

- Excellent display of the food on the buffet
- Clear, tight lids perfect for transportation
- Made of recycled PET-material

Material: RPET max +70°C
APET max +70°C

ecoecho®



No.	Article	Description	Colour	Material	Size (mm) LxWxH	Qty/ Cart.
1	151894	Serving Platter, Oval	Silver	APET	450x285	13x2
2	151895	Serving Platter, Octagonal	Silver	APET	Ø310	10x2
3	159795	Serving Platter, Octagonal	Black	RPET	360x240x30	1x50
4	159799	Lid for 159795	Transparent	RPET	360x240x50	1x50
5	159796	Serving Platter, Octagonal	Black	RPET	460x300x30	1x50
6	159800	Lid for 159796	Transparent	RPET	460x300x60	1x50
7	159797	Serving Platter, Rectangular	Black	RPET	460x300x30	1x50
8	159801	Lid for 159797	Transparent	RPET	460x300x60	1x50



1



2



3



4



5



6



7



8



1



2

1/1 GN TRAY

Material: PP max +120°C (microwarmable)
APET max +70°C



No.	Article	Description	Material	Colour	ml	Size (mm) LxWxH	Qty/ Cart.
1	166027	1/1 GN Tray	PP	Black	8175	530x325x60	1x48
2	166026	Lid for 166027	APET	Transparent	-	530x325x30	1x32

SERVING PLATTERS OVAL

Material: ALU max +250°C



No.	Article	Description	Colour	Size (mm) LxWxH	Qty/ Cart.
1	150402	Serving Platter, Oval	Silver	550x360x30	8x5



1



1-4



5-6



7

8

COFFEE FILTERS

Material: Paper

No.	Article	Description	Colour	Model	Type	Diameter Base (mm)	Diameter Flat (mm)	Qty/ Cart.
1	506507	Brewmatic Bowl Coffee Filter, 10 l	White	457/203	Bowl	Ø 203	457	1x500
2	506509	Brewmatic Bowl Coffee Filter, 24 l	White	550/203	Bowl	Ø 203	550	1x500
3	506501	Brewmatic Bowl Coffee Filter, 1,8 l	White	90/250	Bowl	Ø 90	250	4x250
4	506502	Brewmatic Bowl Coffee Filter, 1,8 l	White	110/250	Bowl	Ø 110	250	4x250
5	506511	Brewmatic Bowl Coffee Filter, 1,8 l	Brown	90/250	Bowl	Ø 90	250	4x250
6	506512	Brewmatic Bowl Coffee Filter, 1,8 l	Brown	110/250	Bowl	Ø 110	250	4x250
7	185516	Bag Coffee Filter, 1 l	White	No4	Bag	190x150	100	12x200
8	185517	Bag Coffee Filter, 1 l	Brown	No4	Bag	190x150	100	12x200

COOKING BAGS

- Suitable for sous-vide cooking

Material: PE max +120°C

No.	Article	Description	Colour	Size (mm) LxWxH	Qty/ Cart.
1	162016	Cooking Bag, 1,5l	Transparent	200x300	1x1000
2	162017	Cooking Bag, 2,5l	Transparent	250x350	1x1000
3	162018	Cooking Bag, 6,0l	Transparent	320x450	1x500
4	162019	Cooking Bag, 10,5l	Transparent	350x550	1x500



1

2



3

4



PLASTIC, ALUMINIUM FOIL AND DISPENSERS

Material: ALU max +250°C
 PE max +100°C
 PVC max +100°C

No.	Article	Description	Material	Size WxL	Qty/ Cart.
1	716000	Pre-perforated Clingfilm (1600pcs)	PVC	30 cm x 480 m	6x1
2	716100	Pre-perforated Clingfilm (1100pcs)	PVC	40 cm x 440 m	6x1
3	716500	Clingfilm in Dispenser Box with Cutter	PVC	30 cm x 300 m	6x1
4	716600	Clingfilm in Dispenser Box with Cutter	PVC	45 cm x 300 m	6x1
5	716610	Refill Clingfilm to Dispenser Box with Cutter	PVC	45 cm x 300 m	3x1
6	716620	Clingfilm in Dispenser Box with Cutter	PE	45 cm x 300 m	6x1
7	717103	Dispenser for Clingfilm & Foil	Steel	45 cm	1x1
8	719200	Foil in Dispenser with Cutter	ALU	30 cm x 150 m	6x1
9	719400	Foil in Dispenser with Cutter	ALU	45 cm x 150 m	6x1
10	719210	Refill Foil to Dispenser Box with Cutter	ALU	30 cm x 150 m	3x1
11	719410	Refill Foil to Dispenser Box with Cutter	ALU	45 cm x 150 m	3x1





SMARTER IN-HOUSE PACKAGING

Good food deserves good packaging. With this in mind, we developed our unique 'one-stop-shop' Duniform® concept. This combines sealing machines, trays, sealing films, transport solutions and service and support.

You simply choose the solution that's best for your business at any given time.



DUNIFORM®

DUNIFORM®

Even better, unlike off-the-shelf alternatives, Duniform® products are designed to work together. This means optimal convenience for you – and a great experience for your guests. Keep an eye out for exciting new packaging concepts in our Duniform® range.

PROFESSIONAL IN-HOUSE PACKAGING MADE EASY



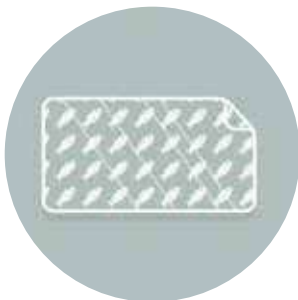
Win over eco-conscious customers by using packaging that cares for the environment.



Get a top-quality sealing machine that suits your needs, whether you are a local deli or an industrial-scale HMR company.



Select a tray for frozen, chilled or warm food from a wide choice of formats and top-quality materials.



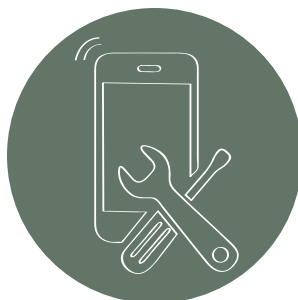
Customise your films to stand out and turn your packaging into a promotional tool.



Show your food at its best and ensure a leak-free, secure fit with crystal-clear films.



Extend the shelf-life of your food, make planning easier and minimise wasted ingredients.



Receive dedicated local support for the lifetime of your solution, covering technical service, expert guidance and even training.



Ensure your food arrives in tip-top condition and simplify delivery with thermo-bags and boxes, temperature control equipment and trolleys.

The Duniform® one-stop-shop concept has set the standard for simple, smart in-house packaging. Over time, it has helped to drive success for many leading hotels, restaurants, MSR companies, caterers, and retailers.

Unlike off-the-shelf solutions

Different to many alternatives, all Duniform® products are designed to work together. That means you get optimal convenience and your customers get a consistently great experience. What's more there are no complicated ordering hassles.

Tailored to your business needs

Another big advantage of the Duniform concept is the way it matches – and grows with – your business. With such a wide choice of machines, materials and trays available you can always get exactly the right solution for your needs.

Eco-conscious materials

The Duniform® concept includes many innovative, eco-conscious materials, such as bioplastic. These not only offer top-level performance and practicality; they also send an attractive message about your business to your customers.

A flexible finishing touch

The sealing films for Duniform® can be customised for an added personal touch. Now we even offer profile printed stickers & sleeves that enable you to promote your brand on-the-go.



A WORD FROM OUR CLIENTS



"The design is important to me and my customers. So are sustainable materials and the smart filling functionality."

Mathias Pilblad,
Meatballs for the People



"Duniform® trays have a quality look and feel. Our guests definitely appreciate them."

Manh Phan Hien,
owner of Zen Thai



"Duniform® bioplastic trays are a very good choice for us. They allow us to increase the number of sustainable products we use."

Magnus Lingvärn,
Head chef at the Mathildenborg kitchen

FORUM CARDBOARD/PE TRAYS

- 85% less plastic
- Made in Europe
- Easy recycling
- Sustainable look on display
- Figure cutting and MAP available on larger machines

Material: Cardboard/PE $\pm 0^{\circ}\text{C}$ to $+100^{\circ}\text{C}$, hot fill & microwarmable.
Temp (Time): MW <15min, chilled <3 days



No	Article	Description	Colour	Cassette DF10/20	Size LxWxH (mm)	Vol (ml)	Qty/Cart.
1	192166	Cardboard Tray	Printed	192162 DF10/20	165x178x45	918	1x250
2	192167	Cardboard Tray	Printed	192162 DF10/20	165x178x59	1114	1x330



1 New

2 New

CARDBOARD/PE TRAYS

- Made from a renewable resource
- FSC[®]-certified cardboard
- Clear window to display food

Material: Cardboard/PE $\pm 0^{\circ}\text{C}$ to $+100^{\circ}\text{C}$, hot fill & microwarmable.
Temp (Time): MW <15min, chilled <3 days



No	Article	Description	Colour	Cassette DF10/20	Size LxWxH (mm)	Vol (ml)	Qty/Cart.
1	162678	Sandwich Tray	Brown	160054 DF10 (2 cav.)	170x75x90	570	1x500
2	162679	Cardboard Tray	Brown	160053	115x115x50	550	1x250
3	162680	Cardboard Tray	Brown	160051	200x120x45	900	1x250
4	162681	Cardboard Tray	Brown	160050	165x165x45	1000	1x250
5	162682	Cardboard Tray	Brown	161267	195x165x45	1200	1x250



1

2

3

4

5

CARDBOARD/PET MENU TRAYS

- High temperature resistance
- Combine with PET or universal sealing film

Material: Cardboard/PET -20°C to $+220^{\circ}\text{C}$
Temp (Time): $+220^{\circ}\text{C}$ (1h), $+70^{\circ}\text{C}$ (2h), -20°C (unlimited)



No.	Article	Description	Colour	Cassette DF10/20	Size LxWxH (mm)	Vol (ml)	Qty/Cart.
1	173081	Cardboard Tray	White	140162*	227x177x40	1000	1x300
2	173082	Cardboard Tray	White	140163	186x136x35	550	1x560
3	173083	Cardboard Tray	White	140163	186x136x45	720	1x520

*No. 1 DF 15/DF25 cassette, 153432 (2 cav.) also available



1

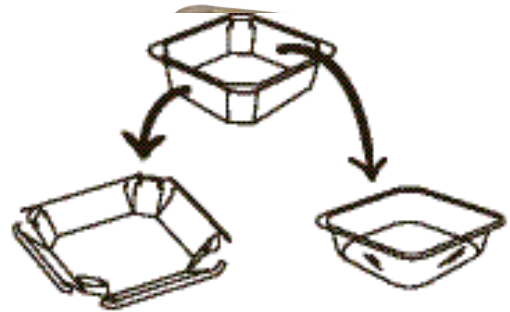
2

3

NEW



RECYCLING MADE EASY WITH FORUM TRAYS



Made of FSC® certified paperboard

Made of plastic

DUNIFORM® TRAYS





POLARDELI MINIMALIST DESIGN MAXIMUM PERFORMANCE

Polardeli boxes bring a fresh perspective to mindful packaging design. Ideal for delis, they protect chilled food while their transparent, recycled PET material makes it look delicious. Even better, they offer top-tier functionality and work with Duniform® sealing machines and lids.

 WATCH THE MOVIE

Check out the Polardeli movie at Duni.com/Polardeli



POLARDELI

- Made from recycled PET
- Tamper-proof closing with Duniform® sealing
- Prolonged shelf life
- Matching stackable lids
- Up to 100% RPET



Material: RPET -40 °C to +70 °C

ecoecho®



No	Article	Description	Cassette	Sealing film	Size LxWxH	Vol	Qty/Cart.
1	187030	Polardeli Mini	187027 DF10/20 (4 cavities) 187037 DF15/25 (6 cavities)	162800	102x80x24mm	100 ml	1x720
2	187031	Polardeli Petit	187028 DF10/20 (1 cavities) 187036 DF15/25 (2 cavities)	162800	175x115x29mm	300 ml	1x780
3	187032	Polardeli Medio	187028 DF10/20 (1 cavities) 187036 DF15/25 (2 cavities)	162800	175x115x48mm	500 ml	1x576
4	187033	Polardeli Grand	187028 DF10/20 (1 cavities) 187036 DF15/25 (2 cavities)	162800	175x115x69mm	750 ml	1x450
5	187034	Polardeli Lid Mini	-	-	108x86x18mm	-	1x630
6	187035	Polardeli Lid	-	-	181x121x18mm	-	1x625





MINDFUL MODERN PACKAGING

You can present your entire offering as sustainable with elegant bioplastic trays – without ever having to compromise on functionality, flexibility and style. They offer performance of PP – yet are fully recyclable.



RPET SANDWICH TRAYS

- Fully seal sandwiches to extend shelf life
- Made from crystal clear, eco-conscious RPET
- Maximise hygiene and appeal of food
- Map applicable with more sophisticated duniform® machines

Material: RPET max +70°C



No.	Article	Description	Comp	Colour	Material	Cassette	Size(mm) LxWxH	Vol (ml)	Qty/ Cart.
1	185894	Sandwich Tray	1	Transparent	RPET	186164 DF10 (2 cav.), 186163 DF15/25 (3 cav.)	181x96x85	570	1x1200
2	185895	Sandwich Tray	1	Transparent	RPET	186166 DF10 (2 cav.), 186165 DF15/25 (3 cav.)	181x84x85	500	1x1400



1 New



2 New

BIOPLASTIC CATER LINE TRAYS

- Made from a renewable resource
- Recyclable
- MAP applicable

Material: Bioplastic -20°C to +120°C.

Temp (Time): +120°C <60min, +100°C <120min, +70°C <240min, +40°C <10days

ecoecho®



No	Article	Description	Comp	Colour	Cassette DF10/20*	Size LxWxH (mm)	Volume (ml)	Qty/Cart.
1	175298	Cater Line Tray	1	White	140162	227x178x32	920	1x216
2	175299	Cater Line Tray	1	White	140162	227x178x40	1115	1x216
3	173718	Cater Line Tray	1	White	140162	227x178x50	1345	1x216
4	173719	Cater Line Tray	2	White	159176	227x178x50	645/540	1x216
5	173720	Cater Line Tray	3	White	159177	227x178x50	530/325/235	1x216

*No. 1,-3 DF15/25 cassette, 153432 (2 cav.) also available

No. 4 DF15/25 cassette, 163449 (2 cav.) also available

No. 5 DF15/25 cassette, 163450 (2 cav.) also available



BIOPLASTIC TAKE-AWAY TRAYS

- Made from a renewable resource
- Recyclable
- MAP applicable

Material: Bioplastic -20°C to +120°C

Temp (Time): +120°C (1 h), +70°C(4h), +40°C (10 days), -20°C (unlimited)

ecoecho®



No	Article	Description	Comp	Colour	Cassette DF10/20*	Size LxWxH (mm)	Vol (ml)	Qty/Cart.
1	171149	Take-Away Tray	1	White	150020	250x159x43	1100	1x246
2	171150	Take-Away Tray	2	White	150021	250x159x45	700/400	1x246
3	171151	Take-Away Tray	3	White	150022	250x159x48	550/350/200	1x246

*No. 1 DF15 / DF25 cassette, 165911 (2 cav.) also available.

No. 2 DF15 / DF25 cassette, 182975 (2 cav.) also available.

No. 3 DF15 / DF25 cassette, 173050 (2 cav.) also available.



CPET MENU TRAYS

- Contain 60% recycled material



Material: CPET -40°C to +220°C.
Temp (Time): +220°C <30min, +200°C <60min, +70°C <120min, +40°C 10days

ecoecho®



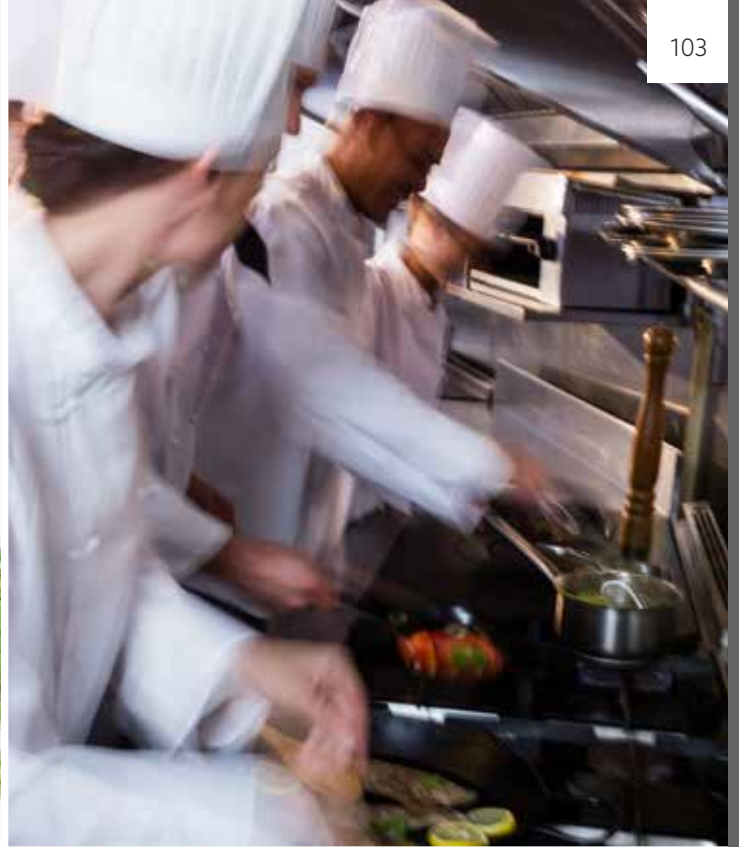
No	Article	Description	Comp	Colour	Cassette	Size LxWxH (mm)	Volume (ml)	Qty/ Cart.
1	115495	Menu Tray, ecoecho®	1	Black	140162 DF10/20, 153432 DF15/25 (2 cav.)	225x175x34	960	1x300
2	115494	Menu Tray, ecoecho®	1	White	140162 DF10/20, 153432 DF15/25 (2 cav.)	225x175x34	960	1x300
3	122018	Menu Tray, ecoecho®	1	Black	140162 DF10/20, 153432 DF15/25 (2 cav.)	225x175x43	1200	1x300
4	115503	Menu Tray, ecoecho®	1	White	140162 DF10/20, 153432 DF15/25 (2 cav.)	225x175x43	1200	1x300
5	153414	Menu Tray, ecoecho®	1	Black	140162 DF10/20, 153432 DF15/25 (2 cav.)	225x175x54	1500	1x270
6	153422	Menu Tray, ecoecho®	1	White	140162 DF10/20, 153432 DF15/25 (2 cav.)	225x175x54	1500	1x270
7	151305	Menu Tray, ecoecho®	2	Black	140160 DF10/20, 153433 DF15/25 (2 cav.)	225x175x35	515/370	1x250
8	151306	Menu Tray, ecoecho®	2	White	140160 DF10/20, 153433 DF15/25 (2 cav.)	225x175x35	515/370	1x250
9	115505	Menu Tray, ecoecho®	2	Black	140160 DF10/20, 153433 DF15/25 (2 cav.)	225x175x43	655/455	1x300
10	115504	Menu Tray, ecoecho®	2	White	140160 DF10/20, 153433 DF15/25 (2 cav.)	225x175x43	655/455	1x300
11	151307	Menu Tray, ecoecho®	3	Black	140158 DF10/20, 152440 DF15/25 (2 cav.)	225x175x34	430/225/165	1x250
12	151728	Menu Tray, ecoecho®	3	White	140158 DF10/20, 152440 DF15/25 (2 cav.)	225x175x34	430/225/165	1x250
13	115506	Menu Tray, ecoecho®	3	Black	140158 DF10/20, 152440 DF15/25 (2 cav.)	225x175x43	525/275/205	1x300
14	132346	Menu Tray, ecoecho®	3	White	140158 DF10/20, 152440 DF15/25 (2 cav.)	225x175x43	525/275/205	1x300
15	147599	Menu Tray	3	Black	147600 DF10/20	225x175x43	220/220/560	1x300



PP LIDS FOR 1-COMP MENU TRAYS

Material: PP -20°C to +100°C.
Temp (Time): +100°C <120min, +70°C <120min, +40°C <10days

No	Article	Description	Colour	Size LxWxH (mm)	Qty/ Cart.
1	159110	Lid for 1-comp CPET Menu Trays	Transparent	225x175x10	1x300
2	175803	Lid for CPET Menu Trays	Transparent	225x180x13	1x200



CPET SMALL PORTION TRAYS

- 60% recycled material in ecoecho® articles

Material: CPET -40°C to +220°C

Temp (Time): +220°C (2h), +70°C (2h), +40°C (10days), -40°C (unlimited)

ecoecho®



No.	Article	Description	Colour	Cassette DF10/20	Size LxWxH (mm)	Vol (ml)	Qty/Cart.
1	157356	Small Portion Tray	Black	182540 (2 cav.)	160x103x35	370	1x750
2	115483	Small Portion Tray, ecoecho®	Black	140249 (2 cav.)	171x127x35	510	1x900
3	115482	Small Portion Tray, ecoecho®	White	140249 (2 cav.)	171x127x35	510	1x900
4	148217	Small Portion Tray, ecoecho®	Black	140249 (2 cav.)	171x127x50	670	1x840
5	151221	Small Portion Tray, ecoecho®	White	140249 (2 cav.)	171x127x50	670	1x840
6	151304	Small Portion Tray, ecoecho®	Black	140163 D	187x137x34	600	1x520
7	151375	Small Portion Tray, ecoecho®	Black	140163	187x137x40	700	1x480
8	159111	PP Lid for 151304/151375	Transparent	-	190x138x14	-	1x480
9	115491	Small Portion Tray	White	140164*	188x119x54	760	1x480

*No. 8 DF10/20 cassette, 140169 (2 cav.), also available

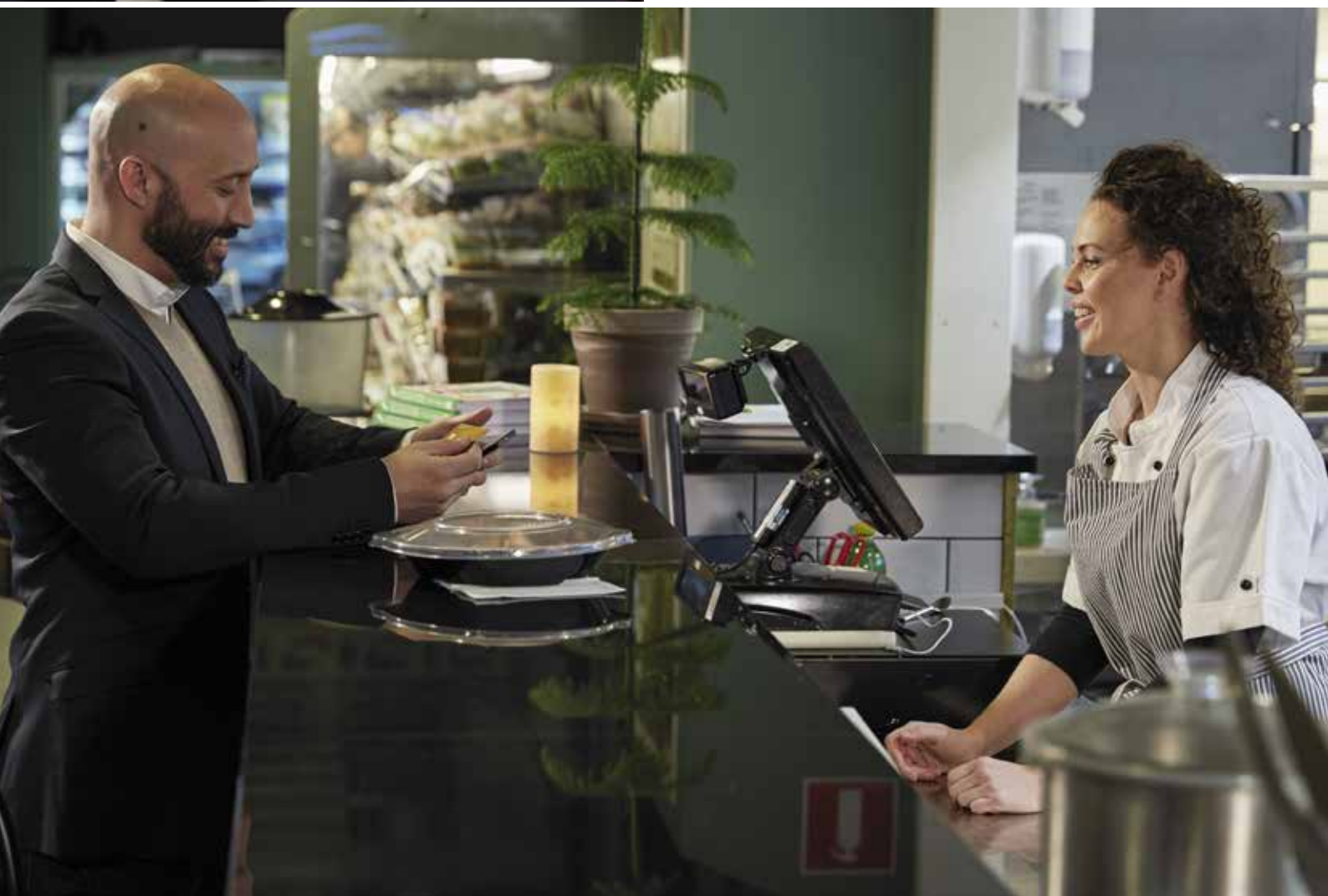




SERVED TO RAISE A SMILE

The best ideas are usually simple. Inspired by Asian bowls, the idea behind Duniform® Pearl containers is just that: unlike 'regular' trays, they come in an eye-catching deep plate shape. This ensures they stand out on the shelf and provide a winning dining experience.

As a result, they are ideal for encouraging impulse purchases and impressing customers. Available in a choice of formats that match natural eating behaviour, they come with transparent lids and also fit Duniform® machines, if you want a sealed solution.



PP/MINERAL DUNIFORM® PEARL

- Fits Duniform® machines DF15/25, DF32F to DF44*
- Choice of lids or sealing films
- Personalisable sealing films
- Precise cut around edge when sealed

Material: PP/MIN -20°C to +120°C

Temp (Time): +120°C (1h), +70°C (4h), +40°C (10 days), -20°C (unlimited)



No.	Article	Description	Comp	Colour	Cassette DF15/25	Size ØxH (mm)	Vol (ml)	Qty/Cart.
1	176398	DF Pearl M1	1	Black	182654 (1 cav.)	Ø220x42	990	320
2	176397	DF Pearl M2	2	Black	182654 (1 cav.)**	Ø220x42	525/350	300
3	176396	DF Pearl L1	1	Black	182653 (1 cav.)	Ø250x42	1390	350
4	176395	DF Pearl L2	2	Black	182653 (1 cav.)**	Ø250x42	750/490	300
5	176394	DF Pearl L3	3	Black	182653 (1 cav.)**	Ø250x42	590/370/238	300
6	176399	Lid for 176398/176397	-	Transparent	-	Ø257	-	220
7	176400	Lid for 176396/176395/ 176394	-	Transparent	-	Ø289	-	240

*With figure cutting.

**Only outer rim will be sealed.



PP/MINERAL TAKE-AWAY TRAYS

Material: PP -20°C to +120°C

PP/MIN: -20°C to +120°C

Temp (Time): +120°C (1h), +70°C (4h), +40°C (10days), -20°C (unlimited)



No.	Article	Description	Comp	Colour	Cassette	DF10/20*	Material	Size LxWxH (mm)	Vol (ml)	Qty/Cart.
1	161149	Take-Away Tray	1	Black	150020		PP/MIN	250x159x43	1100	1x246
2	155054	Take-Away Tray	1	White	150020		PP	250x159x43	1100	1x246
3	154063	Take-Away Tray	1	Black	150020		PP	250x159x55	1400	1x228
4	154486	Take-Away Tray	1	White	150020		PP	250x159x55	1400	1x228
5	154064	Take-Away Tray	1	Black	150020		PP	250x159x70	1750	1x220
6	154487	Take-Away Tray	1	White	150020		PP	250x159x70	1750	1x220
7	161150	Take-Away Tray	2	Black	150021		PP/MIN	250x159x45	700/400	1x246
8	155055	Take-Away Tray	2	White	150021		PP	250x159x45	700/400	1x246
9	161151	Take-Away Tray	3	Black	150022		PP/MIN	250x159x48	550/350/200	1x246
10	155056	Take-Away Tray	3	White	150022		PP	250x159x48	550/350/200	1x246
11	154755	Take-Away Tray	5	Black	155621		PP	250x159x46	85/115/180/270/290	1x240
12	161164	Small Take-Away Tray	1	Black	161171		PP/MIN	215x148x41	900	1x336
13	161165	Small Take-Away Tray	2	Black	161172		PP/MIN	215x148x47	500/400	1x332

*No. 1-6 DF15/DF25 cassette, 165911 (2 cav.) also available.

No. 7-8 DF15/DF25 cassette, 182975 (2 cav.) also available.

No. 9-10 DF15/DF25 cassette, 173050 (2 cav.) also available.

No. 12 DF15/DF25 cassette, 165913 (2 cav.) also available.

No. 13 DF15/25 cassette, 173051 (2 cav.) also available.



APET LID FOR TAKE-AWAY TRAYS

Material: APET -40°C to +70°C

Temp (Time): +70°C (2h), +40°C (10days), -40°C (unlimited)



No	Article	Description	Colour	Size LxWxH (mm)	Qty/Cart.
1	155620	Lid for Take-Away Trays	Transparent	256x163x12	1x246





PP HMR TRAYS

Material: PP -20°C to +120°C
Temp (Time): +120°C (1h), +100°C (2h), +70°C (2h), +40°C (10days), -20°C (unlimited)



No.	Article	Description	Comp	Colour	Cassette DF10/20*	Size (mm) LxWxH	Vol (ml)	Qty/ Cart.
1	171000	HMR Tray	1	Black	140156	215x148x40	840	1x328
2	171001	HMR Tray	1	White	140156	215x148x40	840	1x328
3	171002	HMR Tray	1	Black	140156	215x148x50	1035	1x312
4	171003	HMR Tray	1	White	140156	215x148x50	1035	1x312
5	171004	HMR Tray	1	Black	140156	215x148x70	1395	1x232
6	171005	HMR Tray	2	Black	140155	215x148x50	540/400	1x312
7	171006	HMR Tray	2	White	140155	215x148x50	540/400	1x312

* No. 1-5 DF15/DF25 cassette, 152415 (2 cav.), also available.
No. 6-7 DF15/25 cassette, 172698 (2 cav.), also available.



APET LID FOR HMR TRAYS

Material: APET -40°C to +70°C
Temp (Time): +70°C (2h), +40°C (10days), -40°C (unlimited)



No.	Article	Description	Colour	Size LxWxH (mm)	Qty/Cart.
1	175050	Lid for HMR Trays	Transparent	221x154x14	1x312





PP CATER LINE TRAYS

Material: PP -20°C to +120°C
Temp (Time): +120°C (1h), +100°C (2h), +70°C (4h),
+40°C (10days), -20°C (unlimited)



No.	Article	Description	Comp	Colour	Cassette DF10/20*	Size (mm) LxWxH	Vol (ml)	Qty/ Cart.
1	162146	Cater Line Tray	1	Black	140162	227x178x32	920	1x216
2	159179	Cater Line Tray	1	White	140162	227x178x32	920	1x216
3	162150	Cater Line Tray	1	Black	140162	227x178x40	1115	1x216
4	162153	Cater Line Tray	1	White	140162	227x178x40	1115	1x216
5	160063	Cater Line Tray	1	Black	140162	227x178x50	1345	1x216
6	162343	Cater Line Tray	1	White	140162	227x178x50	1345	1x216
7	162147	Cater Line Tray	2	Black	159176	227x178x32	440/370	1x216
8	159180	Cater Line Tray	2	White	159176	227x178x32	440/370	1x216
9	162151	Cater Line Tray	2	Black	159176	227x178x40	550/480	1x216
10	162154	Cater Line Tray	2	White	159176	227x178x40	550/480	1x216
11	160064	Cater Line Tray	2	Black	159176	227x178x50	645/540	1x216
12	162344	Cater Line Tray	2	White	159176	227x178x50	645/540	1x216
13	162303	Cater Line Tray	3	Black	159177	227x178x32	350/225/170	1x216
14	159178	Cater Line Tray	3	White	159177	227x178x32	350/225/170	1x216
15	162152	Cater Line Tray	3	Black	159177	227x178x40	445/280/205	1x216
16	162155	Cater Line Tray	3	White	159177	227x178x40	445/280/205	1x216
17	160065	Cater Line Tray	3	Black	159177	227x178x50	530/325/235	1x216
18	162345	Cater Line Tray	3	White	159177	227x178x50	530/325/235	1x216

*No. 1-6 DF15/DF25 cassette, 153432 (2 cav.), also available
No. 7-12 DF15/DF25 cassette, 163449 (2 cav.), also available
No. 13-18 DF15/DF25 cassette, 163450 (2 cav.), also available



APET LID FOR CATER LINE TRAYS

Material: APET -40°C to +70°C
Temp (Time): +70°C (2h), +40°C (10days), -40°C (unlimited)



No.	Article	Description	Colour	Size (mm) LxWxH	Qty/ Cart.
1	171200	Lid for Cater Line Trays	Transparent	232x183x16	1x372





PP 1/4 GN MENU TRAYS

Material: PP -20°C to +120°C.

Temp (Time): +120°C <60min, +100°C <30min, +70°C <240min, +40°C <10days



NEW

No.	Article	Description	Comp	Colour	Cassette DF10/20*	Size LxWxH (mm)	Vol (ml)	Qty/Cart.
1	181900	1/4 GN Menu Tray	1	Black	140149	263x161x40	1165	1x225
2	181901	1/4 GN Menu Tray	1	White	140149	263x161x40	1165	1x225
3	181902	1/4 GN Menu Tray	2	Black	140150	263x161x43	630/490	1x225
4	181903	1/4 GN Menu Tray	2	White	140150	263x161x43	630/490	1x225
5	181904	1/4 GN Menu Tray	3	Black	140151	263x161x45	5490/370/200	1x225
6	181905	1/4 GN Menu Tray	3	White	140151	263x161x45	490/370/200	1x225
5	181906	Lid for 1/4 GN Menu Trays -		Transparent	-	272x173	-	1x225

*DF15/25 cassette, 152407 (2 cav.), also available.





PP/MINERAL BOWLS

- Handles to prevent burned hands

Material: PP/MIN -20°C to +120°C

PP: -20°C to +120°C

Temp (Time): +120°C (1h), +70°C (4h), +40°C (10days), -20°C (unlimited)



No.	Article	Description	Colour	Material	Cassette DF10/20*	Size(mm) LxWxH	Vol (ml)	Qty/ Cart.
1	177907	Bowl	Black	PP/MIN	148354 D	153x153x45	350	1x480
2	177908	Bowl	Black	PP/MIN	148354 D	153x153x60	500	1x480
3	177909	Bowl	Black	PP/MIN	148354	153x153x70	650	1x480
4	177910	Lid for bowls	Transparent	PP	-	159x159x22	-	1x480

* DF15/DF25 cassette, 168939 (2 cav.), also available



1



2



3



4

APET BAGUETTE TRAY

Material: APET -40°C to +70°C

Temp (Time): +70°C (2h), +40°C (10days), -40°C (unlimited)



1

No.	Article	Description	Comp	Colour	Cassette DF10/20*	Size (mm) LxWxH	Vol (ml)	Qty/ Cart.
1	112060	Baguette Tray	1	Transparent	140157	260x110x68	1150	5x70

*DF15/DF25 cassette, 152414 (3 cav.), also available

PP SIDE DISH TRAYS

Material: PP -20°C to +120°C
Temp (Time): +120°C (1h), +70°C (4h), +40°C (10days), -20°C (unlimited)



No.	Article	Description	Comp	Colour	Cassette DF10/20	Size LxWxH (mm)	Vol (ml)	Qty/Cart.
1	758512	Side Dish Tray	1	Black	140152 (2 cav.)*	138x114x35	350	1x300
2	758510	Side Dish Tray	1	White	140152 (2 cav.)*	138x114x35	350	1x300
3	758516	Side Dish Tray	1	Transparent	140152 (2 cav.)*	138x114x35	350	1x300
4	758002	Side Dish Tray	1	Black	140152 (2 cav.)*	138x114x53	470	1x300
5	758000	Side Dish Tray	1	White	140152 (2 cav.)*	138x114x53	470	1x300
6	758006	Side Dish Tray	1	Transparent	140152 (2 cav.)*	138x114x53	470	1x300
7	758602	Side Dish Tray	1	Black	140152 (2 cav.)*	138x114x70	630	1x276
8	758601	Side Dish Tray	1	White	140152 (2 cav.)*	138x114x70	630	1x276
9	758606	Side Dish Tray	1	Transparent	140152 (2 cav.)*	138x114x70	630	1x276
10	757502	Side Dish Tray	2	Black	140153 (2 cav.)	138x114x53	220/140	1x480
11	757501	Side Dish Tray	2	White	140153 (2 cav.)	138x114x53	220/140	1x480
12	757506	Side Dish Tray	2	Transparent	140153 (2 cav.)	138x114x53	220/140	1x480
13	182376	Lid for side dish tray		Transparent	-	140x122	-	1x900

* No. 1-9 DF15/DF25 cassette, 152411 (4 cav.), also available.





PP 1/6 & 1/4 GN TRAYS

Material: PP -20°C to +120°C
 Temp (Time): +120°C (1h), +100°C (2h), +70°C (2h),
 +40°C (10days), -20°C (unlimited)



No.	Article	Description	Colour	Cassette DF15/25*	Size LxWxH (mm)	Vol (ml)	Qty/Cart.
1	171807	1/6 GN Tray	Black	171941 (2 cav.)	176x162x60	1000	1x318
2	171808	1/6 GN Tray	Black	171941 (2 cav.)	176x162x100	1600	1x300
3	152345	1/4 GN Tray	Black	DF15 168940 / DF25 147611 (2 cav.)	265x161x60	1650	1x200
4	152344	1/4 GN Tray	White	DF15 168940 / DF25 147611 (2 cav.)	265x161x60	1650	1x200
5	115580	1/4 GN Tray	Black	DF15 168940 / DF25 147611 (2 cav.)	265x161x80	2000	1x200
6	117100	1/4 GN Tray	Black	DF15 168940 / DF25 147611 (2 cav.)	265x161x100	2600	1x192
7	740102	1/4 GN Tray	Black	152407 (2 cav.)	265x162x50	1500	1x200
8	740100	1/4 GN Tray	White	152407 (2 cav.)	265x162x50	1500	1x200
9	740202	1/4 GN Tray	Black	152407 (2 cav.)	265x162x70	2000	1x150
10	740200	1/4 GN Tray	White	152407 (2 cav.)	265x162x70	2000	1x150
11	150260	1/4 GN Tray	Transparent	152407 (2 cav.)	265x162x70	2000	1x150

* No. 1 DF10/20 cassette, 171940, also available
 No. 2 DF10 cassette, 171940, also available
 No. 3-4 DF10/20 cassette, 147609, also available
 No. 5-6 DF10 cassette, 147609, also available
 No. 7-11 DF10/20 cassette, 140149, also available



PP 1/1, 1/2 & 1/3 GN TRAYS

Material: PP -20°C to +120°C

PP/MIN -20°C to +120°C

Temp (Time): +120°C (1h), +70°C (2h), +40°C (10days), -20°C (unlimited)



No.	Article	Description	Comp	Colour	Cassette DF15/25	Material	Size LxWxH (mm)	Vol (ml)	Qty/Cart.
1	166879	1/3 GN Tray	1	Black	150023	PP	325x176x65	2500	1x144
2	142529	1/3 GN Tray	1	White	150023	PP	325x176x65	2500	1x144
3	133726	1/2 GN Tray	1	Black	141550	PP	325x265x40	2700	1x100
4	114040	1/2 GN Tray	1	White	141550	PP	325x265x40	2700	1x100
5	168629	1/2 GN Tray	1	Black	141550	PP	325x265x50	3400	1x100
6	114050	1/2 GN Tray	1	White	141550	PP	325x265x50	3400	1x100
7	161152	1/2 GN Tray	1	Black	141550	PP/MIN	325x265x60	4000	1x100
8	114060	1/2 GN Tray	1	White	141550	PP	325x265x60	4000	1x100
9	115543	1/2 GN Tray	1	Black	141550	PP	325x265x80	5000	1x96
10	114080	1/2 GN Tray	1	White	141550	PP	325x265x80	5000	1x96
11	115544	1/2 GN Tray	1	Black	141550	PP	325x265x100	6300	1x92
12	114100	1/2 GN Tray	1	White	141550	PP	325x265x100	6300	1x92
13	171654	1/2 GN Tray	2	Black	141550	PP	325x265x50	2x1600	1x100
14	166027	1/1 GN Tray	1	Black	Not sealable	PP	530x325x60	8175	1x48





1



2



1

APET LIDS FOR 1/1 & 1/2 GN TRAYS

Material: APET -40°C to +70°C
Temp (Time): +70°C (2h), +40°C (10days), -40°C (unlimited)

No.	Article	Description	Colour	Size (mm) LxWxH	Qty/ Cart.
1	160801	Lid for 1/2 GN Trays	Transparent	325x266	1x60
2	166026	Lid for 1/1 GN Tray	Transparent	530x325	1x32

DUNIFORM® INSIDER

- Developed for sealing gratinated food
- Holds shape when heated or carried
- Fits Duniform® PP trays 115543 and 114080 perfectly
- Elegant look

Material: CRD/PET -40°C to +220°C
Time: +220°C (1h), +70°C (2h), -40°C (unlimited)



No	Article	Description	Comp.	Colour	Suitable for	Material	Size LxWxH (mm)	Vol (l)	Qty/ Cart.
1	172380	Duniform Insider	1	White	1/2 GN Trays with 80mm height	CRD/PET	290x245x73	2,5-3 l	1x100
2	177559	Duniform Insider	1	White	1/2 GN Trays with 60mm height	CRD/PET	285x240x58	2,0-2,5 l	1x100



CPET 1/3 & 1/2 GN TRAYS

ecoecho®

Material: CPET -40°C to +220°C

Temp (Time): +220°C (2h), +70°C (2h), +40°C (10days), -40°C (unlimited)



No.	Article	Description	Colour	Cassette DF15/25	Size LxWxH (mm)	Vol (ml)	Qty/Cart.
1	171806*	1/3 GN Tray	Black	150023	325x176x60	2400	1x174
2	176605*	1/3 GN Tray	White	150023	325x176x60	2400	1x174
3	115511	1/2 GN Tray	Black	141550	325x265x50	3350	1x90
4	159586*	1/2 GN Tray	White	141550	325x265x50	3350	1x116
5	176602*	1/2 GN Tray	White	141550	325x265x60	3900	1x124
6	131280*	1/2 GN Tray	Black	141550	325x265x79	5100	1x80
7	103726*	1/2 GN Tray	White	141550	325x265x79	5100	1x80

* Recycled CPET



1



2



3



4



5



6



7

FILMS THAT PROMOTE YOUR BUSINESS

If you want to make your food look delicious, encourage impulse purchases and ensure a leak-free, secure fit, Duniform® films tick the boxes. You can choose between PP, PET and Universal films. These are crystal clear and can be specified to prevent fogging. Even better, we can personalise them for your business – making your packaging a powerful promotional tool.



In today's globalised world, there is a growing demand for individualisation. Customising films offers a simple, cost-effective way to meet this need – and build your brand. Our customisation team can organise this for you.

SEALING FILM FOR PP TRAYS



No.	Article	Cooking temp. max °C	Sealing temp.	DF 10	DF 20	DF 15/25	DF 22	DF 32	DF 36	DF 44	DF 46	Thickness µm	Size mm x m	Roll Ø mm	Qty/ Cart.
1	147974	100 (30min)	150 – 180°C	•	•	•	•	-	-	-	-	50	154x250	174	1
2	147975	100 (30min)	150 – 180°C	•	•	•	•	-	-	-	-	50	172x250	174	1
3	147910	100 (30min)	150 – 180°C	•	•	•	•	-	-	-	-	50	185x250	174	1
4	108078	100 (30min)	150 – 180°C	-	-	•*	•	•	-	-	-	50	230x500	227	1
5	107074	100 (30min)	150 – 180°C	-	-	•*	-	•	-	-	-	50	272x500	227	1
6	106576	100 (30min)	150 – 180°C	-	-	-	-	•	•	•	•	50	315x500	227	1
7	107075	100 (30min)	150 – 180°C	-	-	-	-	•	•	•	•	50	340x500	227	1
8	107073	100 (30min)	150 – 180°C	-	-	-	-	•	•	•	•	50	380x500	227	1
9	191010	100 (30min)	150 – 180°C	-	-	-	-	•	•	•	•	50	390x500	227	1
10	151548	100 (30min)	150 – 180°C	-	-	-	-	-	-	•	•	50	415x500	227	1

* Only with spike roll

SEALING FILM FOR PET TRAYS



No.	Article	Cooking temp. max °C	Sealing temp.	DF 10	DF 20	DF 15/25	DF 22	DF 32	DF 36	DF 44	DF 46	Thickness µm	Size mm x m	Roll Ø mm	Qty/ Cart.
1	162792	210 (30min)	160 – 250°C	-	-	-	•	-	-	-	-	40	115x400	175	1
2	162800	210 (30min)	160 – 250°C	-	-	-	•	-	-	-	-	40	185x400	175	1
3	162801	210 (30min)	160 – 250°C	-	-	-	•	•	-	-	-	40	240x400	175	1
4	162802	210 (30min)	160 – 250°C	-	-	-	-	•	-	-	-	40	272x400	175	1
5	162804	210 (30min)	160 – 250°C	-	-	-	-	•	•	•	•	40	340x400	175	1
6	162805	210 (30min)	160 – 250°C	-	-	-	-	•	•	•	•	40	380x400	175	1
7	162806	210 (30min)	160 – 250°C	-	-	-	-	•	•	•	•	40	390x400	175	1
8	162807	210 (30min)	160 – 250°C	-	-	-	-	-	-	•	•	40	410x400	175	1
9	162808	210 (30min)	160 – 250°C	-	-	-	-	-	-	•	•	40	446x400	175	1

UNIVERSAL SEALING FILM FOR PP/PET TRAYS



No.	Article	Cooking temp. max °C	Sealing temp.	DF 10	DF 20	DF 15/25	DF 22	DF 32	DF 36	DF 44	DF 46	Thickness µm	Size mm x m	Roll Ø mm	Qty/ Cart.
1	159847	180 (30min)	140 – 210°C	•	•	-	-	-	-	-	-	42	154x400	177	1
2	174553	180 (30min)	140 – 210°C	•	•	•	-	-	-	-	-	42	172x400	177	1
3	159848	180 (30min)	140 – 210°C	•	•	•	-	-	-	-	-	42	185x400	177	1
4	159849	180 (30min)	140 – 210°C	-	-	•	-	-	-	-	-	42	230x400	177	1
5	159850	180 (30min)	140 – 210°C	-	-	•	-	-	-	-	-	42	272x400	177	1
6	159851	180 (30min)	140 – 210°C	-	-	-	-	-	-	•	•	42	340x400	177	1
7	159843	180 (30min)	140 – 210°C	-	-	-	-	-	-	•	•	42	380x400	177	1
8	159844	180 (30min)	140 – 210°C	-	-	-	-	-	-	•	•	42	390x400	177	1
9	159845	180 (30min)	140 – 210°C	-	-	-	-	-	-	•	•	42	415x400	177	1
10	159846	180 (30min)	140 – 210°C	-	-	-	-	-	-	•	•	42	445x400	177	1

DF22/DF22F



DF25



DF20



DF15



DF10



DF5



A MACHINE FOR EVERY NEED

Our in-house team can help you choose the optimal Duniform® machine for your company. While each machine suits different businesses – from small delis to industrial-scale HMR firms – they are all designed with simplicity in mind. Whatever model you choose, the cassettes can be changed in moments.



FOR GLASSES

Serve sealed ecoecho® RPET glasses with speed and style.

DF32/DF32F



DF36



DF44

DF46

**MANUAL**

Simply lift and close the lid to seal your filled tray.

**SEMI-AUTOMATIC**

Place the filled tray in the cassette and the machine does the rest.

**FULLY-AUTOMATIC**

The machine winds the trays, and is capable of large volumes.

MACHINES

Duni offers a variety of machines in its Duniform® Sealing Concept. Whatever your requirements or budget, we are certain you will find the right sealing solution for your operation.



General Information	DF5	DF10	DF15	DF20	DF25	DF22	DF22F
Article number	700075	700080	163140	700095	700090	163141	164795
Machine weight	22 kg	13 kg	25 kg	20 kg	43 kg	30 kg	30 kg
Cassette weight	0,5 kg	0,5 kg	2,5 kg	0,5 kg	2,5 kg	1,0 kg	1,0 kg
Electrical data	220 V~, AC 50/60 Hz	230 V~, AC 50 Hz 10 A	230 V~, AC 50 Hz 10 A	230 V~, AC 50 Hz 10 A	230 V~, AC 50 Hz 10 A	230 V~, AC 50 Hz 10 A	230 V~, AC 50 Hz 10 A
Maximum power consumption	0,4 kW	0,7 kW	1,0 kW	0,75 kW	1 kW	0,8 kW	1,0 kW
Lengths of cable/ connection plug	2m/1-phase grounded	2,5 m / 1-phase grounded	2,5 m / 1-phase grounded	2,5 m / 1-phase grounded	2 - 3 m/1-phase grounded	2,0 m / 1-phase grounded	2,0 m / 1-phase grounded
Pressing force		930 N	930 N	1003 N	1003 N	1400 N	1400 N
Capacity	6-10 cycles/ min	8 cycles/min	8 cycles/min	10 cycles/min	10 cycles/min	2 - 4 cycles/ min	2 - 4 cycles/ min
Start-up heating time	5-10 min	15 min	20 min	15 min	20 min	10 min	10 min
Dimensions	DF5	DF10	DF15	DF20	DF25	DF22	DF22F
Length	350 mm base	640 mm (with handle) 540 mm (base)	830 mm (with handle) 740 mm (base)	615 mm	760 mm	550 mm	550 mm
Width	360 mm	240 mm	560 mm	220 mm	355 mm	325 mm	325 mm
Height	610 mm	260 mm (closed) 500 mm (open)	270 mm (closed) 660 mm (open)	220 mm (closed) 520 mm (open)	350 mm (closed) 650 mm (open)	450 mm	450 mm
Trays/Film/Sealing	DF5	DF10	DF15	DF20	DF25	DF22	DF22F
Maximum sealable dimension (length x width x depth)	Ø 98 mm	265x175x100 mm (>¼ GN)	325x265x100 mm (½ GN)	265x175x70 mm (>¼ GN)	325x265x100 mm (½ GN)	230x280x100 mm (>¼ GN)	230x280x100 mm (>¼ GN)
Maximum film width	130 mm	185 mm	272 mm	185 mm	272 mm	240 mm	240 mm
Sealing temperature	max 200°C	max 210°C	max 210°C	max 190°C	max 180°C	max 210°C	max 210°C
Sealing technique	Semi- automatic	Manual	Manual	Semi- automatic	Semi- automatic	Semi- automatic	Semi- automatic
MAP - Modified Atmosphere Packaging	-	-	-	-	-	-	-
Vacuum chambers	-	-	-	-	-	-	-
Figure cutting	Yes	-	-	-	-	-	Yes



DF32	DF32F	DF36	DF44	DF46
160900	159788	191000	160901	163142
approx. 40 kg	approx. 40 kg	approx. 100 kg	approx. 190 kg	approx. 550 kg
approx. 1,5 – 2,5 kg	approx. 3 – 4 kg	approx. 3 – 4 kg	approx. 4 – 6 kg	approx. 3 – 5 kg
230 V~, AC 50/60 Hz	230 V~, AC 50/60 Hz	230 V~, AC 50/60 Hz	400 V~, AC 50/60 Hz	400 V~, AC 50/60 Hz
1,8 kW	1,8 kW	2,5 kW	4,3 kW	6,3 kW
2 m / 1-phase grounded	2 m / 1-phase grounded	1,5 m / 1-phase grounded	- / 3-phase grounded	- / 3-phase grounded
2000 N	2000 N	2000 N	7000 N	-
2 – 4 cycles/min	2 – 4 cycles/min	2 with MAP, 2 – 6 without MAP	3 with MAP, 2 – 6 without MAP	2-4 with MAP, 5-8 without MAP
10 min	10 min	10 min	20 min	10 min
DF32	DF32F	DF36	DF44	DF46
550 mm	550 mm	650 mm	970 mm	2580 mm
475 mm	475 mm	530 mm	675 mm	905 mm
450 mm	450 mm	625 mm	1570 mm	1640 mm
DF32	DF32F	DF36	DF44	DF46
380x280x100 mm (>½ GN)	370x275x100 mm (>½ GN)	360x270x100 mm (>½ GN)	430x315x95 mm (>½ GN)	360x270x100 mm (>½ GN)
390 mm	390 mm	390 mm	470 mm	446 mm
max 200°C	max 200°C	max 200°C	max 200°C	max 200°C
Semi- automatic	Semi- automatic	Semi- automatic	Semi- automatic	Automatic
-	-	Yes	Yes	Yes
-	-	1	1	1
-	Yes	Yes	Yes	Yes

DUNIFORM® DF5 SEALING MACHINE CONCEPT

Health is wealth. No wonder that today's consumers are opting for nutritious, hygienically-served food and drinks: smoothies, freshly squeezed juices, protein shakes and healthy snacks are extremely popular.

At the same time, customers everywhere are actively seeking solutions that are healthy for the future of the planet.

The new Duniform® DF5 concept lets you deliver the best of both worlds – while optimising hygiene, minimising waste and working with effortless efficiency.



Discover how to hygienically seal a delicious nutritious smoothie with the DF5.



**HYGIENICALLY SEALING IN
FRESHNESS AND AVOIDING
SPILLS IS GOOD FOR
CUSTOMERS AND BUSINESS.**





SWEET CUP

Material: BAGASSE/PLA: up to +100°C
PLA max +40°C

ecoecho®



NEW

No.	Article	Description	OK Compost	Colour	Material	Volume (ml)	Qty./Cart.	DF5 Cassette
1	182533	Sweet Cup ecoecho®	*	Printed	Bagasse	350	18x50	191377
2	182534	Sweet Cup ecoecho®	*	Printed	Bagasse	470	25x36	191377
3	191668	Flat Lid with cross for 182533/182534		Transparent	PLA	-	12x75	-
4	191669	Dome Lid for with hole 182533/182534		Transparent	PLA	-	12x75	-



1

2

3 New

4 New

RPET CRYSTAL GLASSES

Material: RPET 70°C
PP max +100°C (microwarmable)

ecoecho®



No	Article	Description	Material	Colour	Volume (ml)	Size	Pcs/SKU	DF5 Cassette
1	188001	Crystal Glass	RPET	Transparent	270	-	16x60	191380
2	188002	Crystal Glass	RPET	Transparent	360	-	16x60	191380
3	188004	ecoecho® RPET Crystal Glass	RPET	Transparent	410 (0,3l)	-	16x50	191378
4	188005	ecoecho® RPET Crystal Glass	RPET	Transparent	470 (0,4l)	-	16x50	191378
5	188006	ecoecho® RPET Crystal Glass	RPET	Transparent	590 (0,5l)	-	16x50	191378
6	188003	Crystal Glass Insert to be sealed with 188004-188006	RPET	Transparent	120	-	16x30	191377
7	188014	Crystal Glass Insert for 188004 / 188005 / 188006	RPET	Transparent	250	-	16x50	191381
8	188013	Crystal Glass Insert to be sealed with 188004-188006	RPET	Transparent	180	-	16x30	191377
9	188011	ecoecho® RPET Flat Lid (w cross)	RPET	Transparent	-	-	20x50	-
10	177998	ecoecho® RPET Flat Lid (w/o hole)	RPET	Transparent	-	-	20x50	-
11	188012	ecoecho® RPET Dome Lid (w hole)	RPET	Transparent	-	-	20x50	-
12	188016	Smoothie Straw	PP	Transparent	-	230mm	20x300	-
13	188017	Smoothie Straw	PP	Black	-	230mm	20x300	-



1

2

3

4

5

6

7

8

9

10

11

12

13



1

CARDBOARD/PLA BOWLS

Material: Cardboard/PLA max +100°C

ecoecho®



No	Article	Description	Material	Size LxWxH (mm)	Volume (ml)	Qty/ Cart.	DF5 Cassette
1	170732*	Cardboard Bowl ecoecho®	Cardb./PLA	90x90x62	250	8x50	191377

*Remove film before reheating in microwave



1



2

CARDBOARD BOWLS

Material: Cardboard/PP max +120°C (microwarmable)



No.	Article	Description	Material	Size (mm) LxWxH	Vol (ml)	Qty/ Cart.	DF5 Cassette
1	168006*	Soup Bowl	Cardboard/PP	91x91x85	355	20x25	191377
2	168007	Soup Bowl* **	Cardboard/PP	97x97x99	485	24x40	191377

*Remove film before reheating in microwave



1



2



3



4



5

DELIPACK

Material: PP max +100°C (microwarmable)



No.	Article	Description	Size (mm) LxWxH	Vol (ml)	Qty/ Cart.	DF5 Cassette
1	156421*	Delipack Round	101x101x30	125	20x50	191382
2	156422*	Delipack Round	101x101x37	200	20x50	191382
3	156423*	Delipack Round	101x101x48	250	20x50	191382
4	156424*	Delipack Round	101x101x61	300	20x50	191382
5	156425*	Delipack Round	101x101x102	500	20x50	191382

*Remove film before reheating in microwave





DF5

- Small & compact
- Easy and fast

General Information

Article number	700075
Machine weight	22 kg
Cassette weight	0,5 kg
Electrical data	220 V~, AC 50/60 Hz
Maximum power consumption	0,4 kW
Lengths of cable / connection plug	2m/1-phase grounded
Pressing force	
Capacity	6-10 cycles/min
Start-up heating time	5-10 min

Trays/Film/Sealing

Maximum sealable glass dimension	Ø 98 mm
Maximum film width	130 mm
Sealing temperature	max 200°C
Sealing technique	Semi-automatic
Sealing film	188059 / Ø 177 mm

DF5 CASSETTES & FILM

No	Article	Description	Colour	Size (mm)	Qty./Cart.
1	191378*	Cassette DF5 1-Cav Ø 98	Black	Ø 98	1x1
2	191377	Cassette DF5 1-Cav Ø 80	Red	Ø 80	1x1
3	191380	Cassette DF5 1-Cav Ø 90	Blue	Ø 90	1x1
4	191381	Cassette DF5 1-Cav Ø 95	Silver	Ø 95	1x1
5	191382	Cassette DF5 1-Cav Ø 100	Green	Ø 100	1x1
6	188059	Sealing Film, 42 µ, 130 mm x 400 m	Transparent	Ø 177	1x1

*Included in DF5 machine



STANDARD SIZES, STANDOUT STYLE

Duniform® trays come in elegant 'straight to the table' formats to suit all types of frozen, chilled and warm food. They also offer a wide variety of GN compartment sizes, giving you full control over volumes, costs and end-user experience. The icing on the cake? They are designed for convenient stackability and transport too.



OPTIMISE
CONVENIENCE AND
COST-MANAGEMENT



1. Put the filled tray in the cassettes / machine.

2. Pull the film with two hands over the tray.

3. Push the lid of the machine down until it starts to seal.

4. The machine opens automatically once the tray is sealed (except manual machines DF10/15).



DF10

- Small & compact
- Easy and fast

General Information

Article number	700080
Machine weight	13 kg
Cassette weight	0,5 kg
Electrical data	230 V~, AC 50 Hz 10 A
Maximum power consumption	0,7 kW
Lengths of cable / connection plug	2,5 m / 1-phase grounded
Pressing force	930 N
Capacity	8 cycles/min
Start-up heating time	15 min

Trays/Film/Sealing

Maximum sealable tray dimension	265 x 175 x 100 mm (>¼ GN)
Maximum film width	185 mm
Sealing temperature	max 210°C
Sealing technique	Manual

Accessories

Spike Roll DF10	155198
Trolley	887120

DF15

- Seals sizes up to 1/2 GN
- Easy & fast

General Information

Article number	163140
Machine weight	25 kg
Cassette weight	2,5 kg
Electrical data	230 V~, AC 50 Hz 10 A
Maximum power consumption	1,0 kW
Lengths of cable / connection plug	2,5 m / 1-phase grounded
Pressing force	930 N
Capacity	8 cycles/min
Start-up heating time	20 min

Trays/Film/Sealing

Maximum sealable tray dimension	325 x 265 x 100 mm (½ GN)
Maximum film width	272 mm
Sealing temperature	max 210°C
Sealing technique	Manual

Accessories

Adapter for DF20/10 Cassettes	141549
Spike Roll DF10	155198
Trolley	887120





DF20

- Semi-automatic
- Light and robust
- Digital display

General Information

Article number	700095
Machine weight	20 kg
Cassette weight	0,5 kg
Electrical data	230 V~, AC 50 Hz 10 A
Maximum power consumption	0,75 kW
Lengths of cable / connection plug	2,5 m / 1-phase grounded
Pressing force	1003 N
Capacity	10 cycles/min
Start-up heating time	15 min

Trays/Film/Sealing

Maximum sealable tray dimension	265 x 175 x 70 mm (>¼ GN)
Maximum film width	185 mm
Sealing temperature	max 190°C
Sealing technique	Semi-automatic

Accessories

Cassette Rack DF20	102014
Spike Roll DF10	102903
Trolley	887120

DF25

- Seals sizes up to 1/2 GN
- Robust
- Semi-automatic

General Information

Article number	700090
Machine weight	43 kg
Cassette weight	2,5 kg
Electrical data	230 V~, AC 50 Hz 10 A
Maximum power consumption	1,0 kW
Lengths of cable / connection plug	2-3 m / 1-phase grounded
Pressing force	1003 N
Capacity	10 cycles/min
Start-up heating time	20 min

Trays/Film/Sealing

Maximum sealable tray dimension	325 x 265 x 100 mm (½ GN)
Maximum film width	272 mm
Sealing temperature	max 190°C
Sealing technique	Semi-automatic

Accessories

Adapter for DF20/10 Cassettes	141549
Spike Roll DF10	108824
Trolley	887100



Largeur 300 mm (base)
340 mm avec le bouton de verrouillage



DF22/22F

- Small & compact
- Semi-automatic
- Figure cutting available

General Information

Article number	163141/164795
Machine weight	30 kg
Cassette weight	1,0 kg
Electrical data	230 V~, AC 50 Hz 10 A
Maximum power consumption	0,8 kW
Lengths of cable / connection plug	2,0 m / 1-phase grounded
Pressing force	1400 N
Capacity	2-4 cycles/min
Start-up heating time	10 min

Trays/Film/Sealing

Maximum sealable tray dimension	230 x 280 x 100 mm (>¼ GN)
Maximum film width	240 mm
Sealing temperature	max 210°C
Sealing technique	Semi-automatic
Figure cutting	Yes (164795)

Accessories

Spike Roll DF22/22F	168744
Trolley	887100
Trolley	161965

DF32/32F

- Seals sizes larger than 1/2 GN
- Small & compact
- Figure cutting available

General Information

Article number	160900/159788
Machine weight	approx. 40 kg
Cassette weight	2-3 kg
Electrical data	1/N/PE 230 V~, AC 50/60 Hz
Maximum power consumption	1,8 kW
Lengths of cable / connection plug	2 m / 1-phase grounded
Pressing force	2000 N
Capacity	2-3 cycles/min
Start-up heating time	10 min

Trays/Film/Sealing

Maximum sealable tray dimension	380 x 280 x 100 mm (>½ GN)
Maximum film width	390 mm
Sealing temperature	max 200°C
Sealing technique	Semi-automatic
Figure cutting	Yes (159788)

Accessories

Spike Roll DF32/32F	164020
Trolley	887120
Trolley	161965





DF36

- Compact & robust
- Figure cutting
- Programmable cycles
- MAP

General Information	
Article number	191000
Machine weight	approx. 100 kg
Cassette weight	3- 4 kg
Electrical data	1/N/PE 230 V~, AC - 50/60 Hz
Maximum power consumption	2,5 kW
Lengths of cable / connection plug	1,5 m / 1-phased grounded
Pressing force	2000 N
Capacity	2 with MAP, 2 - 6 without MAP
Start-up heating time	10 min
Trays/Film/Sealing	
Maximum sealable tray dimension	360 x 270 x 100 mm (>½ GN)
Maximum film width	390 mm
Sealing temperature	max 200°C
Sealing technique	Semi-automatic
Vacuum chambers	1
Figure cutting	Yes
Accessories	
Spike Roll DF36	168744
Vacuum Pump 20m³/h	166472
Trolley	887100
Trolley	161965



DF44

- MAP
- Robust
- Automatic film winding
- Figure cutting

General Information	
Article number	160901
Machine weight	approx. 190 kg
Cassette weight	4-6 kg
Electrical data	3/N/PE 400 V~, AC - 50/60 Hz
Maximum power consumption	4,3 kW
Lengths of cable / connection plug	- / 3-phase
Pressing force	7000 N
Capacity	3 with MAP, 2 - 6 without MAP
Start-up heating time	20 min
Trays/Film/Sealing	
Maximum sealable tray dimension	430 x 315 x 95 mm (>½ GN)
Maximum film width	470 mm
Sealing temperature	max 200°C
Sealing technique	Semi-automatic
MAP - Modified Atmosphere Packaging	Yes
Vacuum chambers	1
Figure cutting	Yes
Accessories	
Spike Roll DF44	164020
Compressor	152556
High Oxygen Vacuum Pump 40 m³/h	166473
High Oxygen Vacuum Pump 60 m³/h	166474
Food Filter DF44	168631



DF46

- Fully automatic
- MAP
- Film winding
- Figure cutting

General Information

Article number	163142
Machine weight	approx. 550 kg
Cassette weight	3 - 5 kg
Electrical data	400 V~, AC- 50/60 Hz
Maximum power consumption	6,3 kW
Lengths of cable / connection plug	- / 3-phase grounded
Pressing force	-
Capacity	2-4 with MAP, 5- 8 without MAP
Start-up heating time	10 min

Trays/Film/Sealing

Maximum sealable tray dimension	360 x 270 x 100 mm (>½ GN)
Maximum film width	446 mm
Sealing temperature	max 200°C
Sealing technique	Automatic
MAP - Modified Atmosphere Packaging	Yes
Vacuum chambers	1
Figure cutting	Yes

Accessories

Spike Roll DF46	167331
High Oxygene Vacuum Pump 40 m³/h	166473
Food Filter DF46	168632
Tray Rails (for two cavities)	164723



THERMO BAGS

- Maintains food temperature
- Can be loaded from the side or from the top
- Can be connected on top of each other with buckles



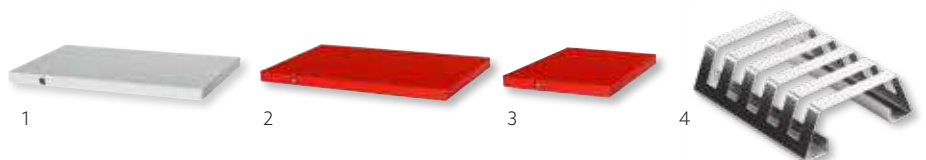
No.	Article	Description	Comp	Benefits	Buckles	Size (mm) LxWxH	Qty/ Cart.
1	163086	Thermo Bag	1	2 ¼ GN Tray	Yes	290x200x100	5x1
2	163085	Thermo Bag	1	Economy 5 ¼ GN Tray	No	275x200x240	5x1
3	163087	Thermo Bag	1	5 ¼ GN Tray	Yes	275x200x240	5x1
4	163088	Thermo Bag	1	Medium	No	310x240x260	5x1
5	163089	Thermo Bag	1	Large	No	420x200x260	5x1



TEMPERATURE CONTROL EQUIPMENT

- For improved temperature control
- Fits into thermo bag lids

No	Article	Decription	Colour	Material	Size LxWxH (mm)	Pack
1	149403	Cooling Plate ¼ GN	White	Aluminium	164x265x15	5x1
2	153490	Heating Plate 1/4 GN	Red	Aluminium	164x265x15	5x1
3	157530	Small Heating Plate	Red	Aluminium	155x155x15	5x1
4	160542	Stand for Heating Plate	-	Aluminium	180x145x52	1x1





THERMO BOXES

- Maintains food temperature
- Washable for easy cleaning



No.	Article	Comp	Description	Material	Benefits	Size (mm) LxWxH	Qty/ Cart.
1	185160	1	Thermo Box	EPP	Single Portion	110x230x325	6x1
2	161169	1	Thermo Box	EPP	¼ GN	660x400x300	1x1
3	161170	1	Thermo Box	EPP	½ GN	450x330x300	1x1
4	113500	3	Thermo Box	EPP	Single Portion	400x325x110	6x1
5	751500	3	Thermo Box	EPP	Single Portion	455x320x105	5x1
6	164669	1	Thermo Box	EPP	Single Portion	325x255x327	1x1



TROLLEYS

No.	Article	Description	Size LxWxH (mm)	Qty/Cart.
1	887100	Trolley Stand	900x650x670	1x1
2	161965	Trolley	600x600x800	1x1
3	887120	Trolley Stand	600x400x800	1x1



WHAT IS A CARBON FOOTPRINT?

Carbon footprint is used to describe the climate impact of a product over its entire life cycle. A calculation is made based on the type of material of the product, the energy used in manufacturing, transport, use phase and end-of-life handling.

The carbon footprint should be used with care since it is a simplified study of a complex reality. It does not describe the problem of plastics in the sea or use of chemicals and is dependent on facts like type of energy used and waste handling infrastructure.

A plant-based product may theoretically reach a zero carbon footprint when only renewable energy is used in the chain. A fossil-based plastic does not have this potential.

PRODUCTS

For packaging material the carbon footprint of the product is consistently lower than for the goods they protect. For plastic products, the transport is typically less than 10-15 % of the overall footprint, also when shipped from China to Europe.

Calculations show that for Duni products for the same use, bagasse and paper products have the lowest carbon footprint.

RESEARCH BASED

There are numerous studies that calculate the carbon footprint according to the ISO standard ISO 14044. There are databases to give the average findings of these studies. The numbers shown are calculated by an environmental consultant, Southpole.

Carbon dioxide emissions from a Duni product life cycle are typically divided into:



Raw materials manufacturing



Manufacturing of finished product

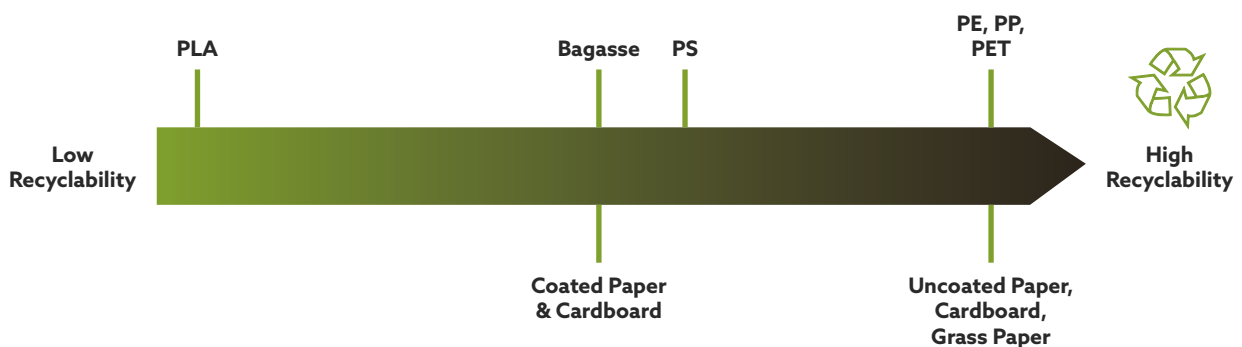


Transport of finished product



Product end-of-life

Recyclability of Duni materials:

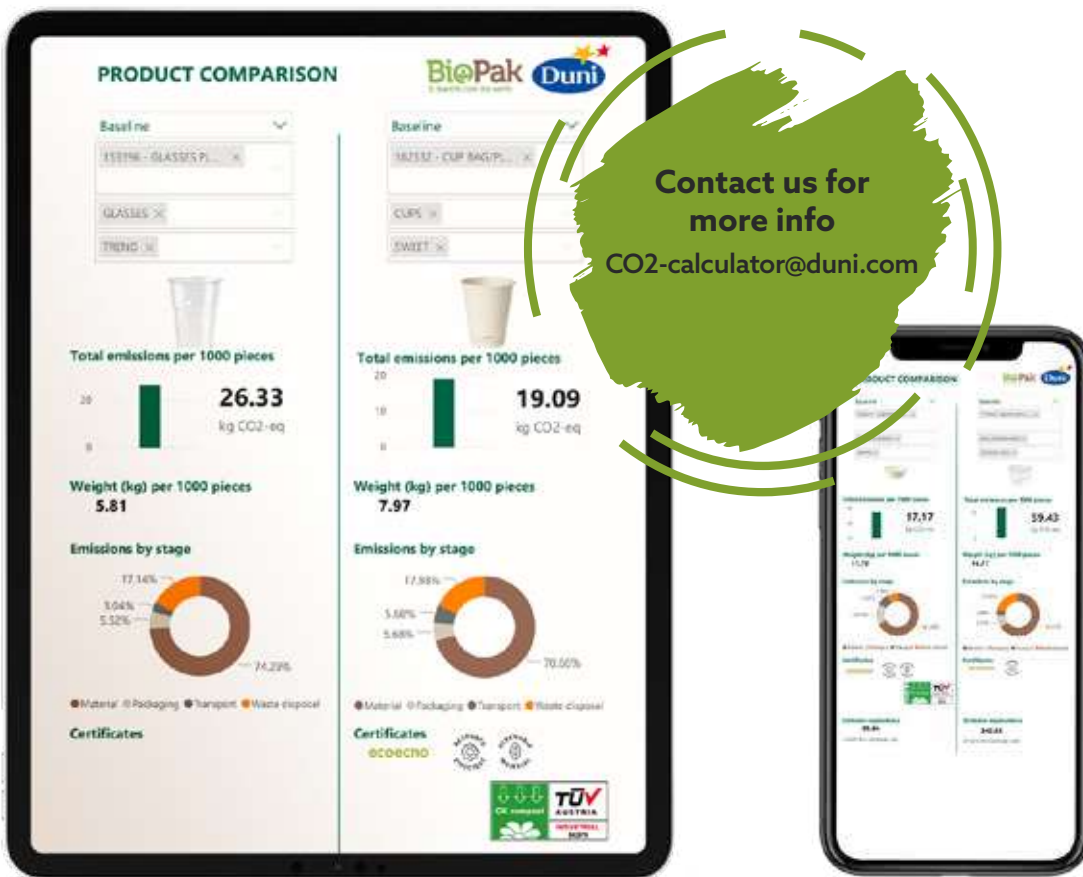


DISCOVER OUR NEW CARBON FOOTPRINT TOOL

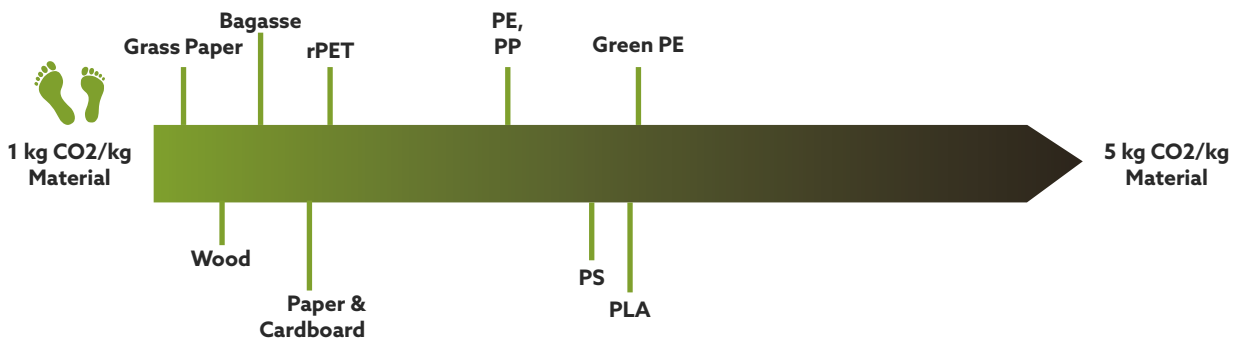
For more than a decade we have been constantly improving our offer of more sustainable packaging, with the goal of lowering our carbon footprint. We are focused on the larger picture of a product’s life cycle. Part of the focus will be on developing the material of the product, plant-based alternatives and resource efficiency, for example. The other part of the focus will be on different end-of-life options, composting is an example when it’s a relevant alternative. We are constantly looking for new ways to improve and innovate the full life cycle of our products so that the beginning and end of the life cycle are in line with more sustainable solutions.

We help you with the calculation of your carbon footprint for your take-away packaging choice, also considering different end-of-life options depending on different recycling streams in your country.

Get in contact with us if you would like help with figures to be used in communication with your customers.



Carbon Footprint of Duni materials:





MATERIALS GUIDE

Different materials suit different needs. This guide will help you to make the right choice for your business.

SYMBOL	NAME	ECOECO®	TEMPERATURE*	DESCRIPTION OF MATERIAL	RECYCLING/DISPOSAL
	Bagasse	ecoeco®	-4°C to +100°C	Sugar cane fiber by-product	Compostable EN13432 or recycle as Carton/Paper
	Bioplastic	ecoeco®	-20°C to +120°C	Bioplastic from sugar and natural waxes	Recycle as Plastics
	CPLA	ecoeco®	-4°C to +100°C	Bioplastic from plant starch, crystalline polylactic acid	Compostable EN13432 (cutlery ASTM D6400 and ASTM D6868) or recycle as Plastics
	Grass Paper	ecoeco®	0°C to +90°C	Mix of locally harvested grass and forest fiber.	Recycle as Paper Packaging
	PBS	ecoeco®	-4°C to +40°C	Virgin plastic, polybutylene succinate	Compostable EN13432 or recycle as Plastics
	PLA	ecoeco®	-4°C to +40°C	Bioplastic from plant starch, polylactic acid	Compostable EN13432 or recycle as Plastics
	RPET	ecoeco®	-40°C to +70°C	Up to 100 % recycled PET, min 20 % virgin plastic	Recycle as Plastics
	ALU	-	-40°C to +250°C	Aluminium	Recycle as Metal
	APET	-	-40°C to +70°C	Virgin plastic, amorphous poly(ethylene terephthalate)	Recycle as Plastics
	Cardboard	-	-20°C to +100°C	Cardboard from forest fiber	Recycle as Paper/Carton
	CPET	-	-40°C to +220°C	Virgin plastic, crystalline poly(ethylene terephthalate)	Recycle as Plastics
	HDPE	-	-4°C to +100°C	Virgin plastic, polyethene	Recycle as Plastics
	LDPE	-	-4°C to +100°C	Virgin plastic, polyethene	Recycle as Plastics
	Mineral plastic	-	-20°C to +120°C	Virgin plastic, polypropene with chalk or talcum	Recycle as Plastics
	PAP (Paper)	-	-20°C to +100°C	Paper from forest fiber	Recycle as Paper/Carton
	PP	-	-20°C to +120°C	Virgin plastic, polypropene	Recycle as Plastics
	PS/EPS	-	-4°C to +100°C	Virgin plastic, polystyrene / expanded polystyrene	Recycle as Plastics

*Check specific temperature and time recommendation in catalogue

THE LIFECYCLE OF A DUNI PRODUCT

The life of a Duni product starts with the choice of material. We prefer renewable raw materials from trees and plants, which are responsibly grown and sourced. Leftover materials such as sugarcane fibres or recycled plastics are also a great way to upcycle and save resources.

Conscious convenience is a good reason to choose and use Duni products. We work hard to ensure good working conditions and limited environmental impact at our own and our suppliers' manufacturing sites.

At the end of their life, Duni products should be recycled, composted or incinerated for energy efficiency. Littering is never an alternative and landfill should be avoided. We strive to enable good waste handling alternatives of our products.



To discover more about **OUR BLUE MISSION**, visit our Corporate Social Responsibility page at Duni.com

SYMBOLS GUIDE



Designed for optimal stackability.



Leak resistant.



Microwave safe.



Lid or sealing film does not mist up.



Hinged lid tears off easily.



Oven safe.



Can be sealed by a Duniform® machine.



Can be customised with a logo, design or message.



Excellent insulation properties.



Made with wood from FSC®-certified forests or post-consumer waste.

The mark of responsible forestry

ecoecho®

Innovative and eco-conscious design – for example made from biodegradable or recycled materials.



SUPPLIER OF GOODFOODMOOD®

FOR MORE IDEAS AND
INFORMATION VISIT DUNI.COM

This catalogue is printed
on FSC®-certified paper.

Duni AB
P O Box 237
SE-201 22 Malmö
+46 40 10 62 00
info@duni.com